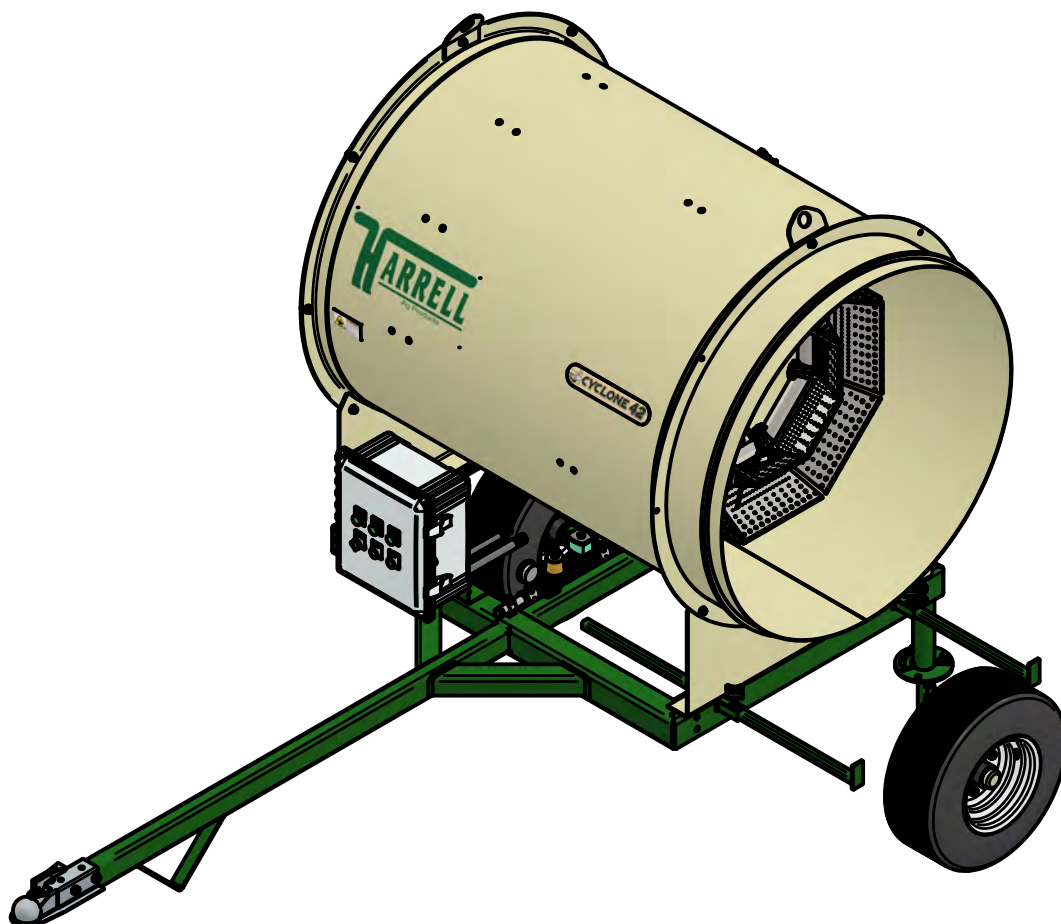




SERIES 03 SEMI DRYER SYSTEM



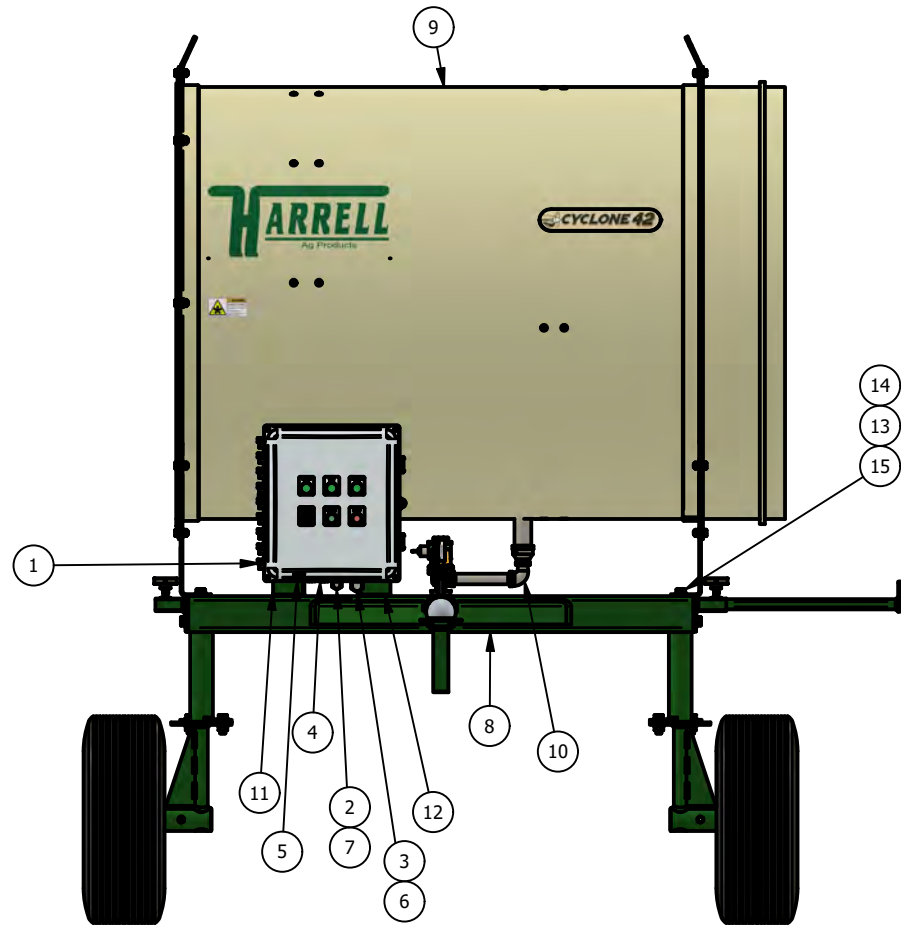
216 INDUSTRIAL BLVD., RAMP 2
BAINBRIDGE, GA 39817
(229) 246-0350
www.harrellag.com

03-PM-001-01

TABLE OF CONTENTS

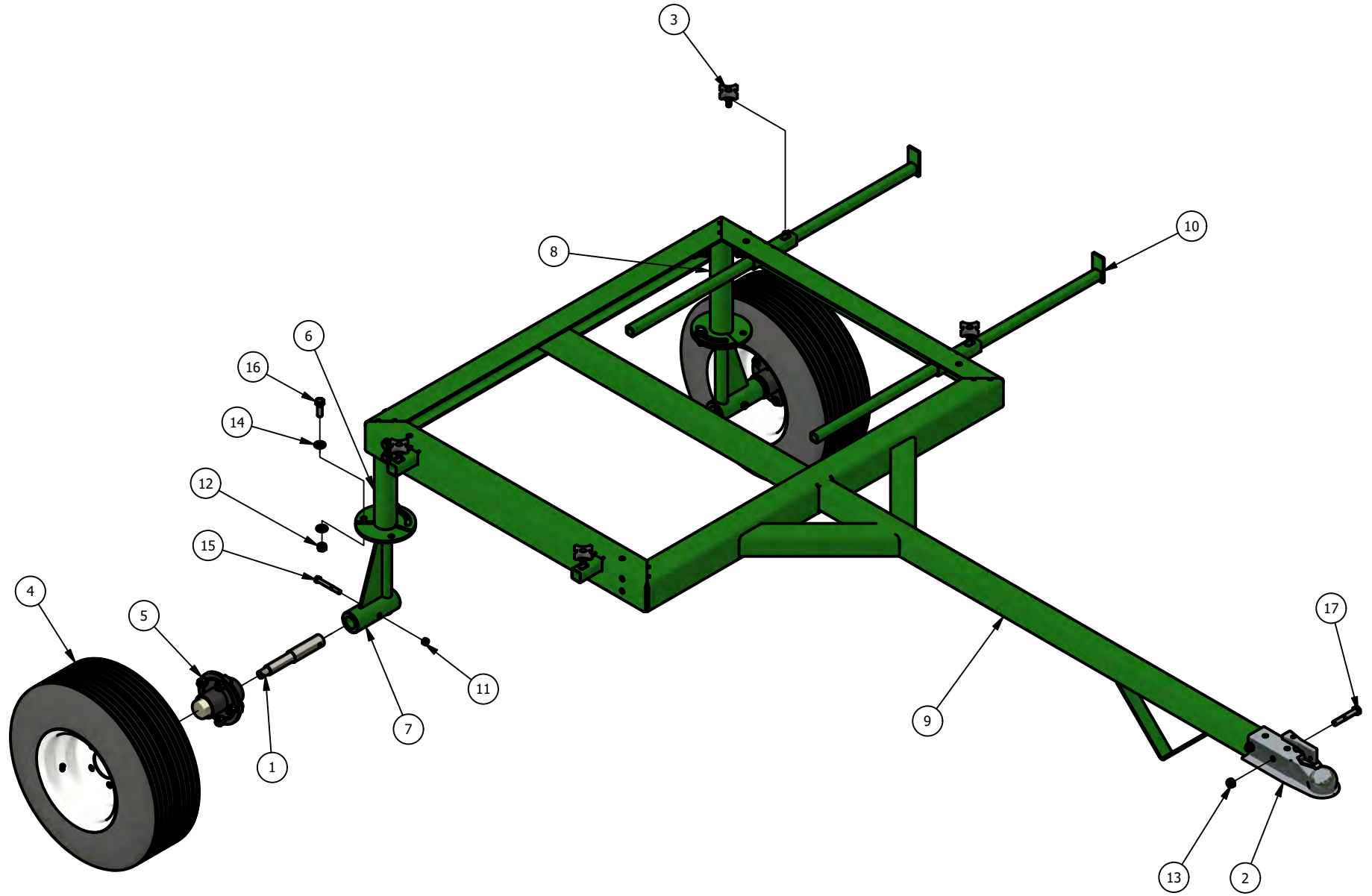
70-001-03.....	CYCLONE 42 PEANUT DRYER w/TRAILER.....	4
84-001-03.....	SEMI DRYER TRAILER.....	6
84-005-03	SEMI DRYER TRANSITION ASSEMBLY.....	8
84-007-03.....	CYCLONE 42 DRYER	10
84-008-03.....	GAS TRAIN ASSEMBLY.....	12
84-009-03.....	HUB ASSEMBLY, 5 BOLT	14
77-005-03.....	480v DRYER CONTROL BOX.....	16

70-001-03
CYCLONE 42 PEANUT DRYER w/TRAILER



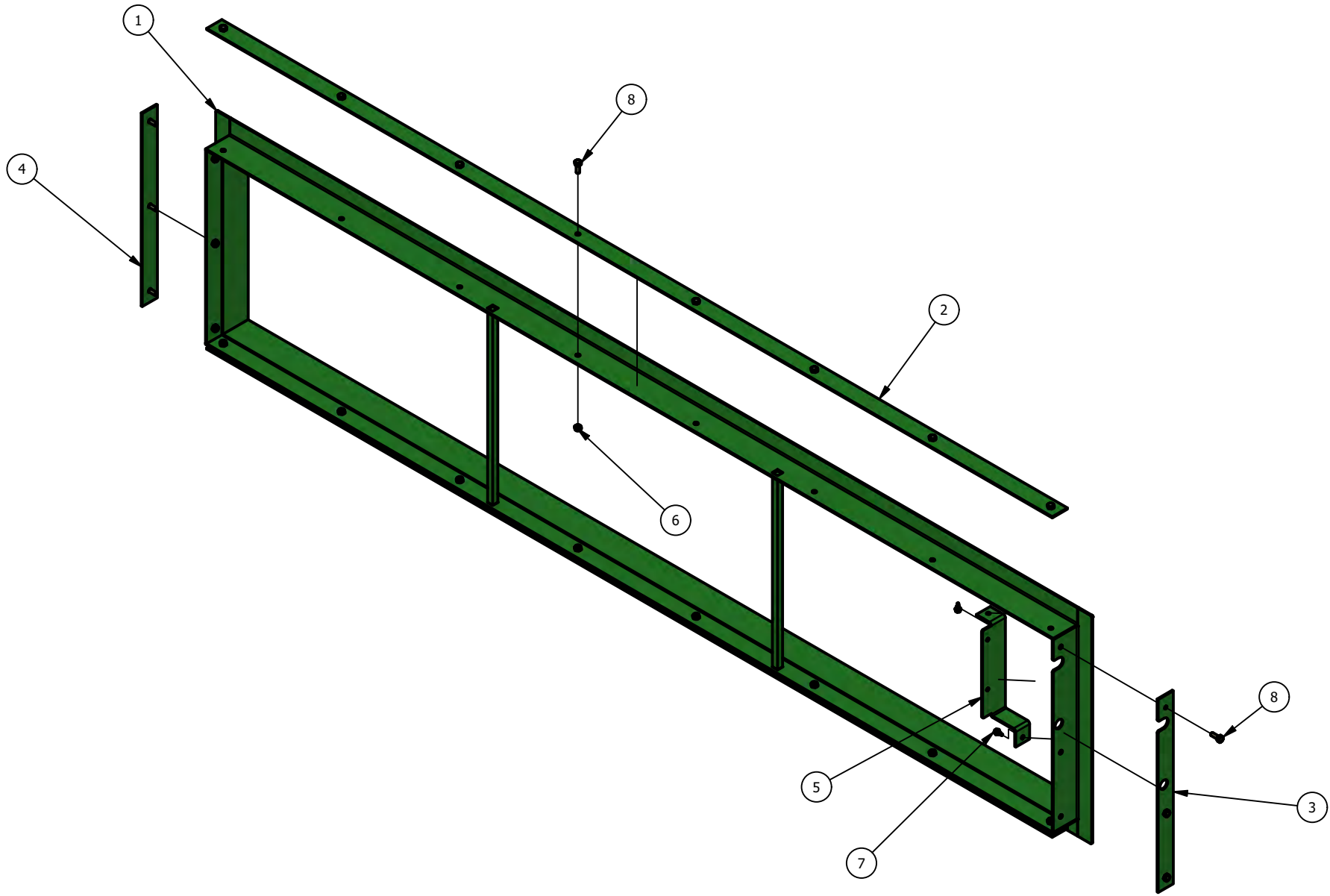
ITEM	ITEM QTY	PART NUMBER	DESCRIPTION
1	1	77-005-03	480V DRYER CONTROL BOX
2	1	77-026-03	FLEXIBLE STEEL CONDUIT 3/4"- GRAY
3	1	77-027-03	FLEXIBLE STEEL CONDUIT 1"- GRAY
4	2	77-029-03	SQUEEZE CLAMP CONNECTOR 3/8"
5	1	77-030-03	SCREW DOWN CORD CLAMP 3/8"
6	1	77-031-03	LIQUIDTIGHT CONNECTOR 3/4-90°
7	1	77-032-03	LIQUIDTIGHT CONNECTOR 1/2-90°
8	1	84-001-03	SEMI DRYER TRAILER
9	1	84-007-03	CYCLONE 42 DRYER
10	1	84-008-03	GAS TRAIN ASSEMBLY
11	1	93-210-03	ELECTRICAL BOX BOUNT RH
12	1	93-211-03	ELECTRICAL BOX BOUNT LH
13	4	0812-1600	HEX NUT, 1/2
14	4	1702-1600	FLAT WASHER, 1/2 ZP
15	4	2816-1610	HEX HEAD BOLT, 1/2 X 1 GR5 ZP

84-001-03 SEMI DRYER TRAILER



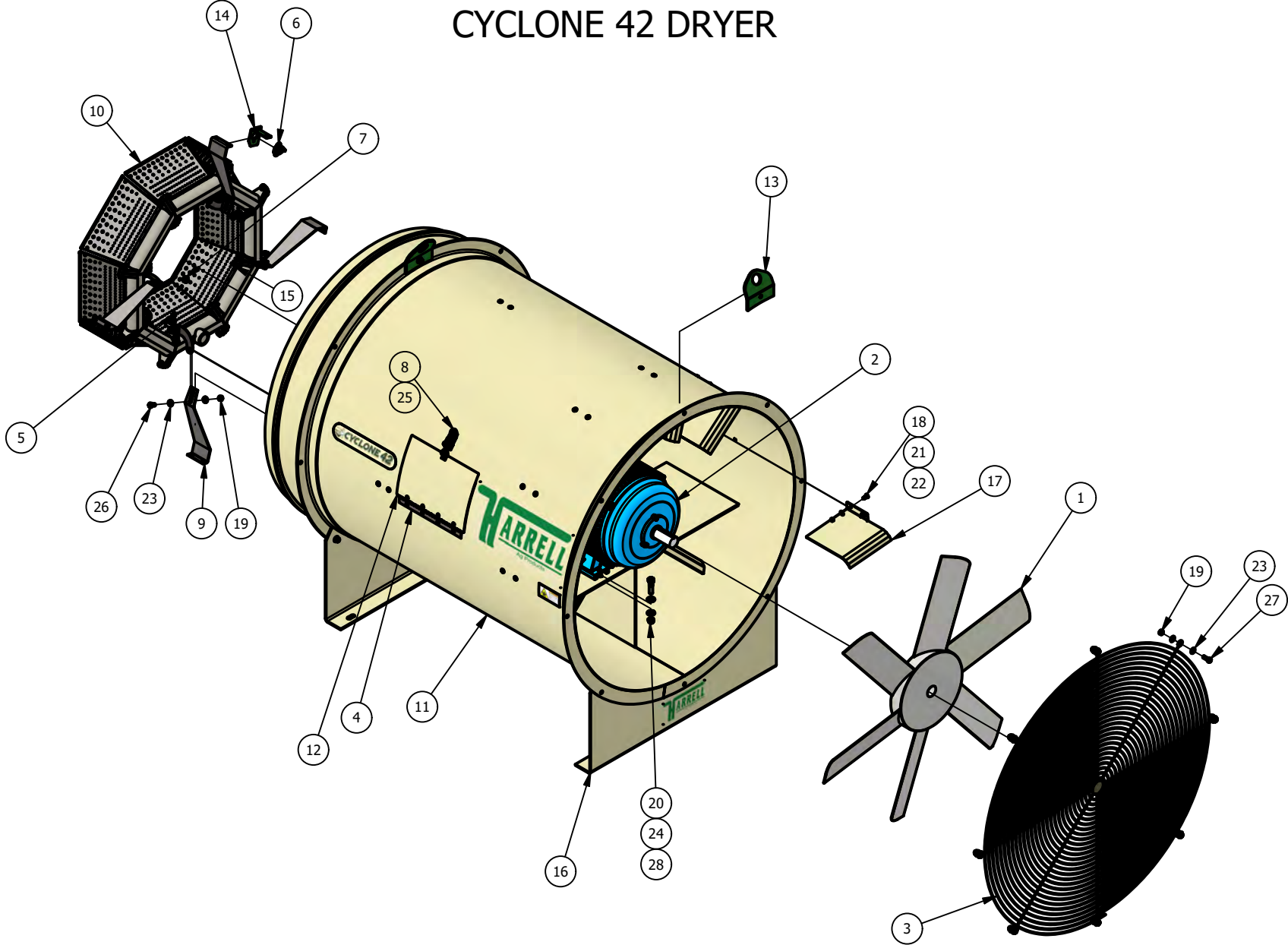
ITEM	ITEM QTY	PART NUMBER	DESCRIPTION
1	2	77-004-36	SPINDLE, 1.25
2	1	77-012-03	HITCH COUPLER, 2" BALL FOR 2" TUBE
3	4	77-103-03	GRIP KNOB, 3/8
4	2	84-001-36	WHEEL, TIRE & VALVE STEM ASSEMBLY
5	2	84-009-03	HUB ASSEMBLY, 5 BOLT DRYER
6	1	85-002-03	WHEEL PIVOT WELDMENT RH
7	2	85-003-03	DRYER SPINDLE SLEEVE WELDMENT
8	1	85-004-03	WHEEL PIVOT WELDMENT LH
9	1	85-006-03	DRYER TRAILER FRAME
10	2	85-014-03	DUCT REST
11	2	0812-1200	HEX NUT, 3/8
12	4	0812-1600	HEX NUT, 1/2
13	10	1412-1600	LOCK NUT, 1/2 STOVER ZP
14	24	1702-1600	FLAT WASHER, 1/2 ZP
15	2	2816-1230	HEX HEAD BOLT, 3/8 X 3 GR5 ZP
16	12	2816-1614	HEX HEAD BOLT, 1/2 X 1 1/2 GR5 ZP
17	2	2816-1630	HEX HEAD BOLT, 1/2 X 3 GR5 ZP

84-005-03
SEMI DRYER TRANSITION ASSEMBLY



ITEM	ITEM QTY	PART NUMBER	DESCRIPTION
1	1	85-101-03	SEMI DRYING TRANSITION
2	2	93-107-03	TRANSITION CURTAIN STRIP TOP/BOTTOM
3	1	93-108-03	TRANSITION CURTAIN STRIP SIDE
4	1	93-110-03	TRANSITION CURTAIN STRIP SIDE
5	1	93-111-03	FARM-O-STAT BRACKET
6	22	1412-0800	LOCK NUT, 1/4 STOVER ZP
7	2	1911-1604	SELF TAP SCREW 1/2-13x1/2
8	22	2814-0806	HEX HEAD BOLT, 1/4 x 3/4 Gr 2 ZP

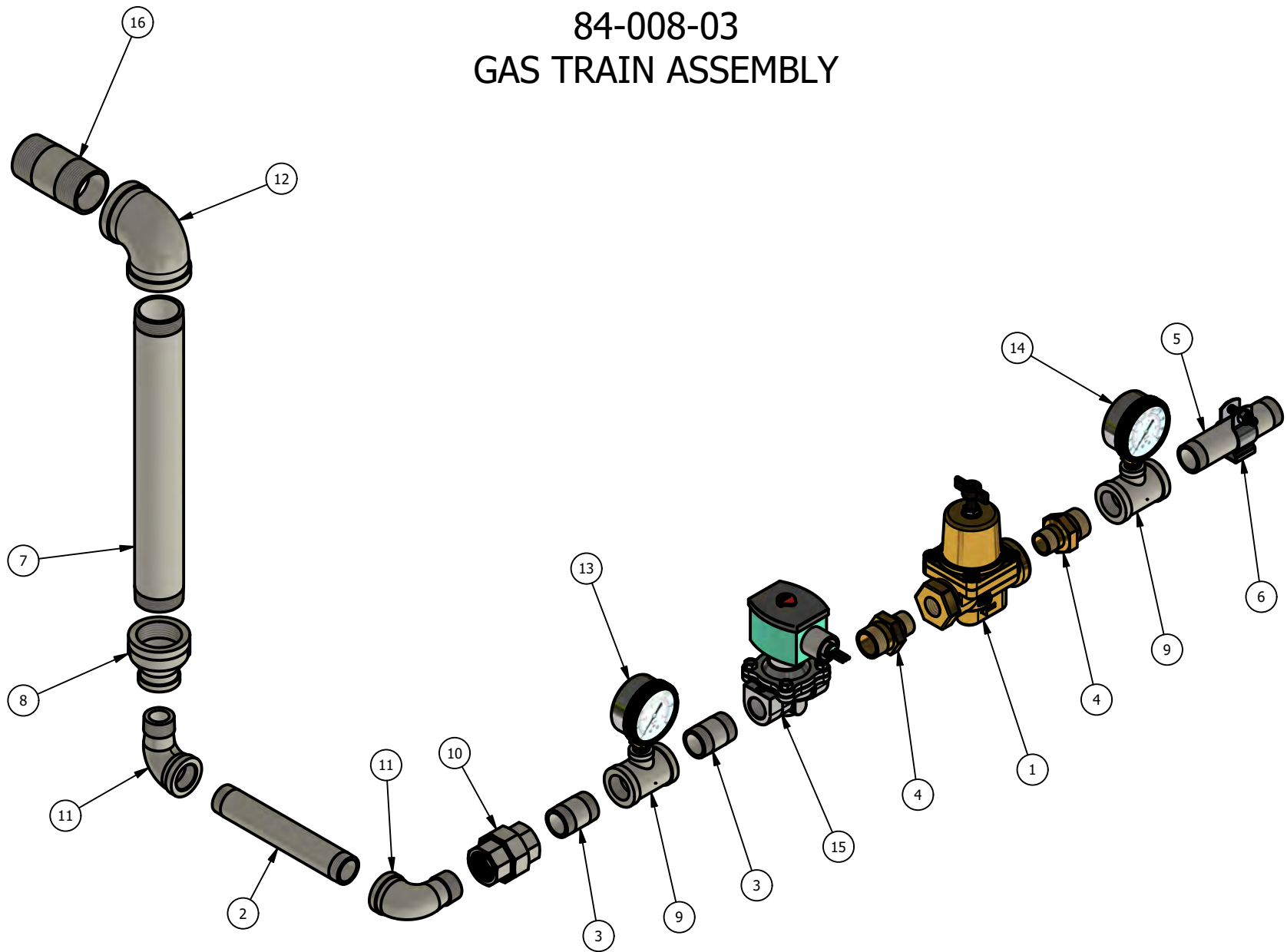
84-007-03
CYCLONE 42 DRYER



03-PM-001-01
10 of 21

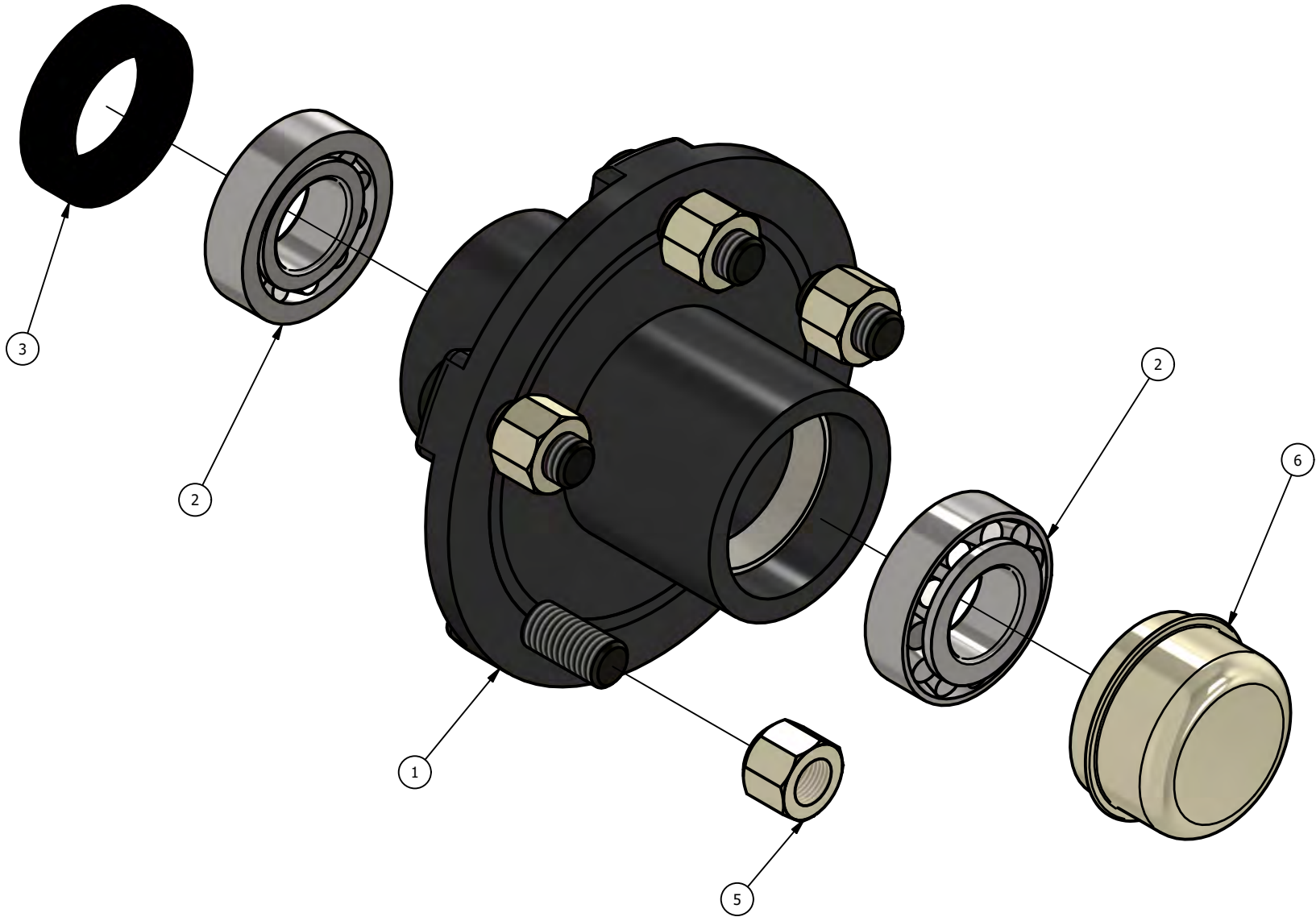
ITEM	ITEM QTY	PART NUMBER	DESCRIPTION
1	1	77-001-03	DRYER FAN (ref)
2	1	77-002-03	25HP MOTOR
3	1	77-007-03	FAN SCREEN 42"
4	1	77-014-03	PIANO HINGE, 12in
5	1	77-022-03	SPARK PLUG
6	1	77-049-03C	HIGH LIMIT SWITCH
7	1	77-076-03C	FLAME PROBE
8	1	77-108-03	DRAW LATCH
9	4	77-488-03	DRYER BURNER LEG
10	1	77-489-03	DRYER BURNER
11	1	85-008-03	DRYER WELDMENT, 42in
12	1	85-203-03	ACCESS DOOR WELDMENT
13	2	93-024-03	DRYER LIFT PLATE
14	1	93-025-03	HIGH LIMIT SWITCH BRACKET
15	3	93-028-03	WIRE GUIDE
16	2	93-206-03	DRYER LEG
17	6	93-208-03	DRYER VANE
18	20	0516-0806	CARRIAGE BOLT, 1/4 x 3/4 Gr5 ZP
19	16	0812-1200	HEX NUT, 3/8
20	4	0912-1600	LOCK NUT, 1/2 NYLOCK ZP
21	20	1412-0800	LOCK NUT, 1/4 STOVER ZP
22	20	1702-0800	FLAT WASHER, 1/4 ZP
23	32	1702-1200	FLAT WASHER, 3/8 ZP
24	8	1702-1600	FLAT WASHER, 1/2 ZP
25	2	1911-1604	SELF TAP SCREW 1/2-13x1/2
26	4	2816-1206	HEX HEAD BOLT, 3/8 X 3/4 GR5 ZP
27	12	2816-1210	HEX HEAD BOLT, 3/8 X 1 GR5 ZP
28	4	2816-1620	HEX HEAD BOLT, 1/2 X 2 GR5 ZP

84-008-03 GAS TRAIN ASSEMBLY



ITEM	ITEM QTY	PART NUMBER	DESCRIPTION
1	1	77-013-03	GAS REGULATOR
2	1	77-502-03	BLACK IRON 3/4x6"
3	2	77-503-03	BLACK IRON 3/4x1-1/2"
4	2	77-504-03	REDUCING HEX NIPPLE 3/4 x 1/2
5	1	77-505-03	BLACK IRON 3/4x4"
6	1	77-506-03	CLAMPING HANGER 3/4"
7	1	77-507-03	BLACK IRON 1-1/4x12"
8	1	77-508-03	REDUCER 1-1/4x3/4
9	2	77-509-03	REDUCING TEE 3/4x3/4x1/2
10	1	77-510-03	PIPE UNION, BLACK IRON 3/4"
11	2	77-511-03	STREET ELBOW, BLACK IRON 3/4" 90°
12	1	77-512-03	ELBOW, BLACK IRON 1-1/4" 90°
13	1	79-515-03	0-30 PSI OIL FILLED GAUGE - 1/4"
14	1	79-516-03	0-100 PSI OIL FILLED GAUGE - 1/4"
15	1	79-1222-03	GAS SOLENOID VALVE
16	1	85-013-03	PIPE, 1-1/4x3 w/ ORIFICE

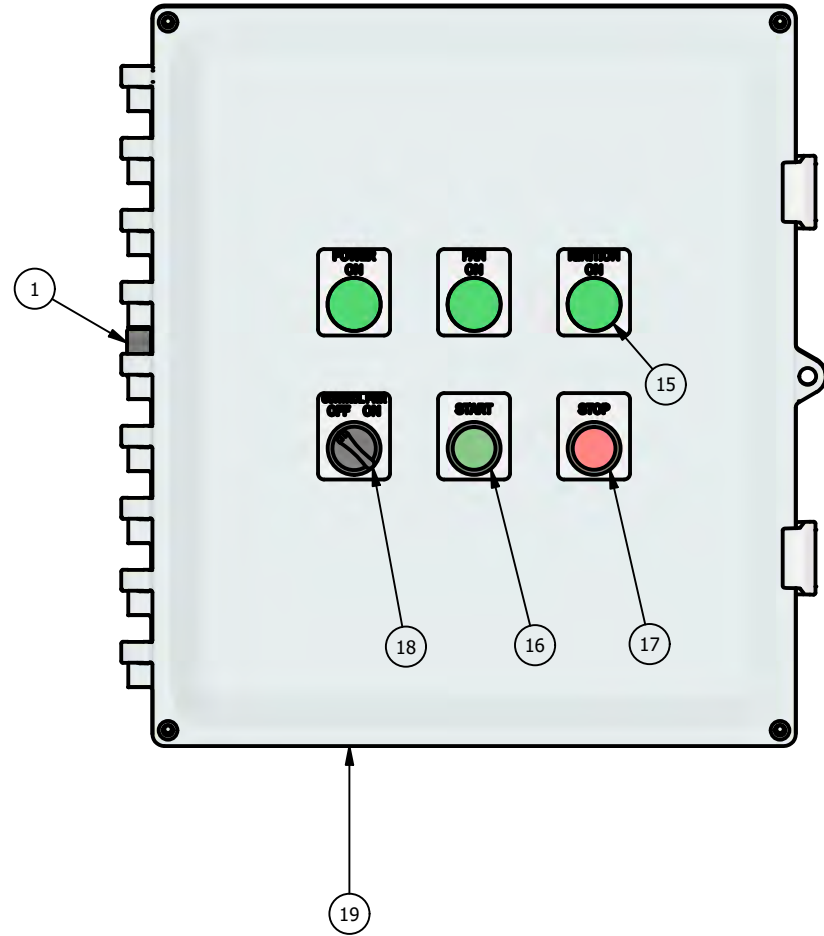
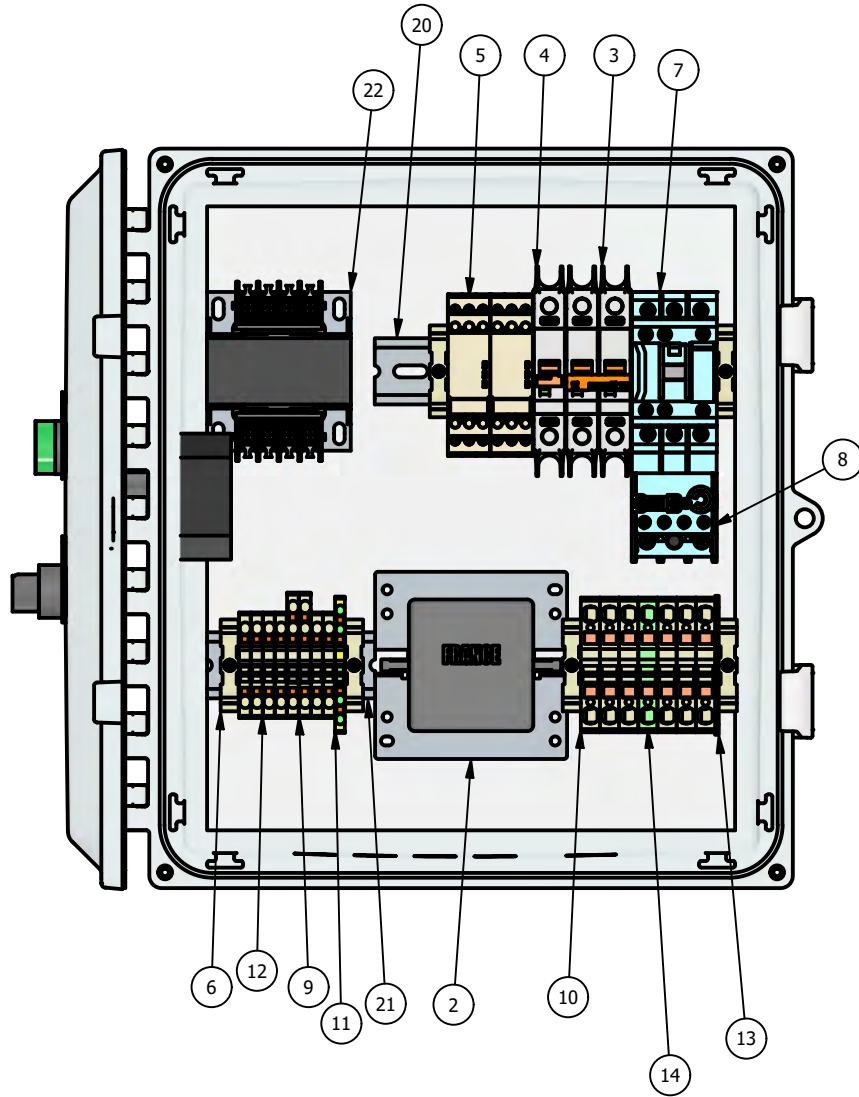
84-009-03
HUB ASSEMBLY, 5 BOLT DRYER





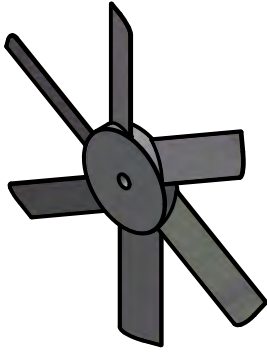
ITEM	ITEM QTY	PART NUMBER	DESCRIPTION
1	1	77-001-36	5 BOLT HUB W/RACES - PICTORIAL
2	2	77-002-36	TAPERED ROLLER BEARING - PICTORIAL
3	1	77-003-36	HUB GREASE SEAL - PICTORIAL
4	5	77-009-36	PRESS FIT LUG STUD, 1/2 X 1-1/4
5	5	77-024-88	1/2" 90° NUT, SAE GRADE 8
6	1	77-113-03	DUST CAP, 5 BOLT HUB

77-005-03 480V DRYER CONTROL BOX

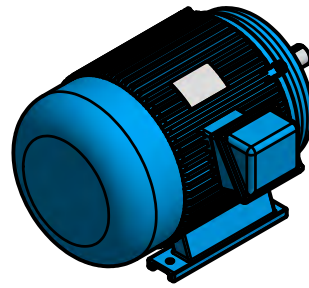


ITEM	ITEM QTY	PART NUMBER	DESCRIPTION
1	1	77-024-03	TIMER SPRINGWOUND 12 HR W/ HOLD
2	1	77-057-03C-F	120-6,000 VOLT IGNITION TRANSFORMER(FRANCE)
3	1	79-200-03	BREAKER, CIRCUIT, 5A, 2 POLE
4	1	79-201-03	BREAKER, CIRCUIT, 1A,1 POLE
5	2	79-202-03	TIMER, ON DELAY
6	6	79-203-03	END BRACKET, GREY, SCREW DOWN
7	1	79-204-03	WEG ELECTRIC CWB SERIES IEC CONTACTOR
8	1	79-205-03	WEG ELECTRIC THERMAL OVERLOAD RELAY
9	2	79-206-03	TERMINAL BLOCK, FEED THROUGH, PUSH IN, 600V, 20A, 3POS, 26-12AWG, GREY
10	6	79-207-03	TERMINAL BLOCK, FEED THROUGH, PUSH IN, 600V, 60A, 2POS, 20-6AWG, GREY
11	1	79-208-03	TERMINAL BLOCK, FEED THROUGH, PUSH IN, 600V, 4POS, 26-12AWG,GND, GN/YL
12	6	79-209-03	TERMINAL BLOCK, FEED THROUGH, PUSH IN, 600V, 20A, 2POS, 26-12AWG, GREY
13	1	79-211-03	END PLATE, GREY, FOR DP10
14	1	79-212-03	TERMINAL BLOCK, FEED THROUGH, PUSH IN, 600V, 2POS, 20-6AWG, GND, GN/YL
15	3	79-213-03	INDICATOR, GREEN, PLASTIC OPERATOR, 22MM
16	1	79-214-03	PUSH BUTTON, NON-ILLUM., FLUSH, MOMENTARY, GREEN, IP66,
17	1	79-215-03	PUSH BUTTON, NON-ILLUM., FLUSH, MOMENTARY, RED, IP66,
18	1	79-216-03	SWITCH, SELECTOR, 2 POSITION, NON-ILLUM., PLASTIC, BLACK, 90 DEG.
19	1	79-220-03	ELECTRICAL BOX
20	1	79-223-03	DIN RAIL, TOP
21	2	79-224-03	DIN RAIL, BOTTOM
22	1	79-1223-03	STEP DOWN TRANSFORMER, SP100MQMJ

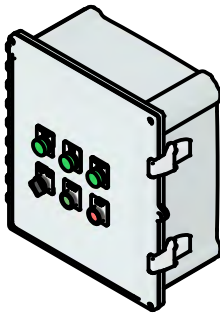
77-001-03
DRYER FAN (ref)



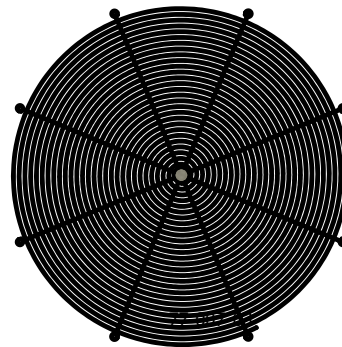
77-002-03
25HP MOTOR



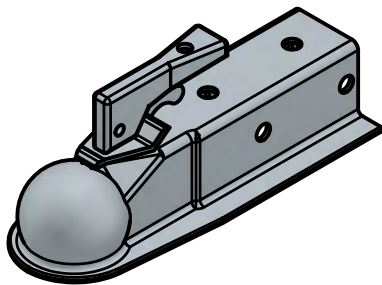
77-005-03
480V DRYER CONTROL BOX



77-007-03
FAN SCREEN 42"



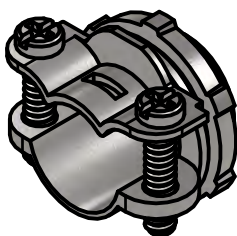
77-012-03
HITCH COUPLER, 2" BALL FOR 2" TUBE



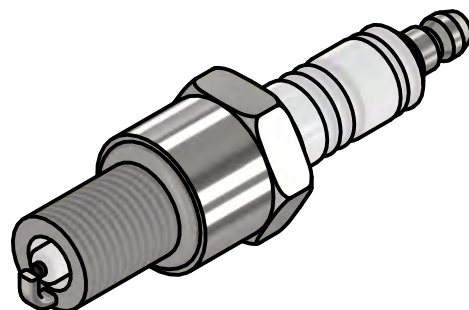
77-019-03
FAN BLADE WARNING



77-020-03
CLAMP CONNECTOR 3/8"



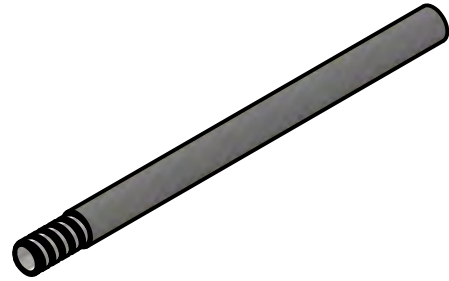
77-022-03
SPARK PLUG



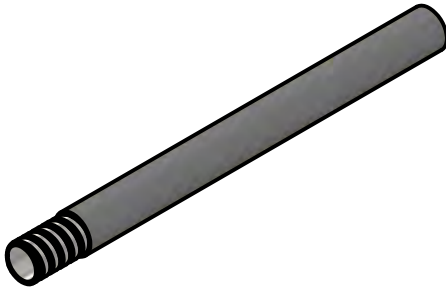
77-024-03
TIMER SPRINGWOUND 12 HR W/HOLD, 125-277V



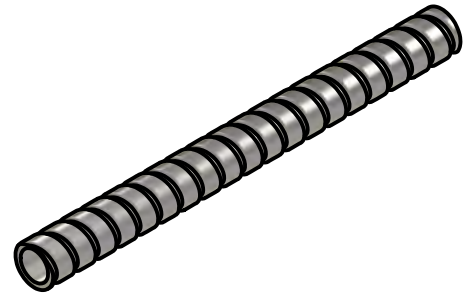
77-026-03
FLEXIBLE STEEL CONDUIT 3/4"- GRAY



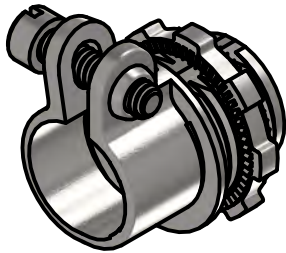
77-027-03
FLEXIBLE STEEL CONDUIT 1"- GRAY



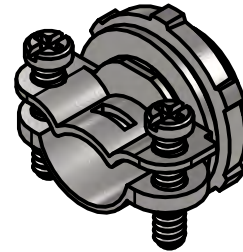
77-028-03
FLEXIBLE STEEL CONDUIT, 3/4" UNCOATED



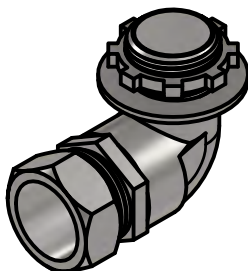
77-029-03
SQUEEZE CLAMP CONNECTOR 3/8"



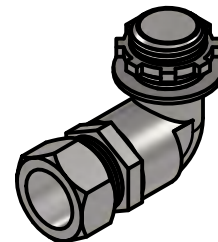
77-030-03
SCREW DOWN CORD CLAMP 3/8"



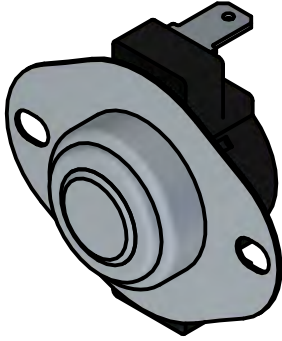
77-031-03
LIQUIDTIGHT CONNECTOR 3/4-90°



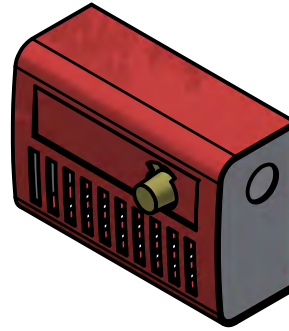
77-032-03
LIQUIDTIGHT CONNECTOR 1/2-90°



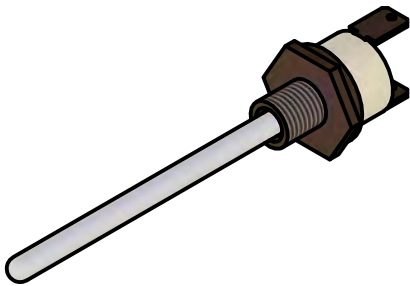
77-049-03C
HIGH LIMIT SWITCH



77-054-03
DRYER THERMOSTAT, HONEYWELL



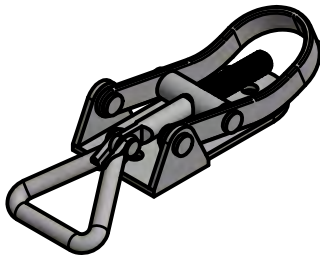
77-076-03C
FLAME PROBE



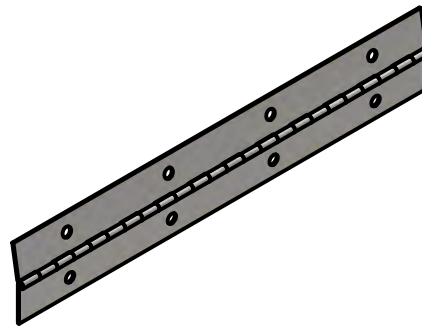
77-103-03
GRIP KNOB, 3/8



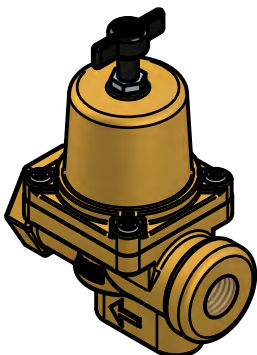
77-108-03
DRAW LATCH



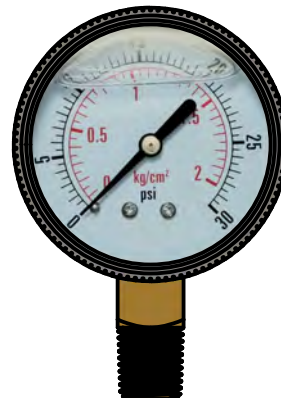
77-014-03
PIANO HINGE, 12in



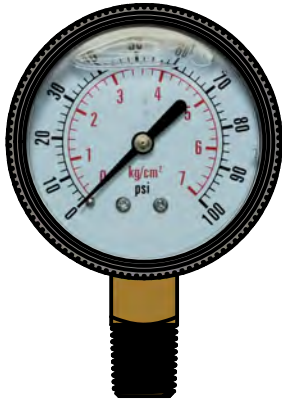
77-013-03
GAS REGULATOR



79-515-03
0-30 PSI OIL FILLED GAUGE - 1/4"



79-516-03
0-100 PSI OIL FILLED GAUGE - 1/4"



79-1222-03
GAS SOLENOID VALVE

