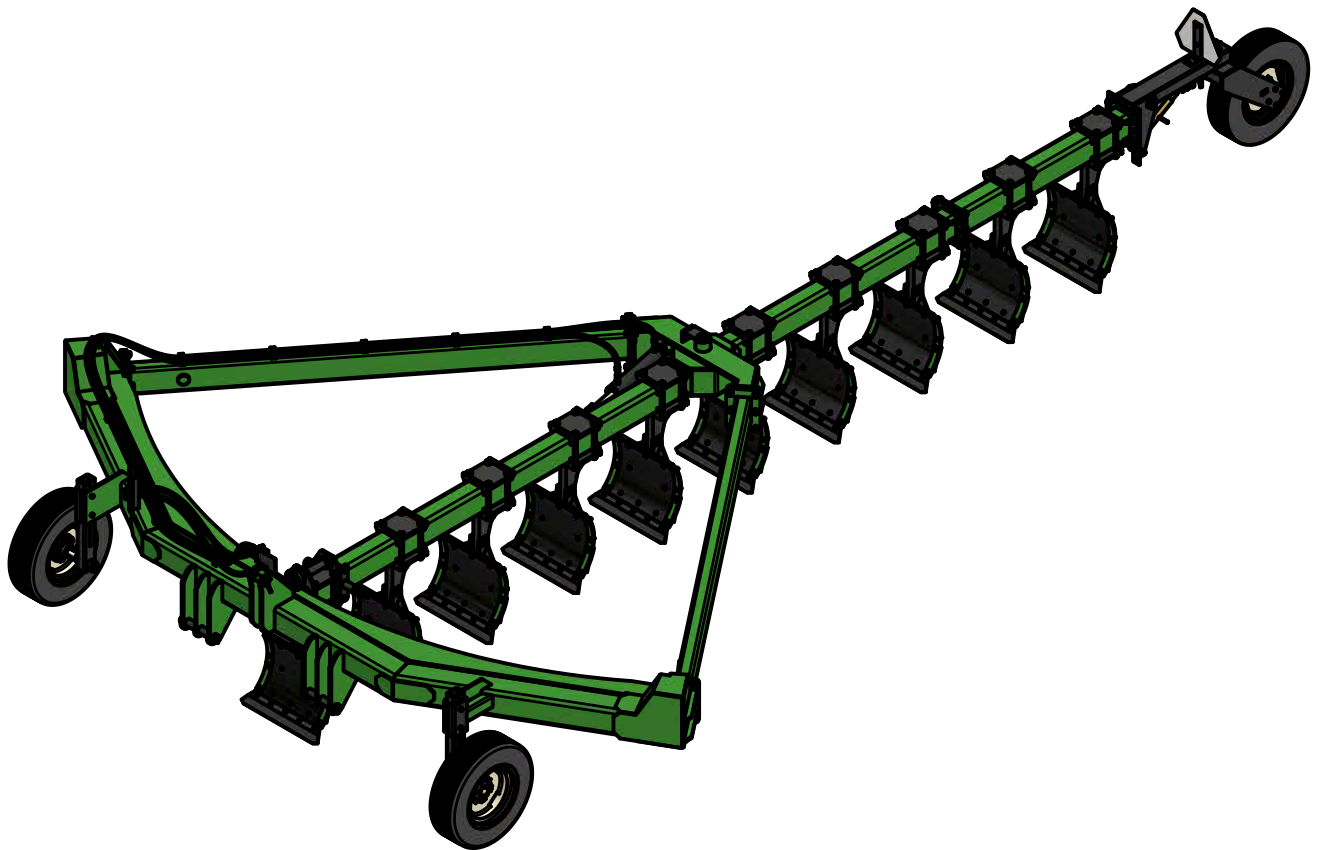




6710 SUPER HD PLOW

Parts Manual

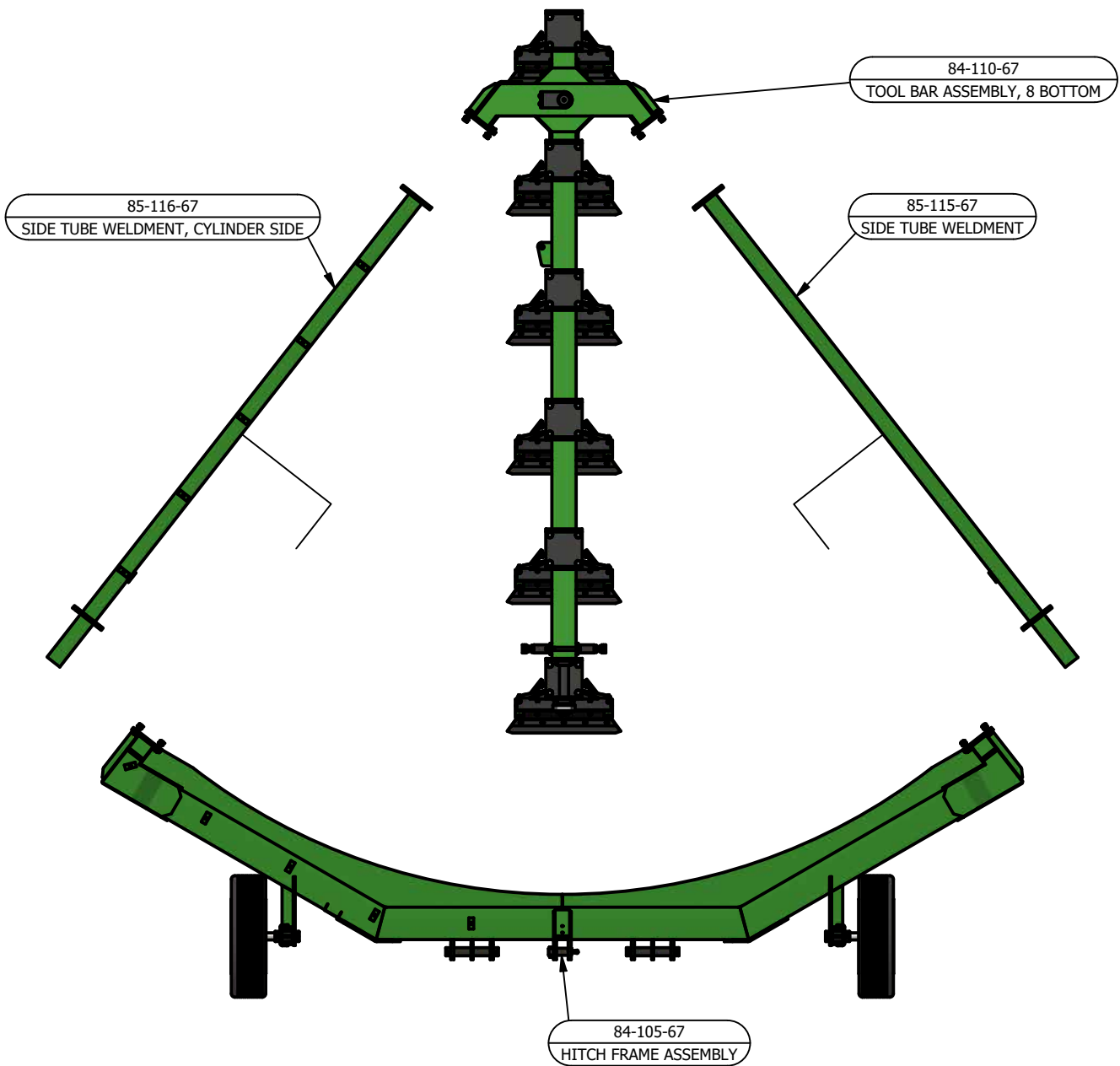


216 INDUSTRIAL BLVD., RAMP 2
BAINBRIDGE, GA 39817
(229) 246-0350
www.harrellag.com

67-PM-001-01

TABLE OF CONTENTS

.....	FIELD ASSEMBLY INSTRUCTIONS.....	4
70-001-67.....	6710 - SUPER HD PLOW.....	6
84-102-67.....	MAIN FRAME ASSEMBLY.....	8
83-100-67.....	6700 PLOW HYDRAULIC KIT.....	10
84-100-67.....	10 BOTTOM TOOLBAR PIVOT ASSEMBLY.....	12
84-110-67.....	8 BOTTOM TOOLBAR ASSEMBLY.....	14
84-105-67.....	HITCH FRAME ASSEMBLY.....	16
84-109-67.....	FRONT GAUGE WHEEL ASSEMBLY.....	18
84-106-67.....	TIRE/WHEEL - HUB/SPINDLE ASSEMBLY.....	20
84-108-67.....	HUB/SPINDLE ASSEMBLY.....	22
84-112-67.....	2 BOTTOM EXTENSION.....	24
83-004-63.....	REAR GAUGE WHEEL BUNDLE.....	26
84-1000-63.....	REAR GAUGE WHEEL ASSEMBLY.....	28
72-001-67.....	FRONT BOTTOM KIT.....	30
72-002-67.....	FORWARD INTERMEDIATE BOTTOM KIT.....	32
72-005-67.....	FORWARD REAR BOTTOM KIT.....	34
84-113-67.....	ADJUSTABLE STOP ASSEMBLY.....	36
84-514-36.....	TOOL BAR PIVOT ROLLER ASSEMBLY.....	38
83-003-36.....	MOLD BOARD ASSEMBLY.....	40
84-1007-63.....	FRONT SHANK ASSEMBLY.....	42
MISC PARTS.....	44



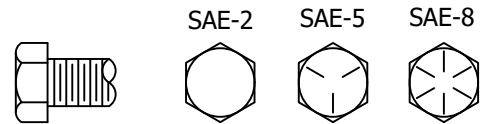
Connect your tractor to the Hitch Frame Assembly of the 6700 plow. Ensure that all pins are inserted and secured for proper safety. Loose-bolt the plow sides to the hitch frame. The hydraulic hose mount brackets should be on the curb side, facing up. Once you have both sides loose-bolted, back up to the 10 Bottom Pivot Assembly and loose-bolt to the Plow Sides. Once all connections have been made, torque to specs (pg.5). Connect hydraulic hoses to tractor.

CHECKING BOLT TORQUE

The table shown below gives correct torque values for various bolts and capscrews. Tighten all bolts to the torques specified in chart unless otherwise noted. Check tightness of bolts periodically using bolt torque chart as a guide. noted. Check tightness of bolts periodically using bolt torque chart as a guide. Replace hardware with the same strength bolt.

U.S. MEASUREMENT

BOLT DIAMETER "A"	Bolt Torque in N-M (ft-lb)		
	SAE2	SAE5	SAE8
1/4	NOT USED	14 (10)	19 (14)
5/16	NOT USED	27 (20)	41 (30)
3/8	31 (23)	47 (35)	68 (50)
7/16	47 (35)	75 (55)	108 (80)
1/4	75 (55)	115 (85)	163 (120)
9/16	102 (75)	176 (130)	237 (175)
5/8	142 (105)	231 (170)	325 (240)
3/4	217 (160)	407 (300)	576 (425)
7/8	251 (185)	603 (445)	929 (685)
1	339 (250)	910 (670)	1396 (1030)
1-1/4	450 (330)	1235 (910)	1979 (1460)



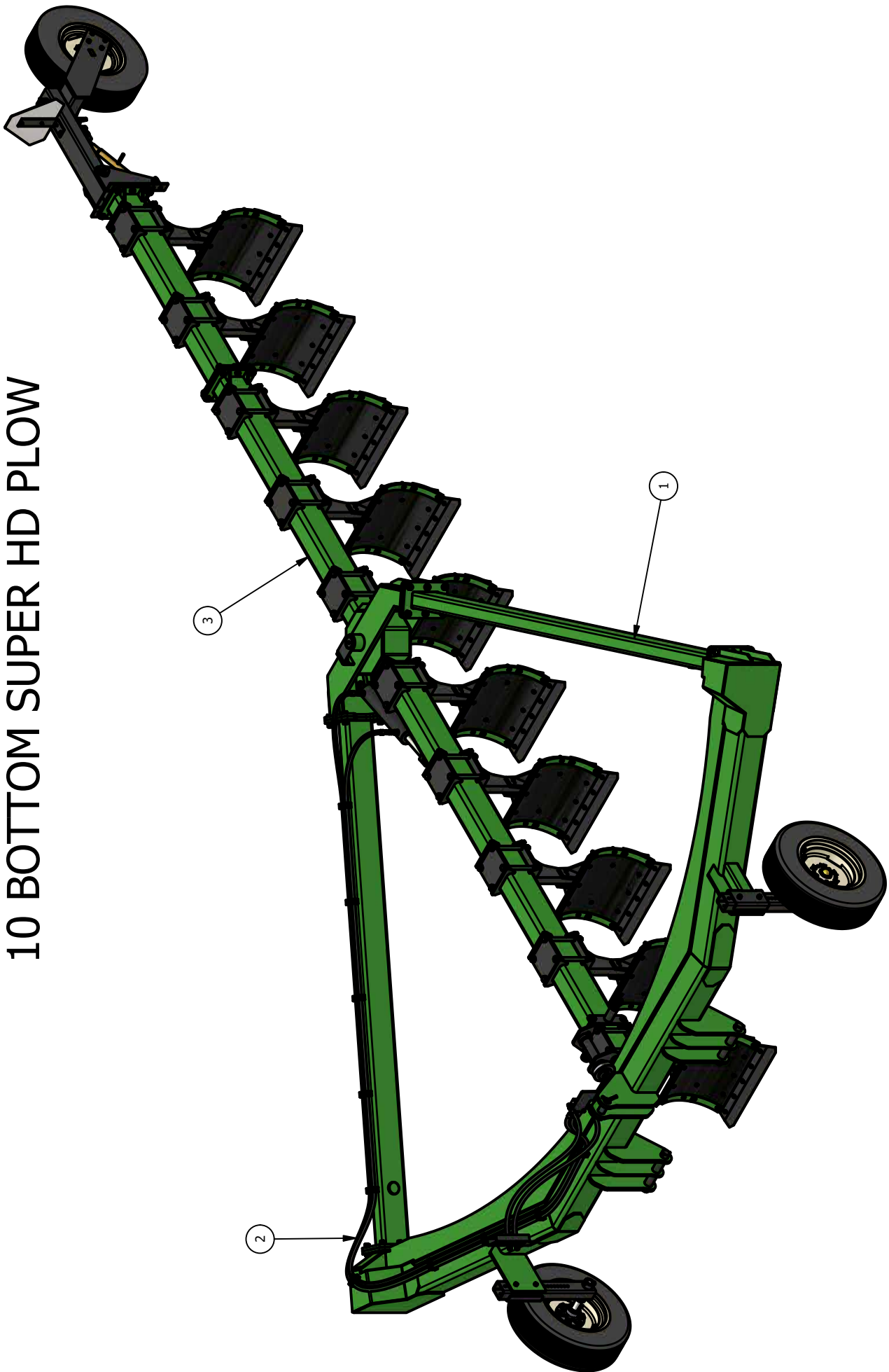
METRIC MEASUREMENT

BOLT DIAMETER "A"	Bolt Torque in N-M (ft-lb)	
	8.8	10.9
5mm	6 (5)	9 (7)
6mm	11 (9)	17 (13)
8mm	28 (20)	40 (30)
10mm	55 (40)	80 (59)
12mm	95 (70)	140 (103)
16mm	235 (173)	350 (258)
20mm	475 (350)	675 (498)
24mm	825 (608)	1170 (863)
30mm	1630 (1201)	2320 (1712)



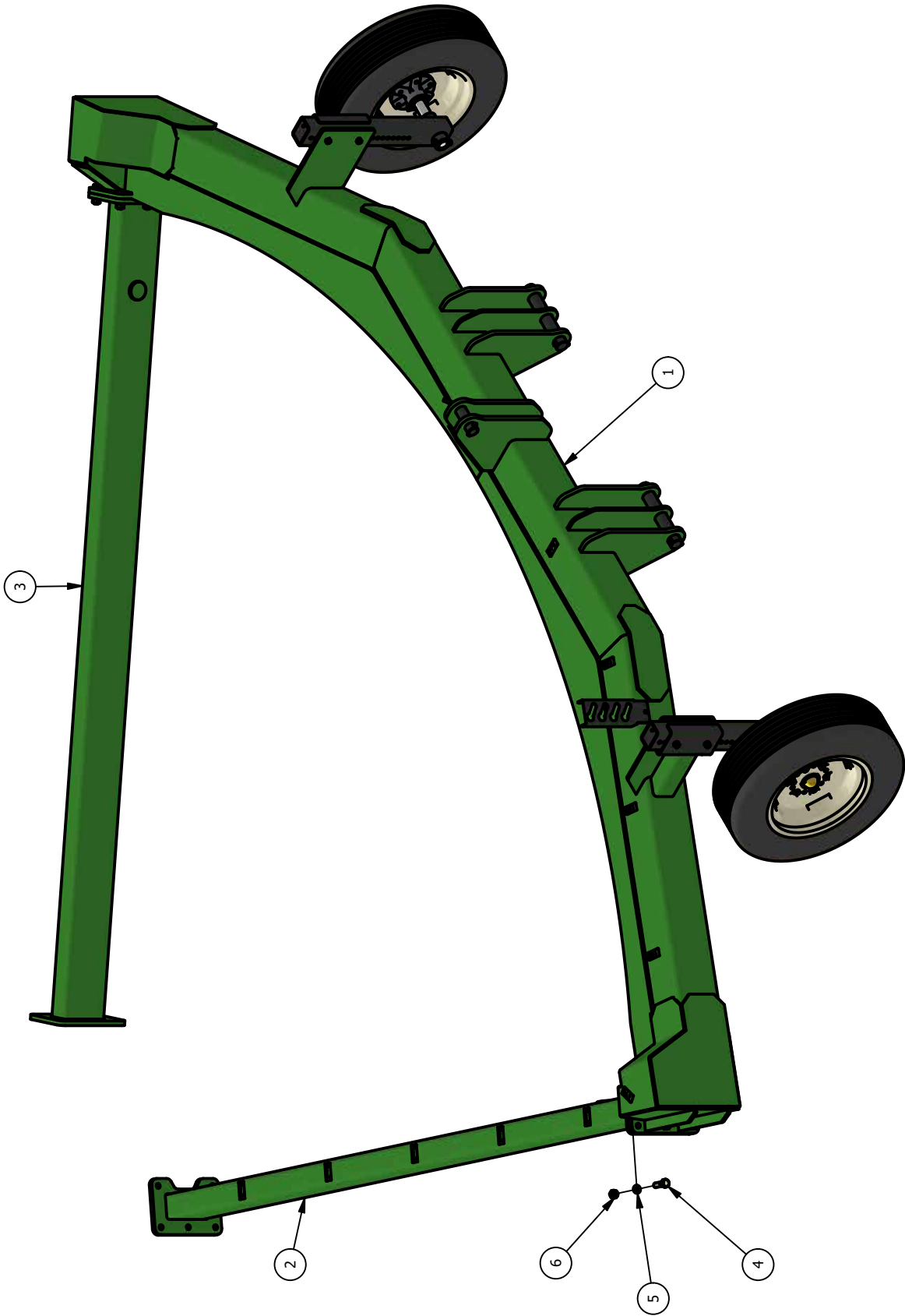
NOTE: Bolts having locknuts with plated and wax finish should be tightened to approximately 50 percent of amounts shown in chart.

70-001-67
10 BOTTOM SUPER HD PLOW



ITEM	ITEM QTY	PART NUMBER	DESCRIPTION
1	1	84-102-67	MAIN FRAME ASSEMBLY
2	1	83-100-67	6700 PLOW HYDRAULIC KIT
3	1	84-100-67	6700 SUPER HD 10 BOTTOM PIVOT ASM

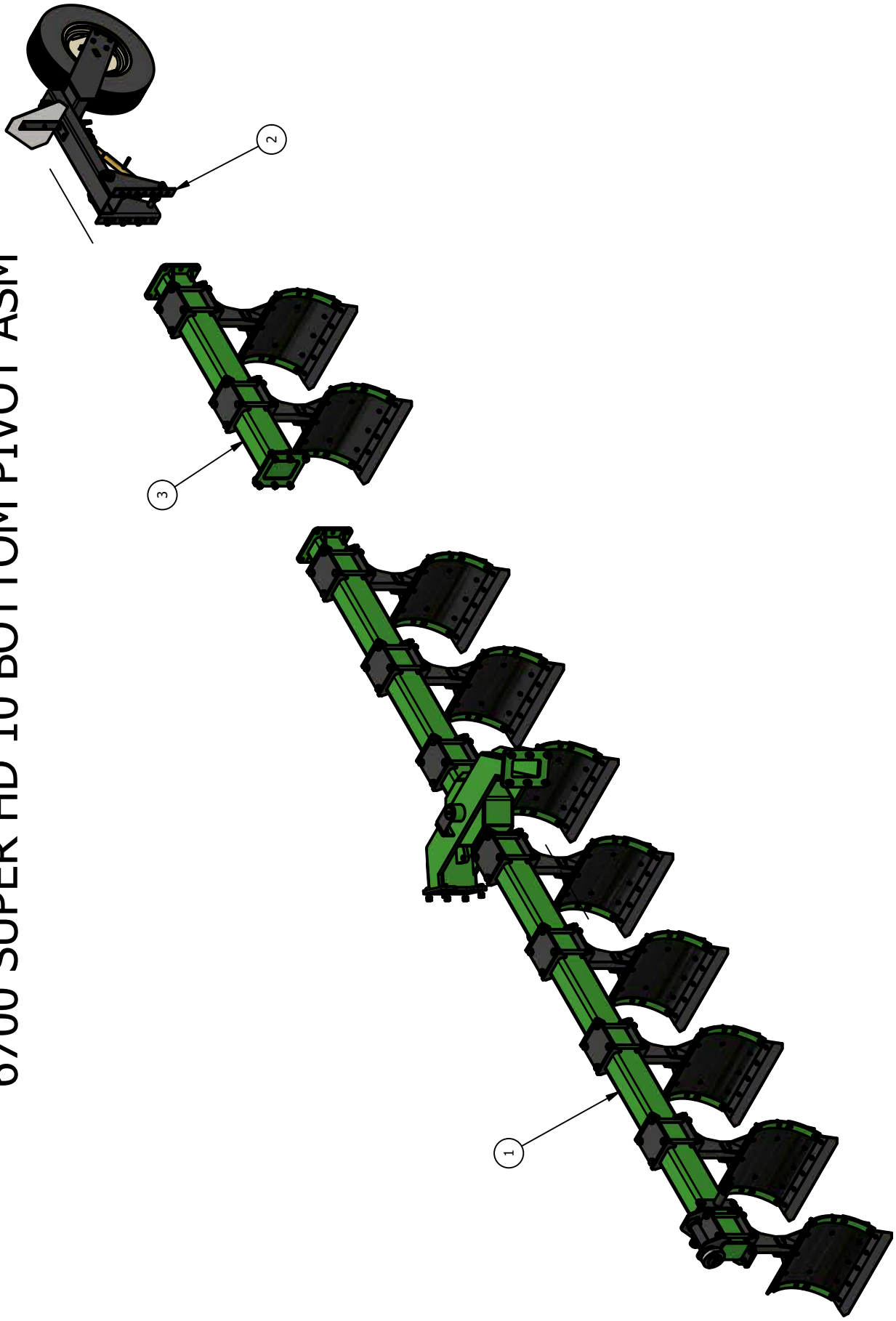
84-102-67
MAIN FRAME ASSEMBLY



ITEM	ITEM QTY	PART NUMBER	DESCRIPTION
1	1	84-105-67	HITCH FRAME ASSEMBLY
3	1	85-115-67	SIDE TUBE WELDMENT
4	1	85-116-67	SIDE TUBE WELDMENT, CYLINDER SIDE
7	12	0812-2400	HEX NUT, 3/4
6	12	1602-2400	LOCK WASHER, 3/4 ZP
8	12	2818-2424	HEX HEAD BOLT, 3/4 X 2 1/2 GR8

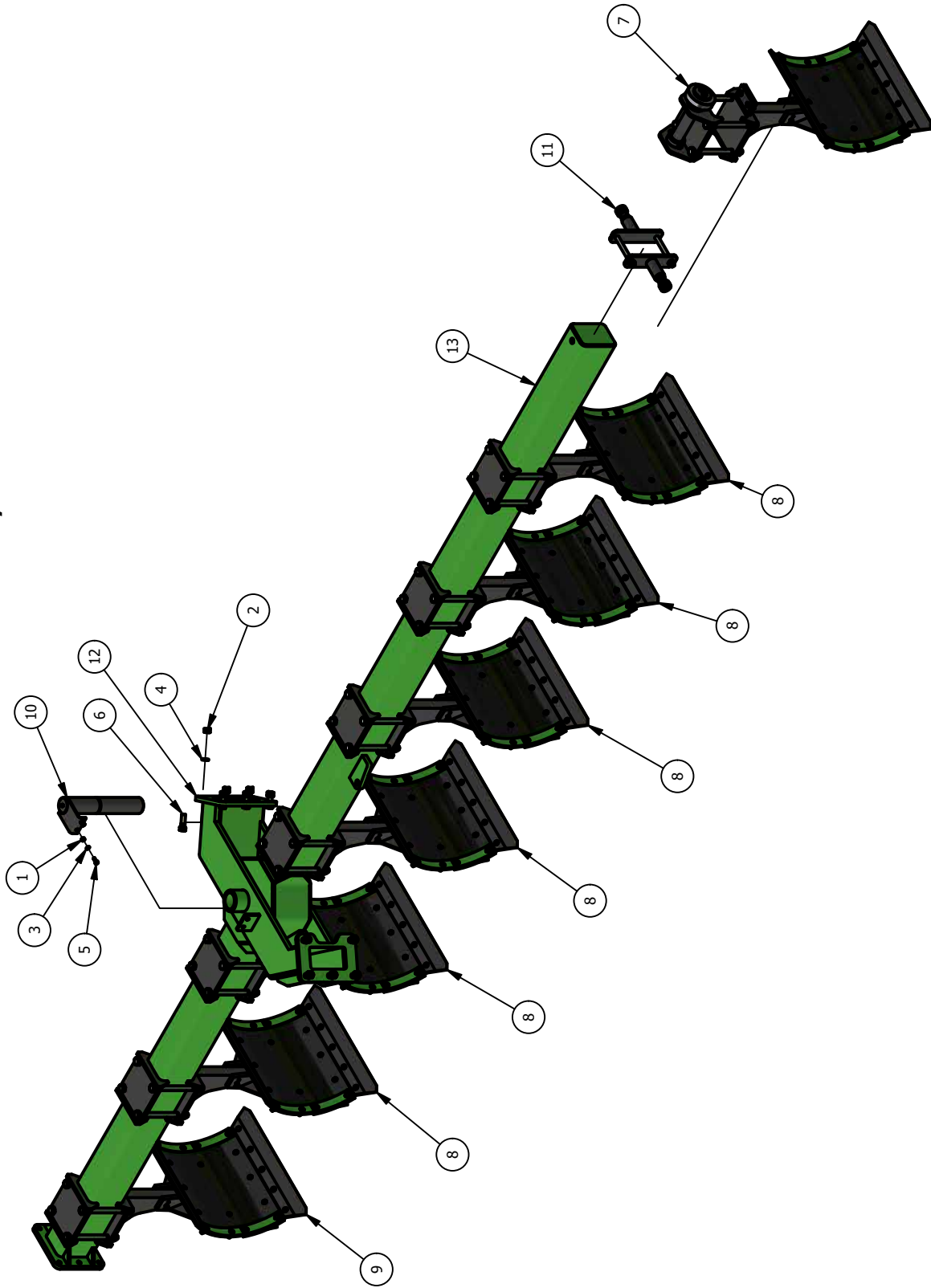
ITEM	ITEM QTY	PART NUMBER	DESCRIPTION
1	4	1412-1200	LOCK NUT, 3/8 STOVER ZP
2	2	2816-1210	HEX HEAD BOLT, 3/8 X 1 GR5 ZP
3	2	2816-1220	HEX HEAD BOLT, 3/8 X 2 GR5 ZP
4	2	77-003-75	MALE CONNECTOR STRAIGHT, 3/8-1/2
5	6	77-050-55	HYD HOSE END FEMALE SWIVEL 3/8"X#6 JIC
6	2	77-051-55	HYD HOSE END MALE STRAIGHT 3/8" X 1/2" MP
18	1	78-288-67	HYD HOSE, RETRACT, 288"
17	1	78-301-67	HYD HOSE, EXTEND, 301.5"
9	20	79-002-36	TWIN HOSE CLAMP, 3/4"
10	2	79-006-06	CLEVIS PIN - 1" DIA. X 3-1/4"
19	2	79-011-63	HYD HOSE, 66"
12	4	79-043-06	1/8" HAIR PIN
13	1	79-100-67	CYLINDER
14	1	79-205-28	3/8 MALE - FEMALE INLINE SWIVEL
15	2	79-482-36	QUICK-CONNECT
16	10	79-496-50	TWIN CLAMP ASSEMBLY BOLT 3/8"X1-3/4" BRASS
17	10	79-497-50	TWIN CLAMP, LARGE TOP
18	1	84-1011-63	COUNTER BALANCE VALVE KIT FOR 8 - BOTTOM FLOW
19	1	98-049-36	COUNTER BALANCE VALVE MOUNTING BRACKET

84-100-67
6700 SUPER HD 10 BOTTOM PIVOT ASM



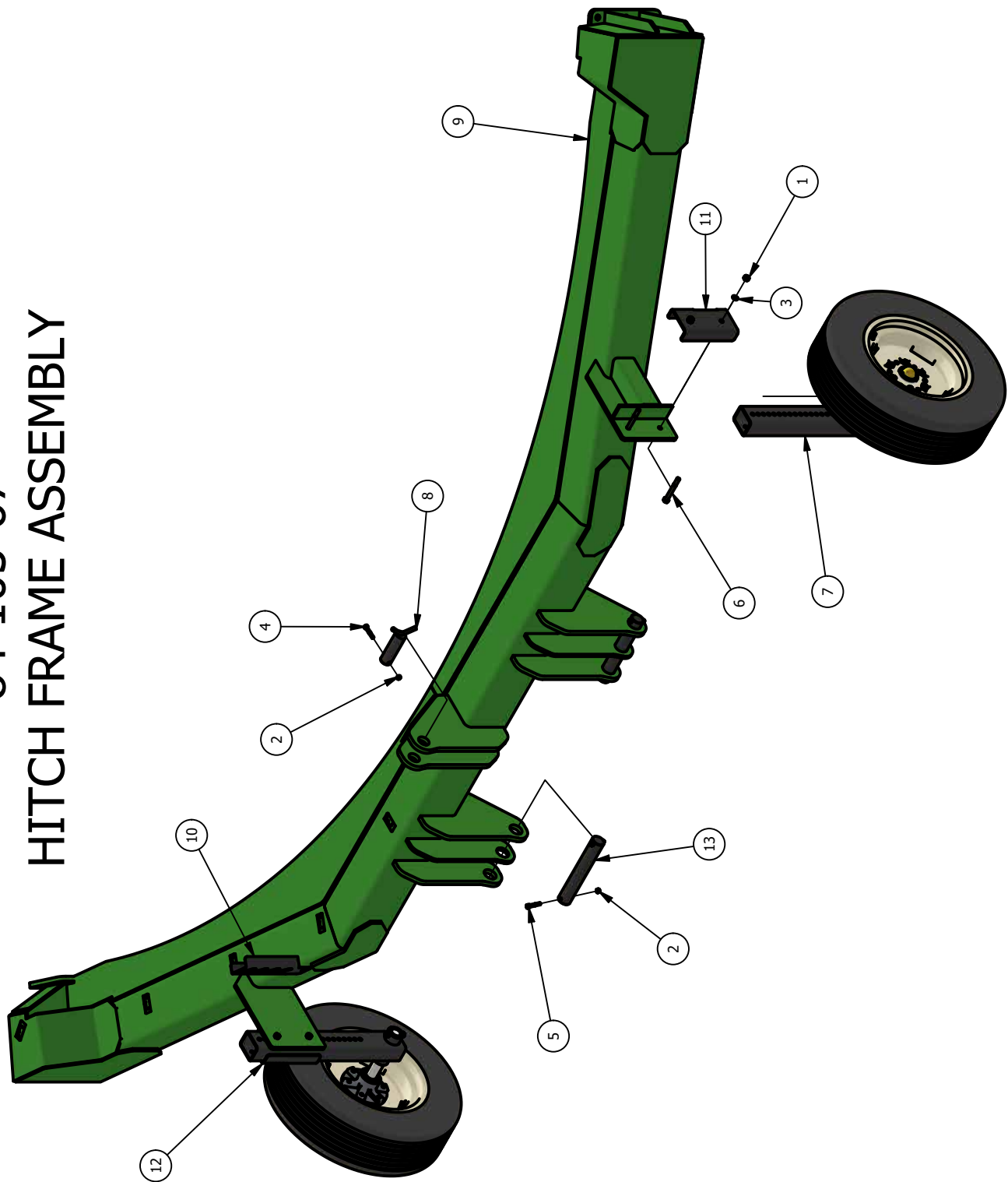
ITEM	ITEM QTY	PART NUMBER	DESCRIPTION
1	1	83-004-63	6300, 9400 SWITCH PLOW - REAR GAUGE WHEEL BUNDLE
2	1	84-110-67	TOOL BAR ASSEMBLY, 8 BOTTOM
3	1	84-112-67	2 BOTTOM EXTENSION

84-110-67 TOOL BAR ASSEMBLY, 8 BOTTOM



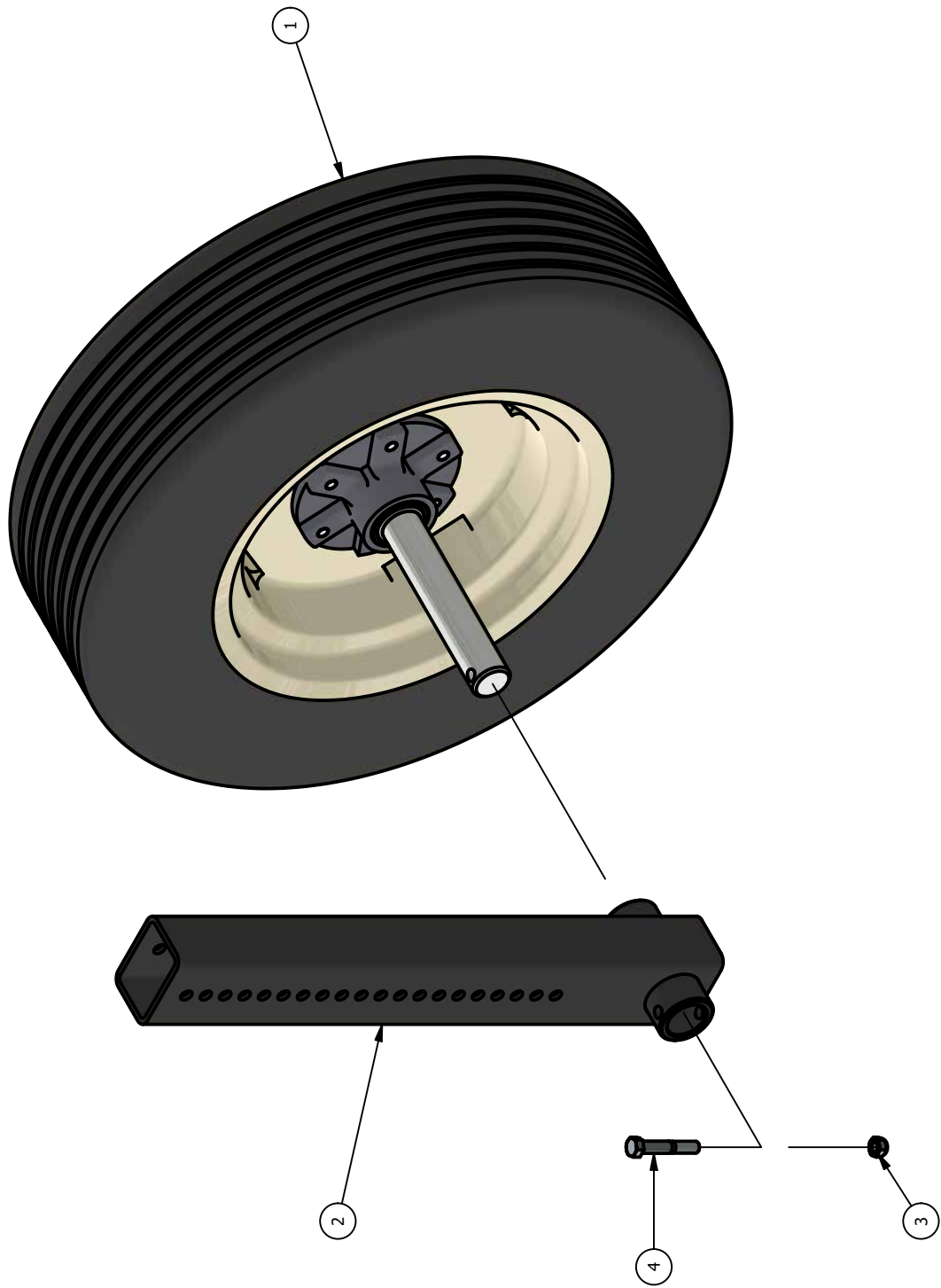
ITEM	ITEM QTY	PART NUMBER	DESCRIPTION
1	2	0812-1200	HEX NUT, 3/8
2	11	0812-2400	HEX NUT, 3/4
3	2	1602-1200	LOCK WASHER, 3/8 ZP
4	11	1602-2400	LOCK WASHER, 3/4 ZP
5	2	2816-1210	HEX HEAD BOLT, 3/8 X 1 GR5 ZP
6	11	2818-2424	HEX HEAD BOLT, 3/4 X 2 1/2 GR8
7	1	72-001-67	6300 SWITCH PLOW - FRONT BOTTOM KIT
8	6	72-002-67	6300 SWITCH PLOW - FORWARD INTERMEDIATE BOTTOM KIT
9	1	72-005-67	6300 SWITCH PLOW - FORWARD REAR BOTTOM KIT
10	1	84-104-67	6700 PIVOT PIN ASSEMBLY
11	1	84-113-67	ADJUSTABLE STOP ASSEMBLY
12	1	85-106-67	PIVOT FRAME WELDMENT
13	1	85-114-67	TOOL BAR WELDMENT

84-105-67 HITCH FRAME ASSEMBLY



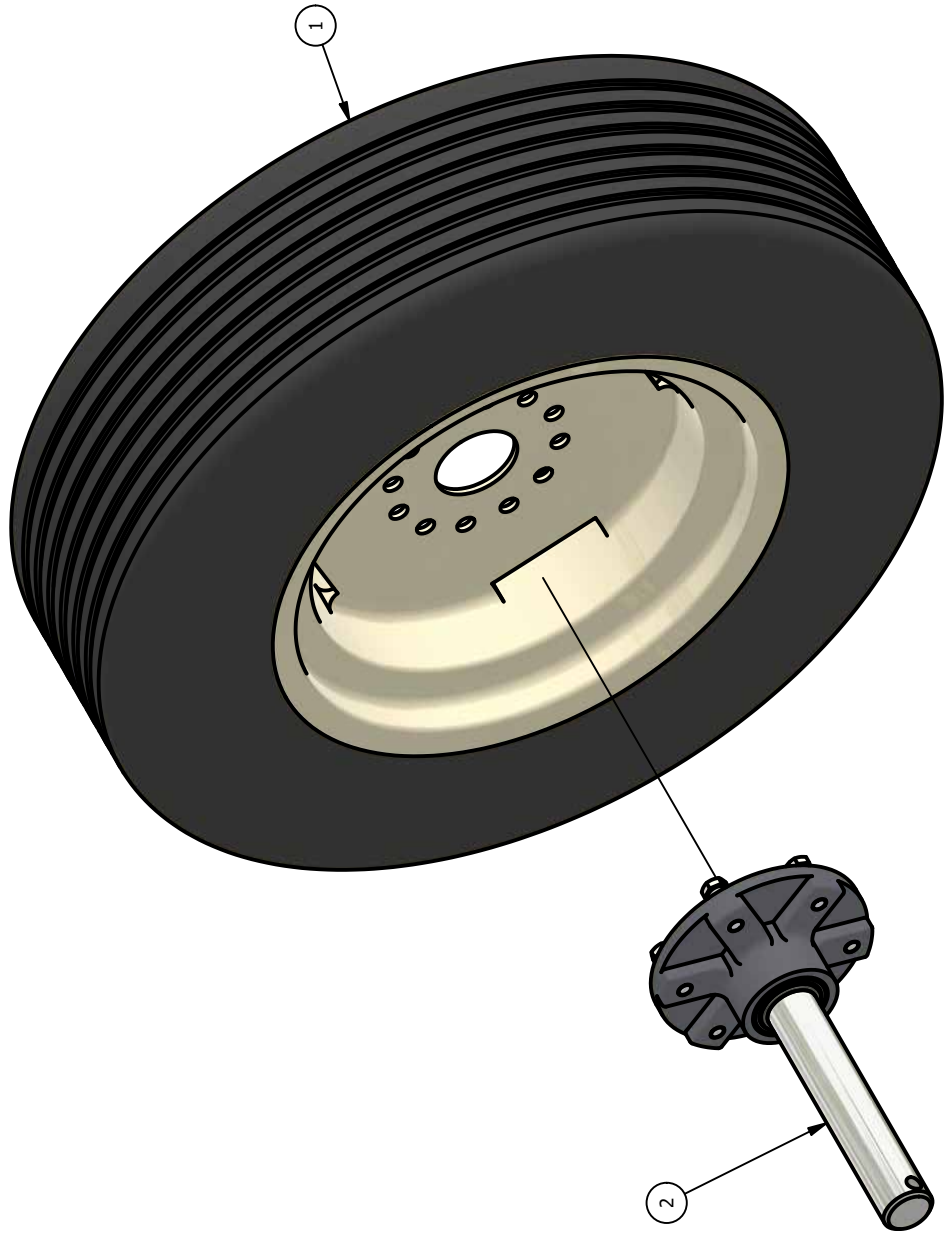
ITEM	ITEM QTY	PART NUMBER	DESCRIPTION
1	4	0812-1600	HEX NUT, 1/2
2	5	1412-1200	LOCK NUT, 3/8 STOVER ZP
3	4	1602-1600	LOCK WASHER, 1/2 ZP
4	1	2816-1222	HEX HEAD BOLT, 3/8 X 2 1/4 GR5 ZP
5	4	2816-1224	HEX HEAD BOLT, 3/8 X 2 1/2 GR5 ZP
6	4	2816-1644	HEX HEAD BOLT, 1/2 X 4 1/2 GR5 ZP
7	2	84-109-67	FRONT GAUGE WHEEL ASSEMBLY
8	1	85-110-67	UPPER HITCH PIN WELDMENT, CAT IV
9	1	85-117-67	HITCH FRAME WELDMENT
10	1	93-095-55	HYDRAULIC HOSE END HOLDER
11	1	93-131-67	FRONT GAUGE WHEEL CLAMP PLATE ROAD
12	1	93-135-67	FRONT GAUGE WHEEL CLAMP PLATE CURB
13	2	96-100-67	LOWER HITCH PIN, CAT IV

84-109-67
FRONT GAUGE WHEEL ASSEMBLY



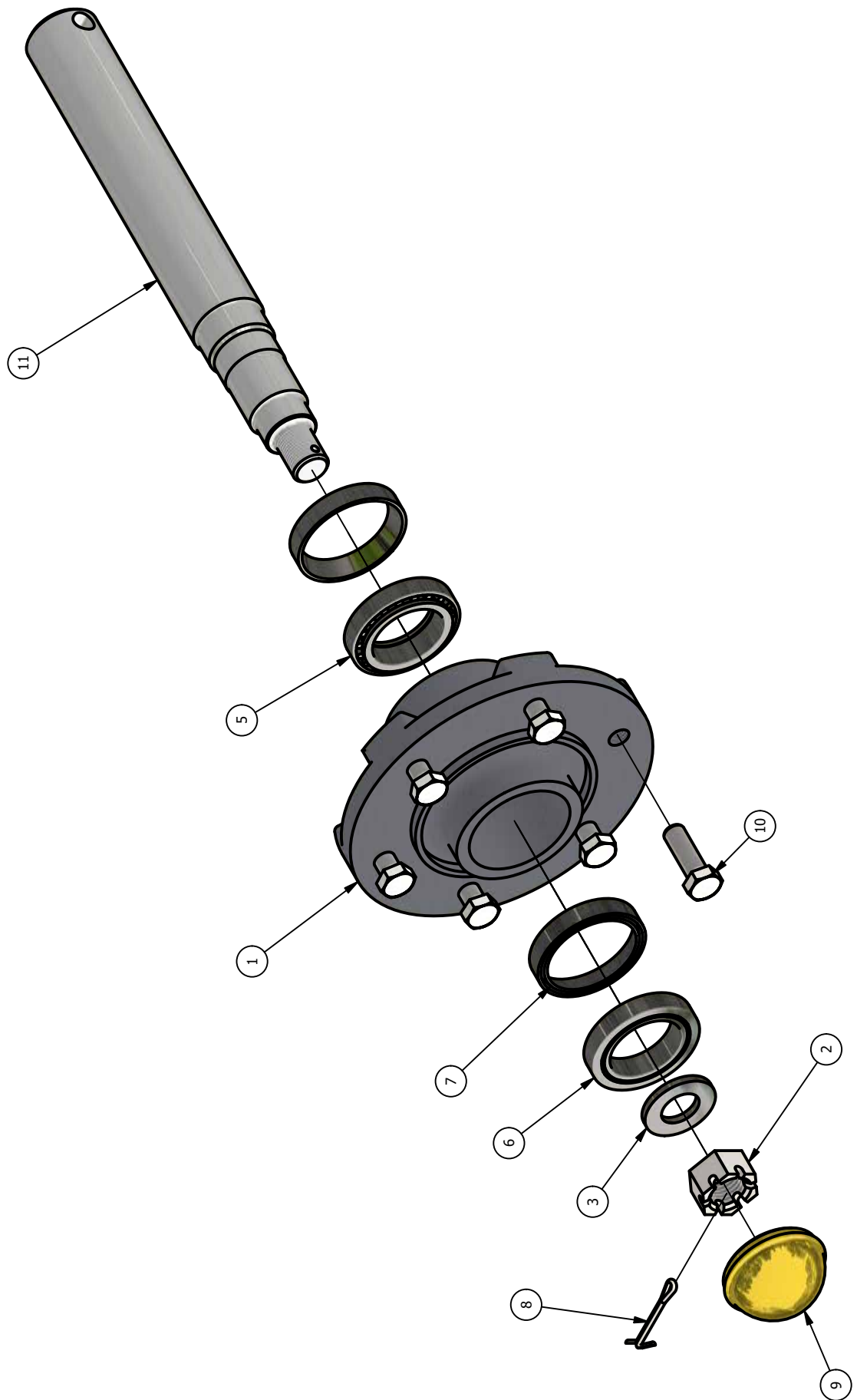
ITEM	ITEM QTY	PART NUMBER	DESCRIPTION
1	1	84-106-67	TIRE / WHEEL - HUB / SPINDLE ASSEMBLY
2	1	85-113-67	FRONT GAUGE WHEEL ARM
3	1	1412-1600	LOCK NUT, 1/2 STOVER ZP
4	1	2816-1630	HEX HEAD BOLT, 1/2 X 3 GR5 ZP

84-106-67
TIRE / WHEEL - HUB / SPINDLE ASSEMBLY



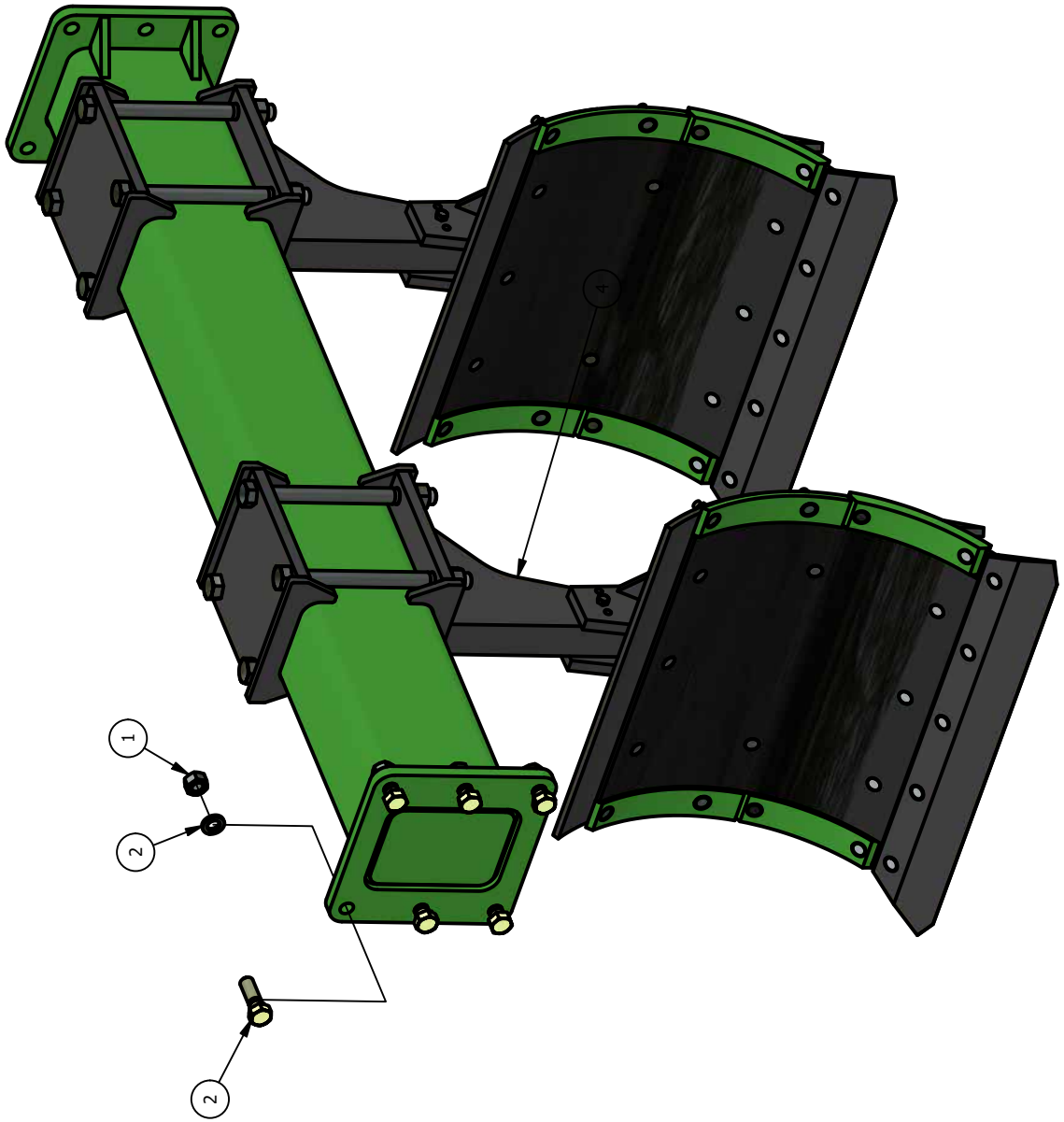
ITEM	ITEM QTY	PART NUMBER	DESCRIPTION
1	1	84-2804-01	TIRE / WHEEL ASSEMBLY
2	1	84-108-67	HUB / SPINDLE ASSEMBLY

84-108-67 HUB / SPINDLE ASSEMBLY



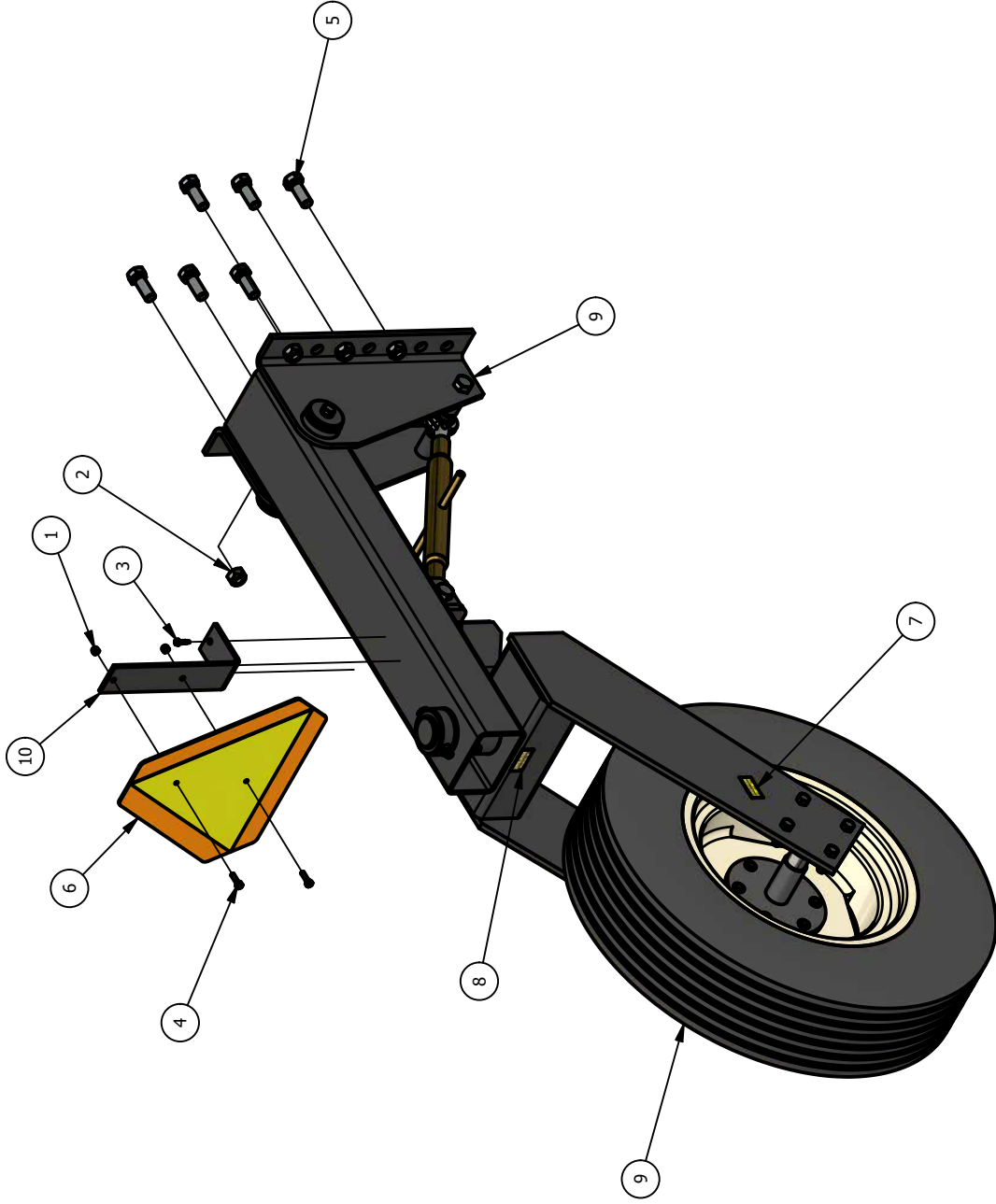
ITEM	ITEM QTY	PART NUMBER	DESCRIPTION
1	1	77-001-02	6 BOLT HUB W/RACES - PICTORIAL
2	1	77-004-02	SPINDLE NUT - PICTORIAL
3	1	77-005-02	SPINDLE WASHER - PICTORIAL
4	1	77-006-02	HUB SEAL - PICTORIAL
5	1	77-007-02	INNER ROLLER BEARING - PICTORIAL
6	1	77-008-02	OUTER ROLLER BEARING - PICTORIAL
7	1	77-010-02	OUTER RACE - PICTORIAL
8	1	77-011-02	COTTER PIN - PICTORIAL
9	1	77-012-02	DUST CAP - PICTORIAL
10	6	77-013-02	LUG BOLT 1/2-20 - PICTORIAL
11	1	96-104-67	SPINDLE, 6700 FRONT GAUGE WHEEL

84-112-67
2 BOTTOM EXTENSION

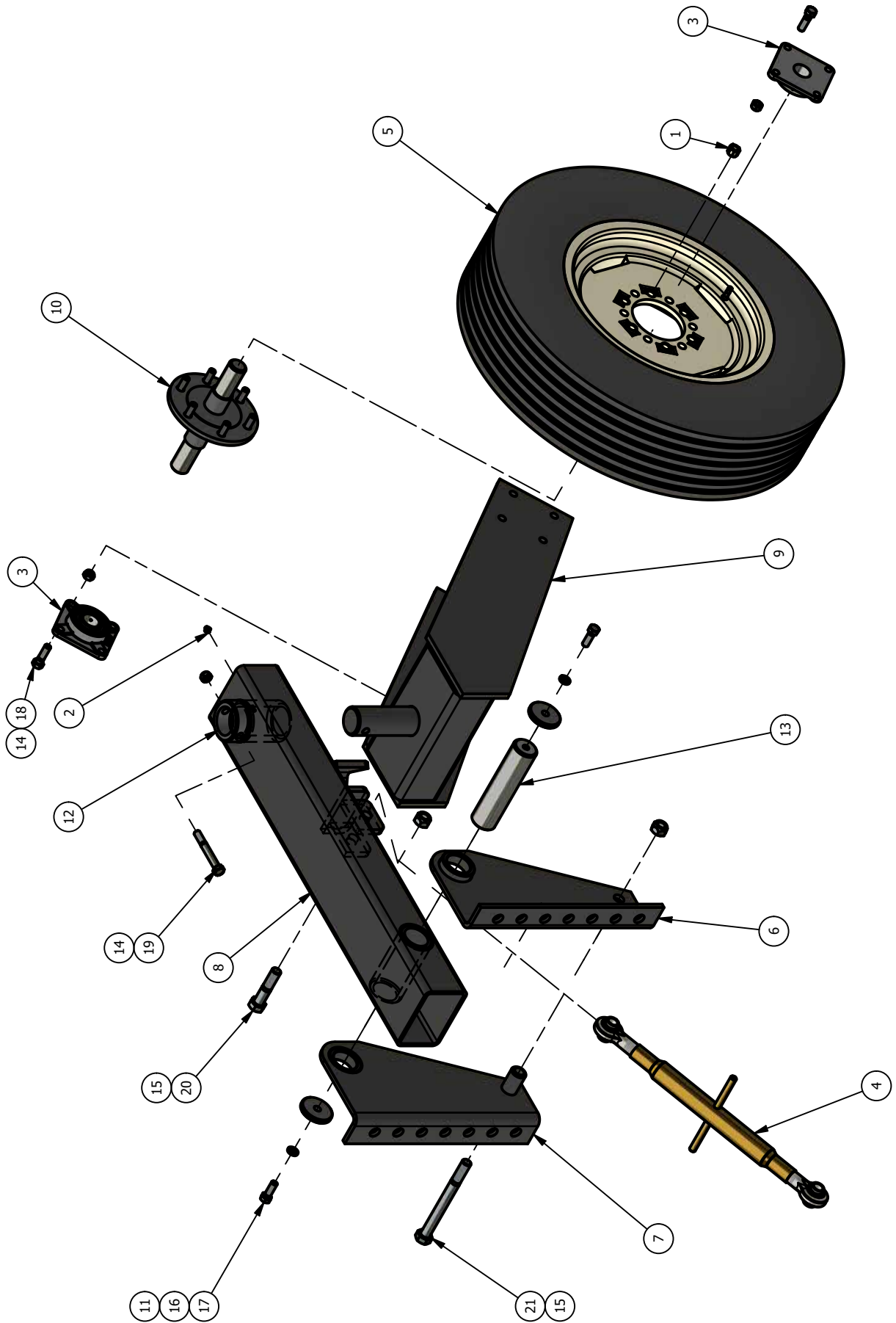


ITEM	ITEM QTY	PART NUMBER	DESCRIPTION
1	6	0812-2400	HEX NUT, 3/4
2	6	1602-2400	LOCK WASHER, 3/4 ZP
2	6	2818-2424	HEX HEAD BOLT, 3/4 X 2 1/2 GR8
4	2	72-005-67	6300 SWITCH PLOW - FORWARD REAR BOTTOM KIT
5	1	85-120-67	2 BOTTOM EXTENSION

83-004-63
6300, 9400 SWITCH PLOW - REAR GAUGE WHEEL BUNDLE



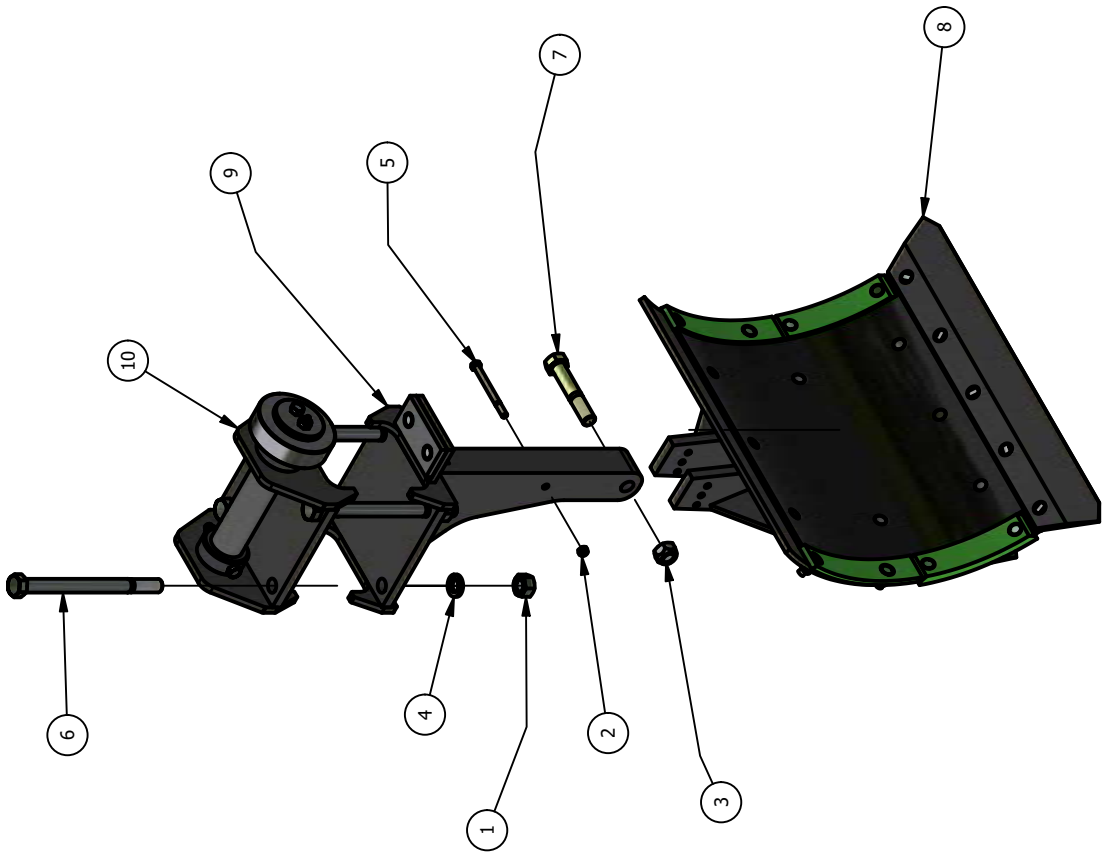
84-1000-63 REAR GAUGE WHEEL MAIN ASSEMBLY



ITEM	ITEM QTY	PART NUMBER	DESCRIPTION
1	2	0912-0800	LOCK NUT, 1/4 NYLOCK ZP
2	6	1412-2400	LOCK NUT, 3/4 STOVER ZP
3	2	1913-1010	SELF TAP SCREW, 12X1
4	2	2816-0810	HEX HEAD BOLT, 1/4 X 1 GR5 ZP
5	6	2816-2420	HEX HEAD BOLT, 3/4 X 2 GR5 ZP
6	1	79-001-01M	SLOW MOVING VEHICLE SIGN
7	2	79-005-DC	3" X 5" CAUTION - KEEP LUGS TIGHT DECAL
8	1	79-006-DC	3" X 5" GREASE DAILY DECAL
9	1	84-1000-63	REAR GAUGE WHEEL MAIN ASSEMBLY
10	1	93-1020-63	SMV BRACKET

ITEM	ITEM QTY	PART NUMBER	DESCRIPTION
1	6	77-024-88	1/2" 90° NUT, SAE GRADE 8
2	1	79-005-38	1/8" NPT GREASE FITTING
3	2	79-277-06	4 HOLE FLANGE BEARING, 1-7/16" BORE - PICTORIAL
4	1	79-297-82	ADJUSTABLE TOP LINK
5	1	84-1001-63	REAR GAUGE WHEEL - TIRE, WHEEL & VALVE STEM ASSEMBLY
6	1	85-1001-63	REAR GAUGE WHEEL MOUNT - LH WELDMENT
7	1	85-1002-63	REAR GAUGE WHEEL MOUNT - RH WELDMENT
8	1	85-1003-63	REAR GAUGE WHEEL ARM WELDMENT
9	1	85-1004-63	REAR GAUGE WHEEL YOKE WELDMENT
10	1	85-1005-63	GAUGE WHEEL HUB & AXLE WELDMENT
11	2	93-1006-63	GAUGE WHEEL ARM PIN CAP
12	1	94-1002-63	GAUGE WHEEL & PIVOT ROLLER RETAINER BUSHING
13	1	96-1000-63	GAUGE WHEEL ARM PIN
14	9	1412-1600	LOCK NUT, 1/2 STOVER ZP
15	2	1412-2400	LOCK NUT, 3/4 STOVER ZP
16	2	1602-1600	LOCK WASHER, 1/2 ZP
17	2	2816-1614	HEX HEAD BOLT, 1/2 X 1 1/2 GR5 ZP
18	8	2816-1616	HEX HEAD BOLT, 1/2 X 1 3/4 GR5 ZP
19	1	2816-1640	HEX HEAD BOLT, 1/2 X 4 GR5 ZP
20	1	2816-2434	HEX HEAD BOLT, 3/4 X 3 1/2 GR5 ZP
21	1	2816-2480	HEX HEAD BOLT, 3/4 X 8 GR5 ZP

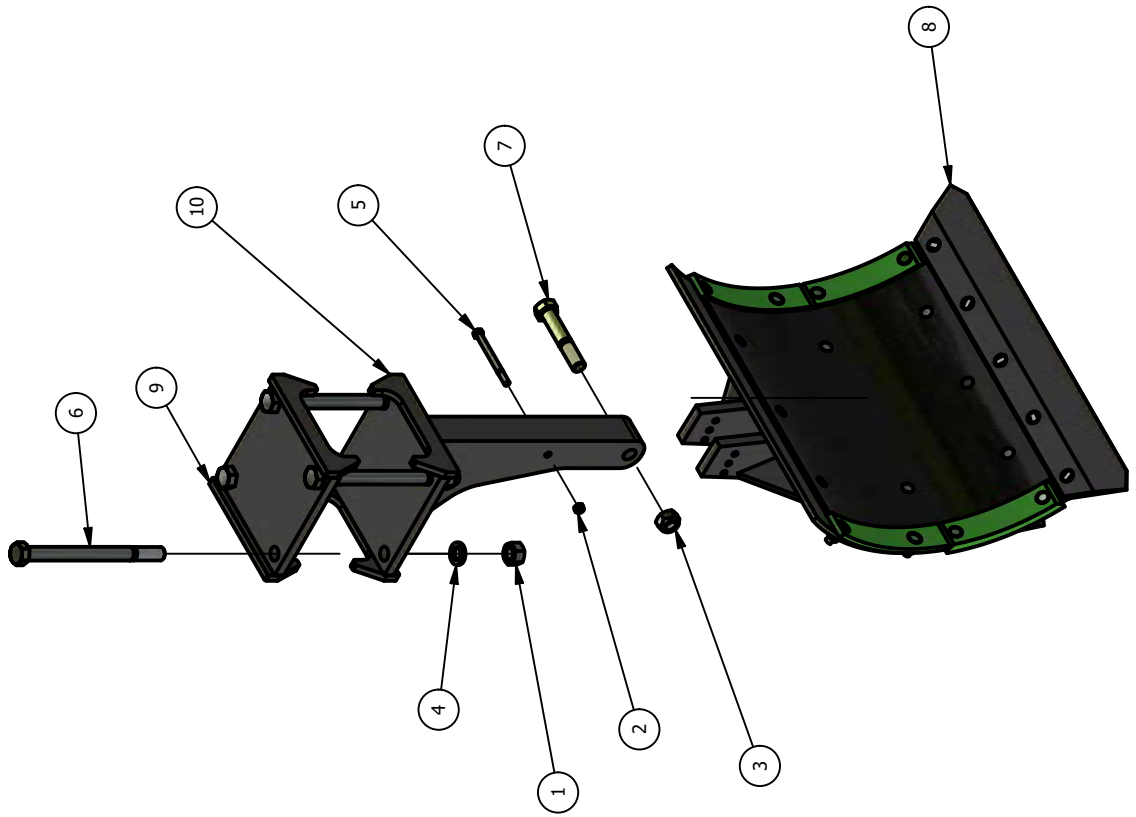
72-001-67 6300 SWITCH PLOW - FRONT BOTTOM KIT



ITEM	ITEM QTY	PART NUMBER	DESCRIPTION
1	4	0812-2800	HEX NUT, 7/8
2	1	1412-1200	LOCK NUT, 3/8 STOVER ZP
3	1	1412-2800	LOCK NUT, 7/8 STOVER ZP
4	4	1602-2800	LOCK WASHER, 7/8 ZP
5	1	2816-1244	HEX HEAD BOLT, 3/8 X 4 1/2 GR5 ZP
6	4	2816-2811	7/8-9 x 11 HEX HEAD BOLT
7	1	2818-2850	HEX HEAD BOLT, 7/8 X 5 GR 8
8	1	83-003-36	INTERMEDIATE MOLD BOARD W/ SHORT SLIDES - BUNDLE
9	1	84-1007-63	FRONT SHANK ASSEMBLY
10	1	84-214-36	TOOL BAR PIVOT ROLLER ASSEMBLY

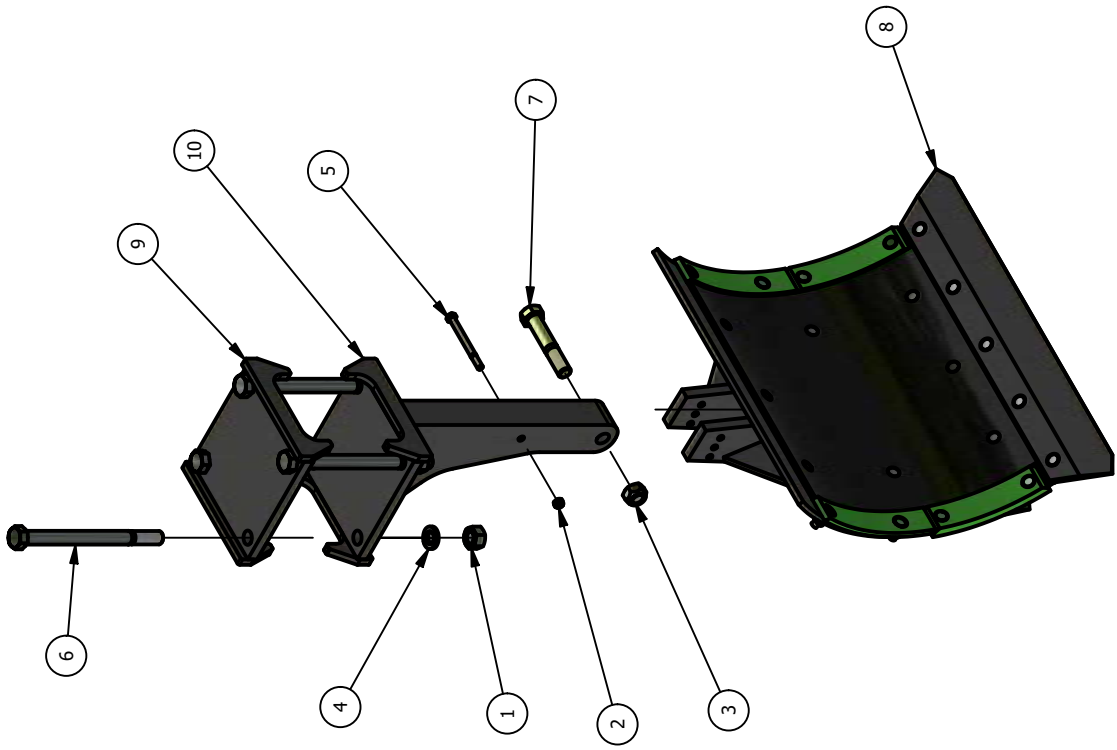
72-002-67

6300 SWITCH PLOW - FORWARD INTERMEDIATE BOTTOM KIT



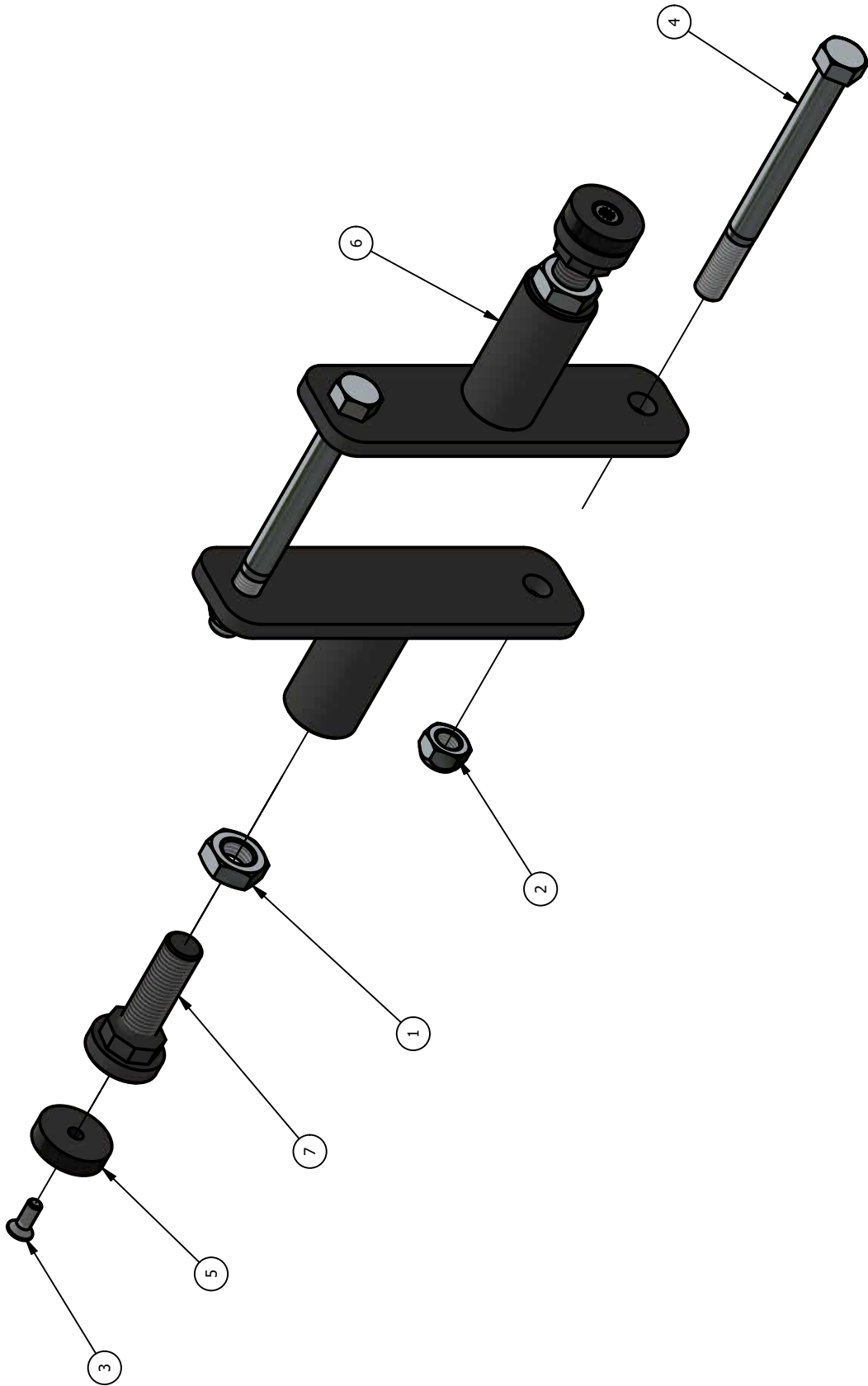
ITEM	ITEM QTY	PART NUMBER	DESCRIPTION
1	4	0812-2800	HEX NUT, 7/8
2	1	1412-1200	LOCK NUT, 3/8 STOVER ZP
3	1	1412-2800	LOCK NUT, 7/8 STOVER ZP
4	4	1602-2800	LOCK WASHER, 7/8 ZP
5	1	2816-1244	HEX HEAD BOLT, 3/8 X 4 1/2 GR5 ZP
6	4	2816-2811	7/8-9 x 11 HEX HEAD BOLT
7	1	2818-2850	HEX HEAD BOLT, 7/8 X 5 GR 8
8	1	83-003-36	INTERMEDIATE MOLD BOARD W/ SHORT SLIDES - BUNDLE
9	1	85-017-36	TOP PLATE WELDMENT, 6" TOOL BAR
10	1	85-222-36	INTERMEDIATE SHANK WELDMENT

72-005-67 6300 SWITCH PLOW - FORWARD REAR BOTTOM KIT



ITEM	ITEM QTY	PART NUMBER	DESCRIPTION
1	4	0812-2800	HEX NUT, 7/8
2	1	1412-1200	LOCK NUT, 3/8 STOVER ZP
3	1	1412-2800	LOCK NUT, 7/8 STOVER ZP
4	4	1602-2800	LOCK WASHER, 7/8 ZP
5	1	2816-1244	HEX HEAD BOLT, 3/8 X 4 1/2 GR5 ZP
6	4	2816-2811	7/8-9 x 11 HEX HEAD BOLT
7	1	2818-2850	HEX HEAD BOLT, 7/8 X 5 GR 8
8	1	83-206-36	MOLD BOARD W/ LONG SLIDES - BUNDLE
9	1	85-017-36	TOP PLATE WELDMENT, 6" TOOL BAR
10	1	85-222-36	INTERMEDIATE SHANK WELDMENT

84-1113-67 ADJUSTABLE STOP ASSEMBLY



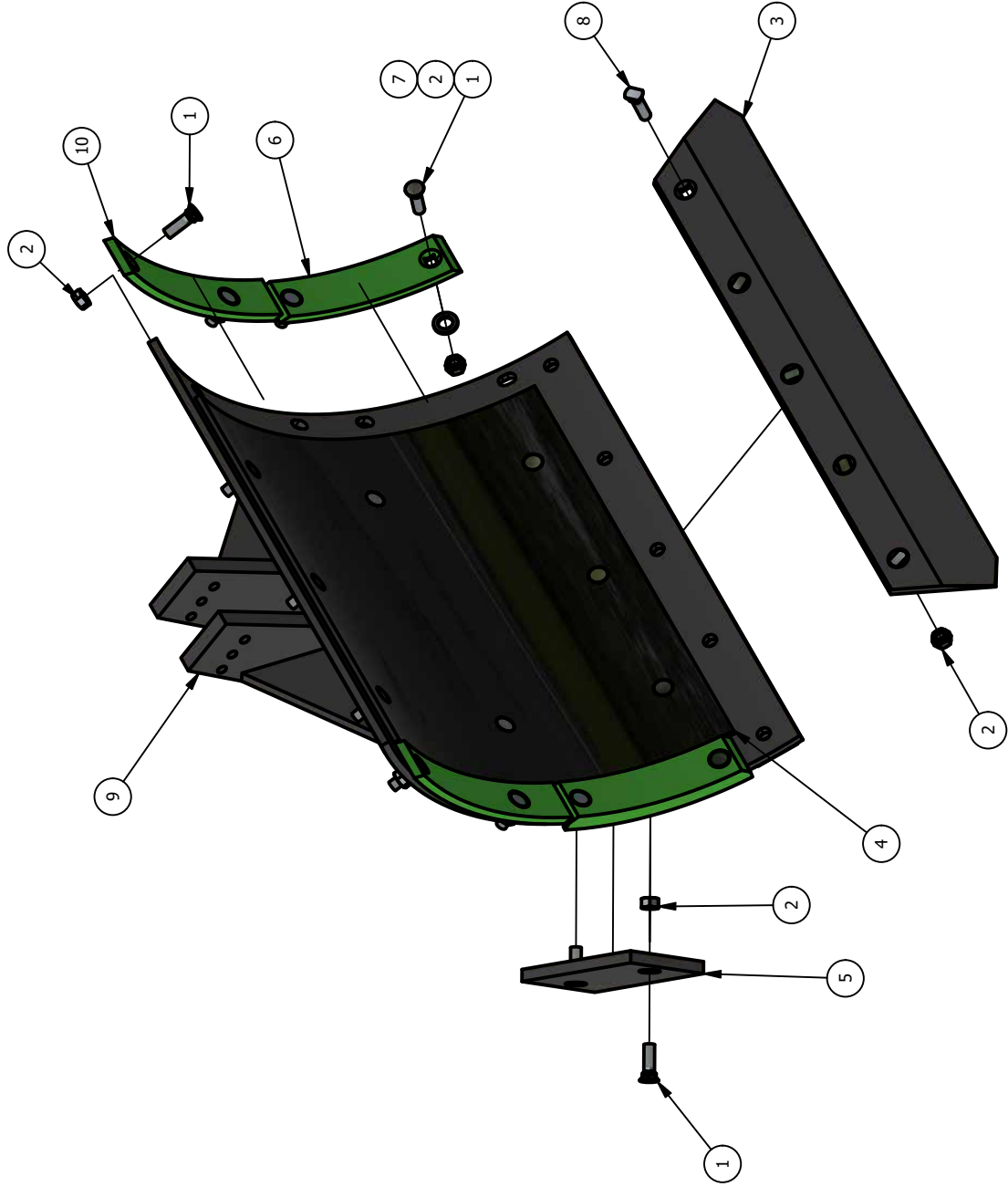
ITEM	ITEM QTY	PART NUMBER	DESCRIPTION
1	2	1012-3200	1-8 JAM NUT
2	2	1412-2400	LOCK NUT, 3/4 STOVER ZP
3	2	2216-1210	COUNTERSUNK FLAT HEAD 3/8-16 X 1
4	2	2816-2480	HEX HEAD BOLT, 3/4 X 8 GR5 ZP
5	2	77-001-67	STOP PAD
6	2	85-121-67	ADJ TOOLBAR STOP WELDMENT
7	2	96-106-67	TOOLBAR STOP ADJUSTMENT BAR

84-214-36
TOOL BAR PIVOT ROLLER ASSEMBLY



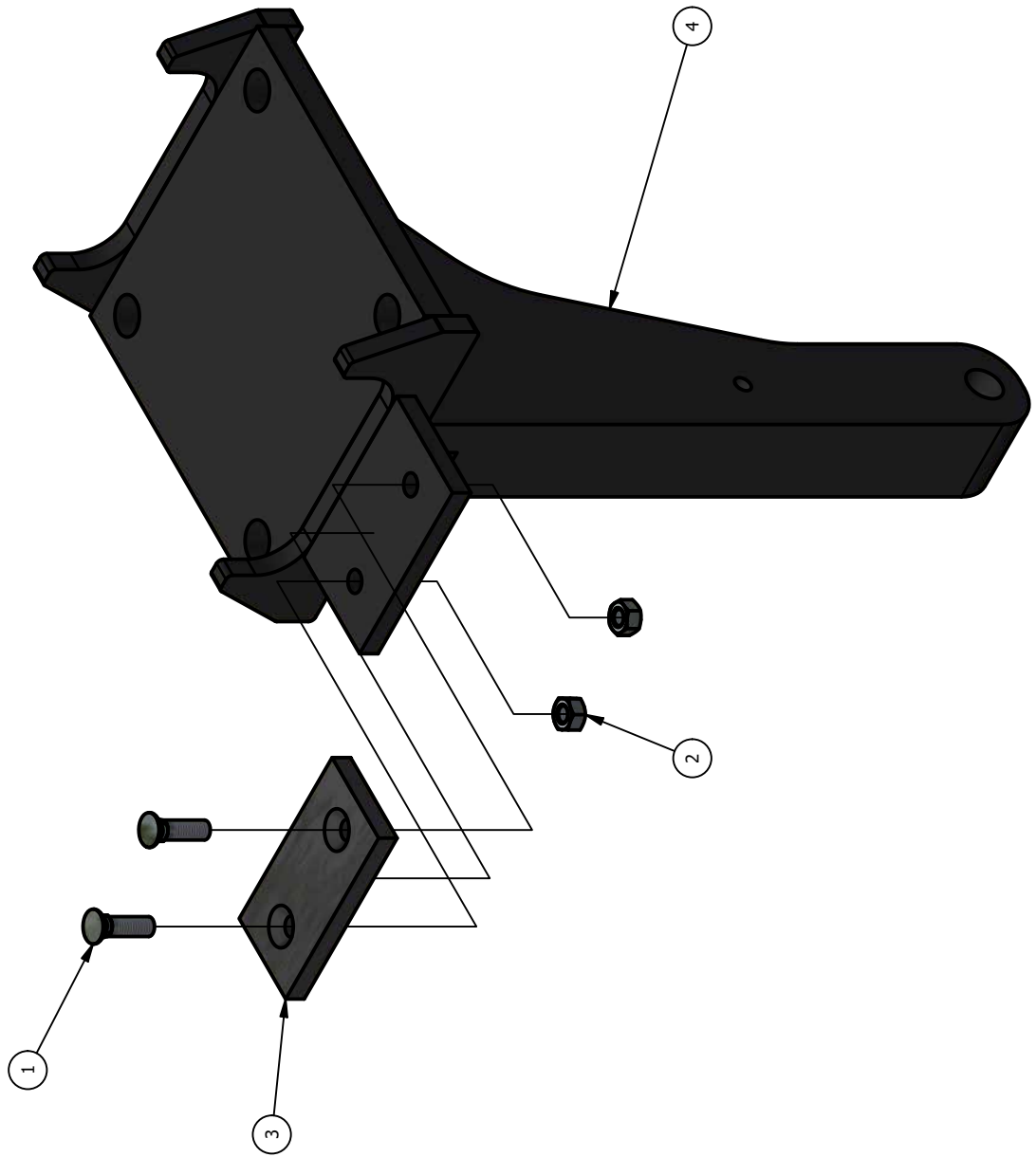
ITEM	ITEM QTY	PART NUMBER	DESCRIPTION
1	1	1412-1600	LOCK NUT, 1/2 STOVER ZP
2	1	2816-1610	HEX HEAD BOLT, 1/2 X 1 GR5 ZP
3	1	2816-1640	HEX HEAD BOLT, 1/2 X 4 GR5 ZP
4	1	84-1015-63	GREASE BOLT ASSEMBLY
5	1	84-213-36	ROLLER ASSEMBLY
6	1	85-221-36	PIVOT BAR ROLLER MOUNTING PLATE WELDMENT
7	1	96-204-36	ROLLER SHAFT
8	1	96-205-36	PIVOT ROLLER PIN CAP

83-003-36 INTERMEDIATE MOLD BOARD W/ SHORT SLIDES - BUNDLE

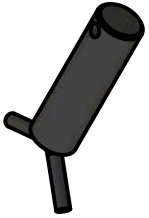







ITEM	ITEM QTY	PART NUMBER	DESCRIPTION
1	20	0315-1414	PLOW BOLT, 7/16x1-1/2 Gr5
2	25	0812-1400	HEX NUT, 7/16
3	1	79-006-36	PLOW SHARE - HEAT TREATED
4	1	79-201-36	1/4" UHMW PLASTIC WING
5	2	79-204-36	SMALL SLIDE - MULTI LIFE
6	2	79-208-36	LOWER WEAR SHIN
7	4	79-218-36	OICW - RUBBER WASHER
8	5	79-483-36	PLOW BOLT, 7/16 x 1 3/4, CLIP HEAD
9	1	85-006-36	MOLD BOARD WELDMENT
10	2	98-207-36	UPPER WEAR SHIN

84-1007-63 FRONT SHANK ASSEMBLY



ITEM	ITEM QTY	PART NUMBER	DESCRIPTION
1	2	0315-1414	PLOW BOLT, 7/16x1-1/2 Gr5
2	2	0812-1400	HEX NUT, 7/16
3	1	79-1002-63	SLIDE WEAR PAD FOR FRONT SHANK
4	1	85-224-36	FRONT SHANK WELDMENT

<p>85-110-67 UPPER HITCH PIN WELDMENT, CAT IV</p> 	<p>93-131-67 FRONT GAUGE WHEEL CLAMP PLATE ROAD</p> 
<p>84-2804-01 TIRE / WHEEL ASSEMBLY</p> 	
<p>93-135-67 FRONT GAUGE WHEEL CLAMP PLATE CURB</p> 	<p>93-095-55 HYDRAULIC HOSE END HOLDER</p> 
<p>96-100-67 LOWER HITCH PIN, CAT IV</p> 	<p>96-104-67 SPINDLE, 6700 FRONT GAUGE WHEEL</p> 