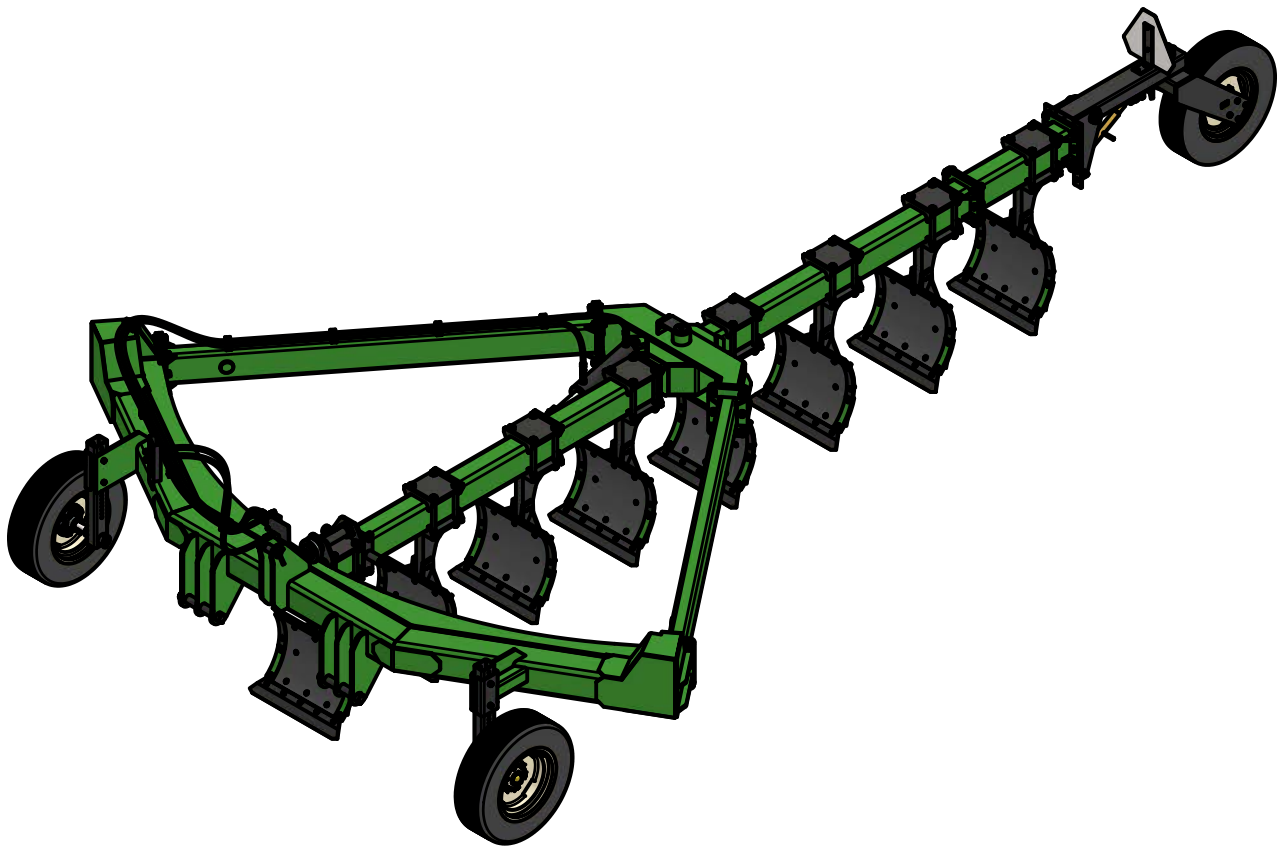




# 6508 SUPER HD PLOW

## Parts Manual



216 INDUSTRIAL BLVD., RAMP 2  
BAINBRIDGE, GA 39817  
(229) 246-0350  
[www.harrellag.com](http://www.harrellag.com)

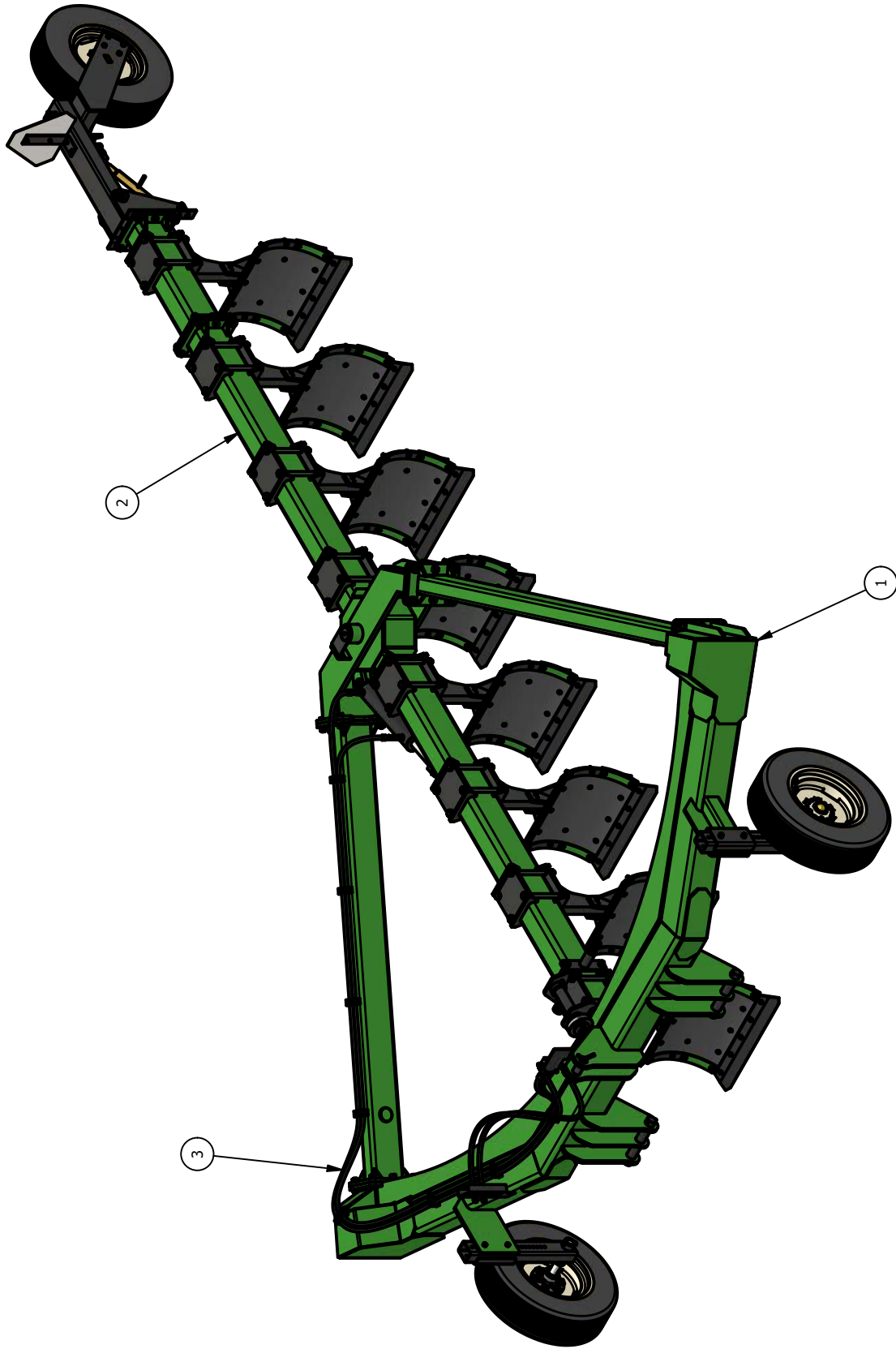
65-PM-002-01



## TABLE OF CONTENTS

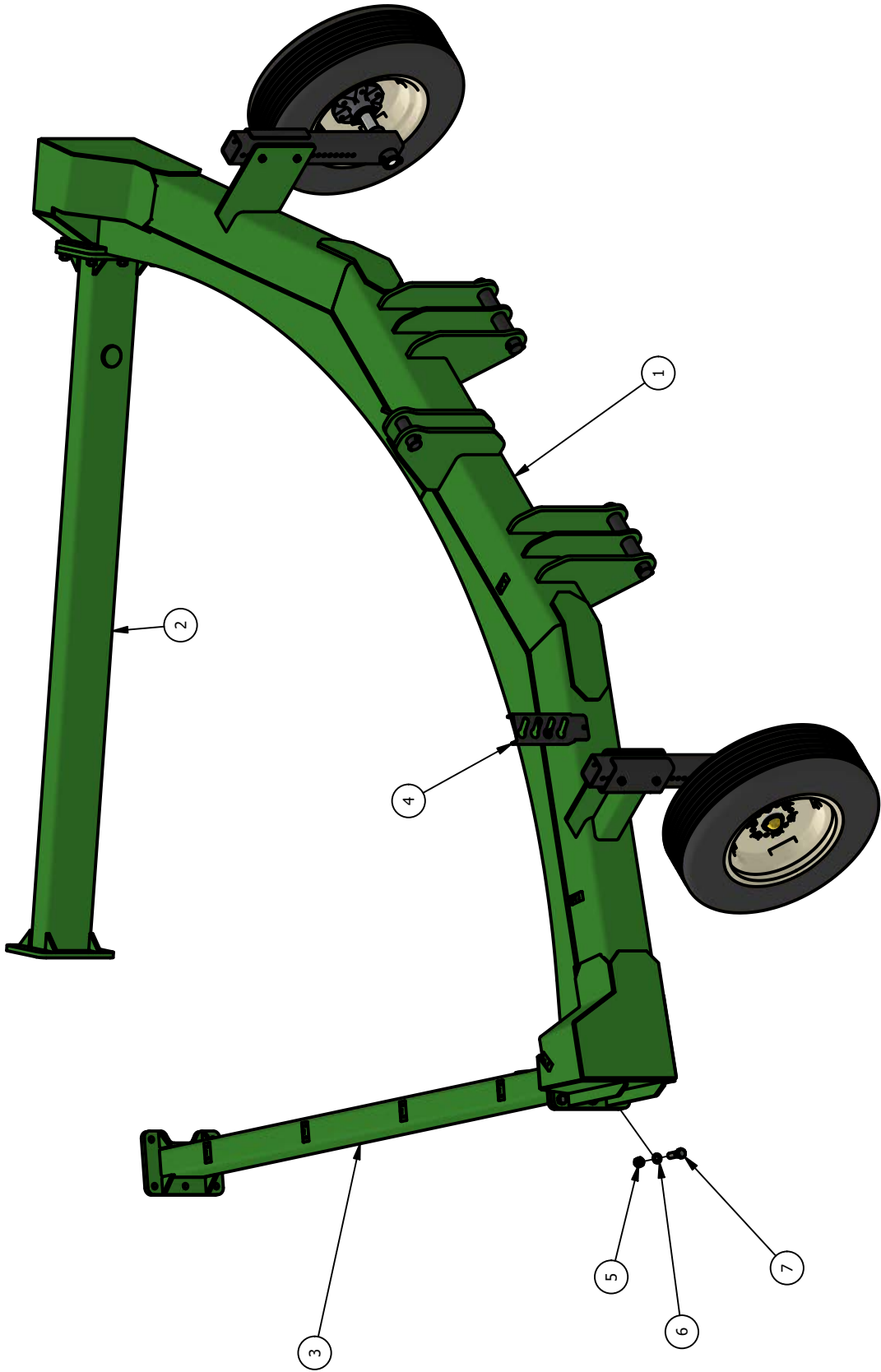
|                 |  |    |
|-----------------|--|----|
| 70-002-63.....  | 6508 - SUPER HD PLOW.....              | 4  |
| 84-102-65.....  | MAIN FRAME ASSEMBLY.....               | 6  |
| 84-104-65.....  | 8 BOTTOM TOOLBAR ASSEMBLY.....         | 8  |
| 84-100-65.....  | 7 BOTTOM TOOLBAR ASSEMBLY.....         | 10 |
| 84-101-65.....  | HITCH FRAME ASSEMBLY.....              | 12 |
| 84-109-67.....  | FRONT GAUGE WHEEL ASSEMBLY.....        | 14 |
| 84-106-67.....  | TIRE/WHEEL - HUB/SPINDLE ASSEMBLY..... | 16 |
| 84-108-67.....  | HUB/SPINDLE ASSEMBLY.....              | 18 |
| 84-111-67.....  | 1 BOTTOM EXTENSION.....                | 20 |
| 83-004-63.....  | REAR GAUGE WHEEL BUNDLE.....           | 22 |
| 84-1000-63..... | REAR GAUGE WHEEL ASSEMBLY.....         | 24 |
| 72-001-67.....  | FRONT BOTTOM KIT.....                  | 26 |
| 72-002-67.....  | FORWARD INTERMEDIATE BOTTOM KIT.....   | 28 |
| 72-005-67.....  | FORWARD REAR BOTTOM KIT.....           | 30 |
| 84-113-67.....  | ADJUSTABLE STOP ASSEMBLY.....          | 32 |
| 84-514-36.....  | TOOL BAR PIVOT ROLLER ASSEMBLY.....    | 34 |
| 83-003-36.....  | MOLD BOARD ASSEMBLY.....               | 36 |
| 84-1007-63..... | FRONT SHANK ASSEMBLY.....              | 38 |
| MISC PARTS..... |  | 40 |

70-002-65  
8 BOTTOM SUPER HD PLOW



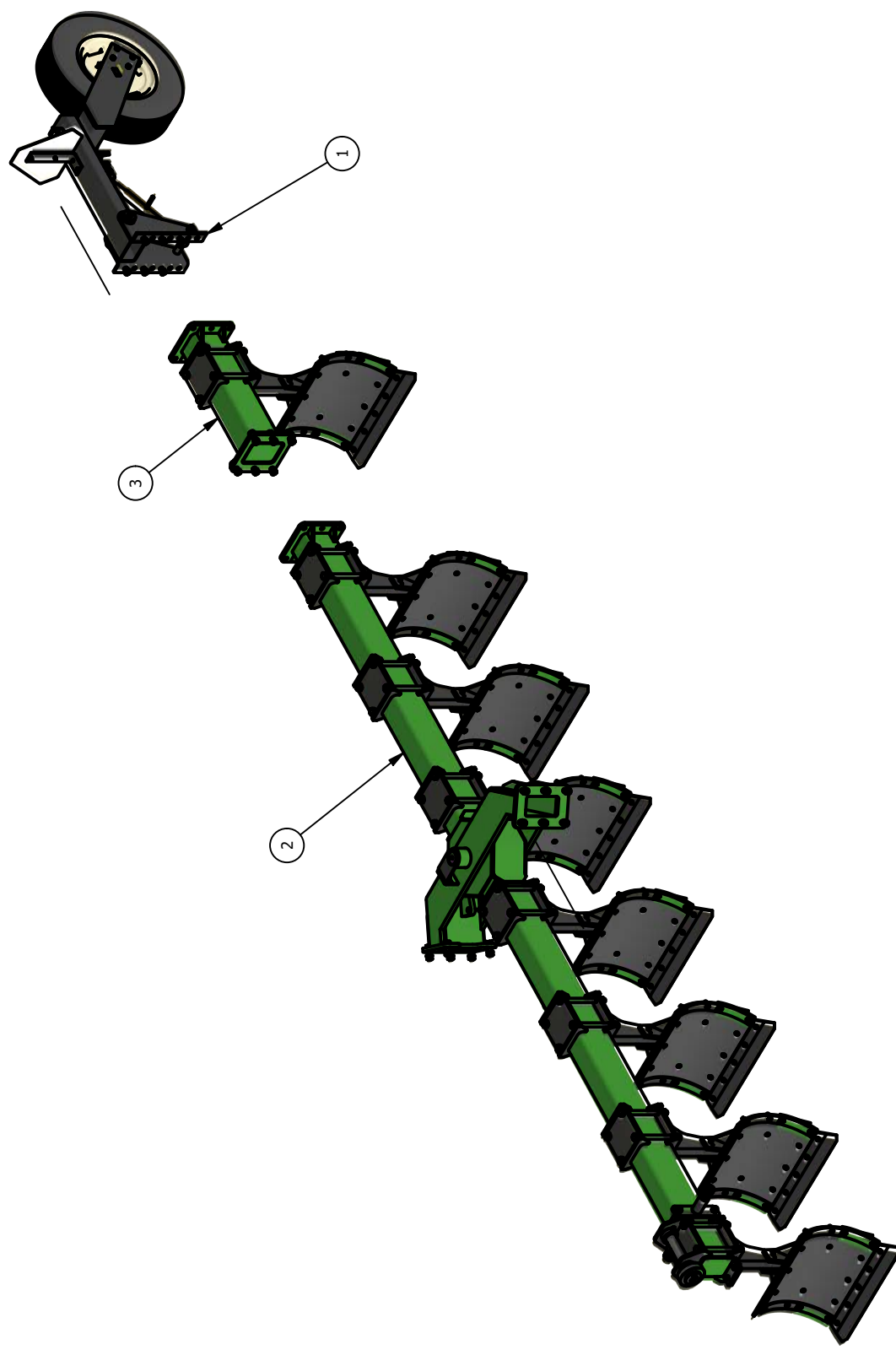
| ITEM | ITEM QTY | PART NUMBER | DESCRIPTION                 |
|------|----------|-------------|-----------------------------|
| 1    | 1        | 84-102-65   | MAIN FRAME ASSEMBLY         |
| 2    | 1        | 84-104-65   | 8 BOTTOM TOOLBAR ASSEMBLY   |
| 3    | 1        | 83-001-65   | HYDRAULIC RUN KIT 6500 PLOW |

# 84-102-65 MAIN FRAME ASSEMBLY



| ITEM | ITEM QTY | PART NUMBER | DESCRIPTION                       |
|------|----------|-------------|-----------------------------------|
| 1    | 1        | 84-101-65   | HITCH FRAME ASSEMBLY              |
| 2    | 1        | 85-107-65   | SIDE TUBE WELDMENT, LEFT          |
| 3    | 1        | 85-108-65   | SIDE TUBE WELDMENT, CYLINDER SIDE |
| 4    | 1        | 93-095-55   | HYDRAULIC HOSE END HOLDER         |
| 5    | 12       | 0812-2400   | HEX NUT, 3/4                      |
| 6    | 12       | 1602-2400   | LOCK WASHER, 3/4 ZP               |
| 7    | 12       | 2818-2424   | HEX HEAD BOLT, 3/4 X 2 1/2 GR8    |

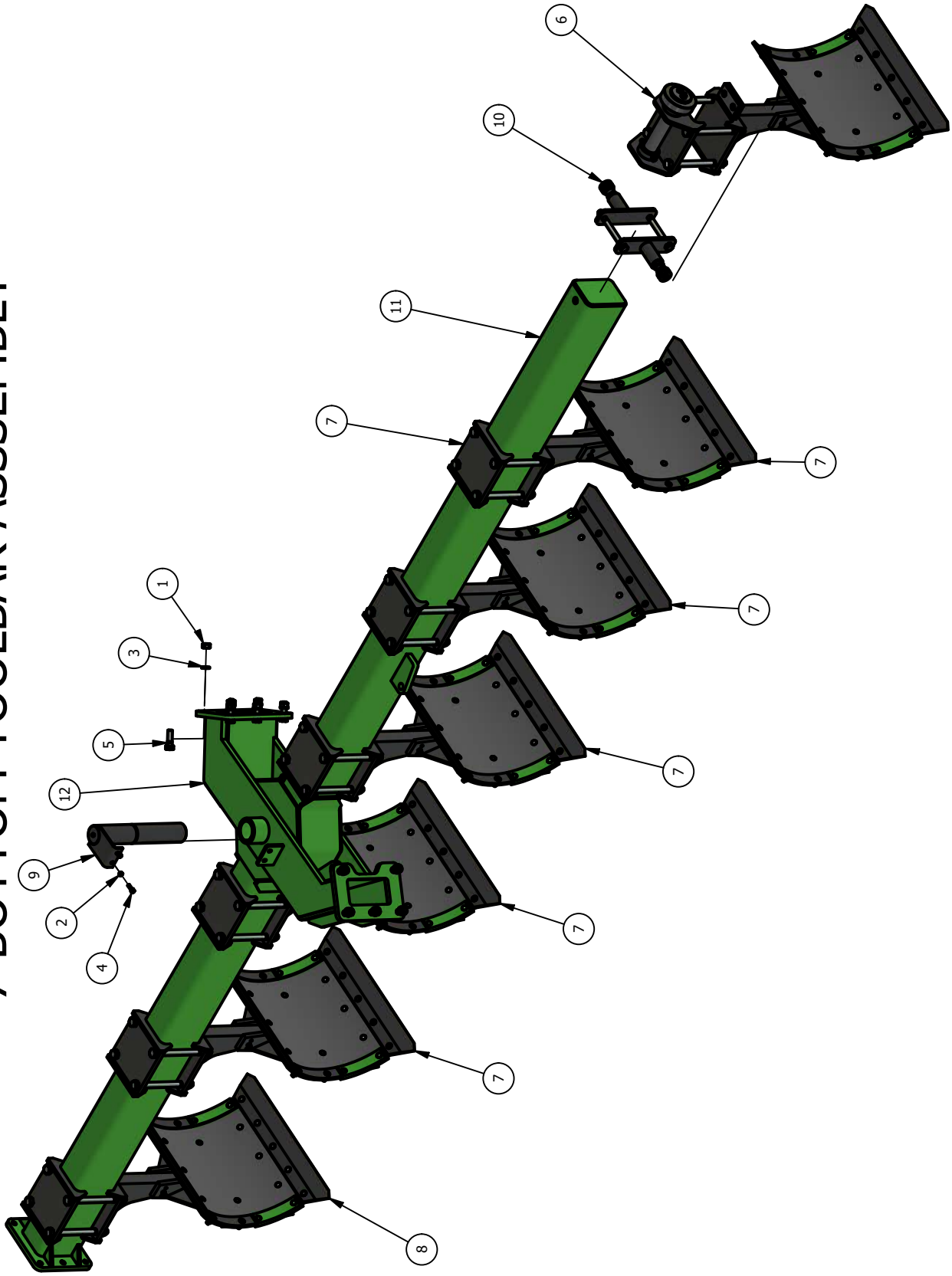
# 84-104-65 8 BOTTOM TOOLBAR ASSEMBLY





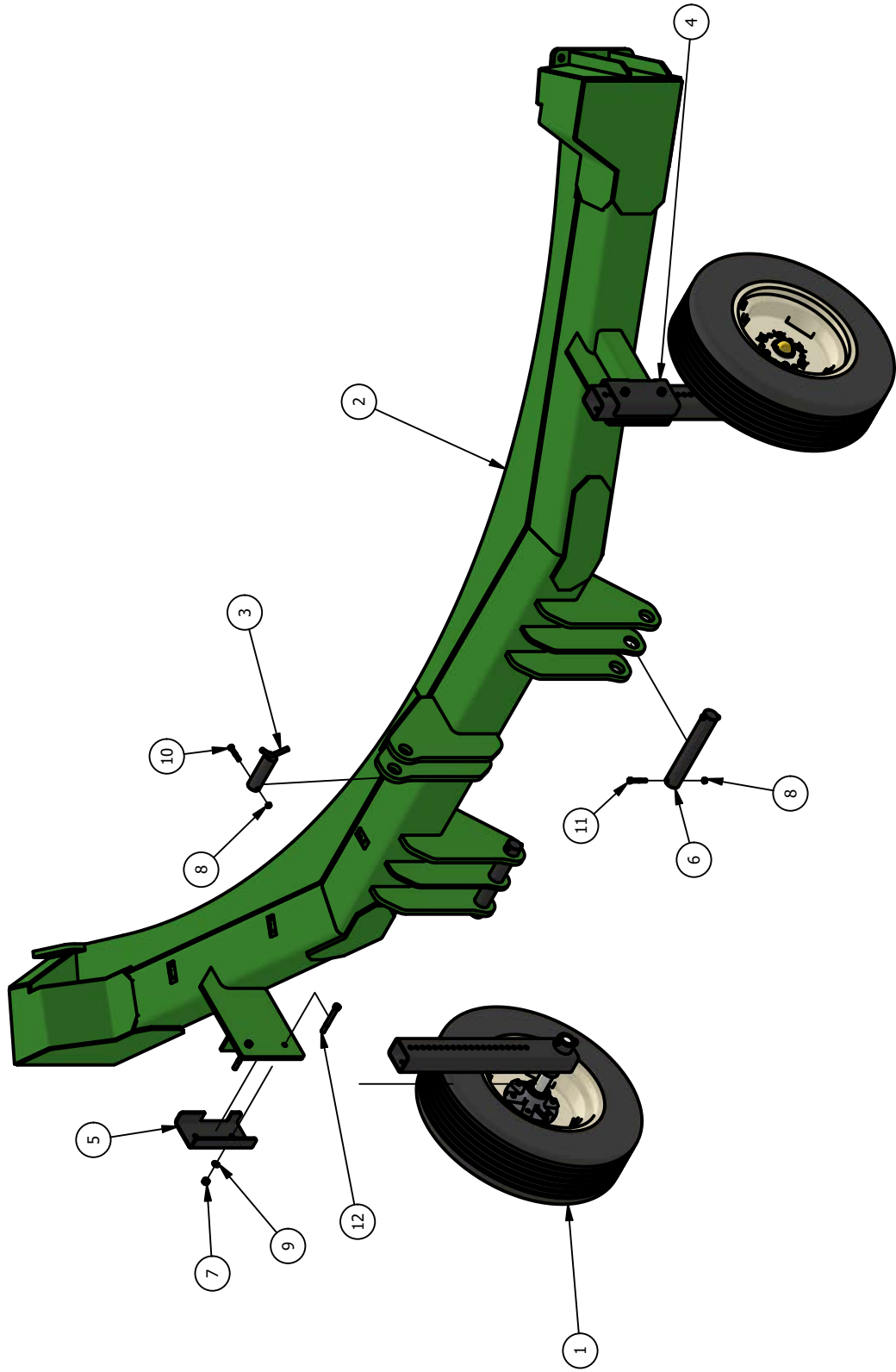
| ITEM | ITEM QTY | PART NUMBER | DESCRIPTION                                      |
|------|----------|-------------|--|
| 1    | 1        | 83-004-63   | 6300, 9400 SWITCH PLOW - REAR GAUGE WHEEL BUNDLE |
| 2    | 1        | 84-100-65   | 7 BOTTOM TOOLBAR ASSEMBLY                        |
| 3    | 1        | 84-111-67   | 1 BOTTOM EXTENSION                               |

# 84-100-65 7 BOTTOM TOOLBAR ASSEMBLY



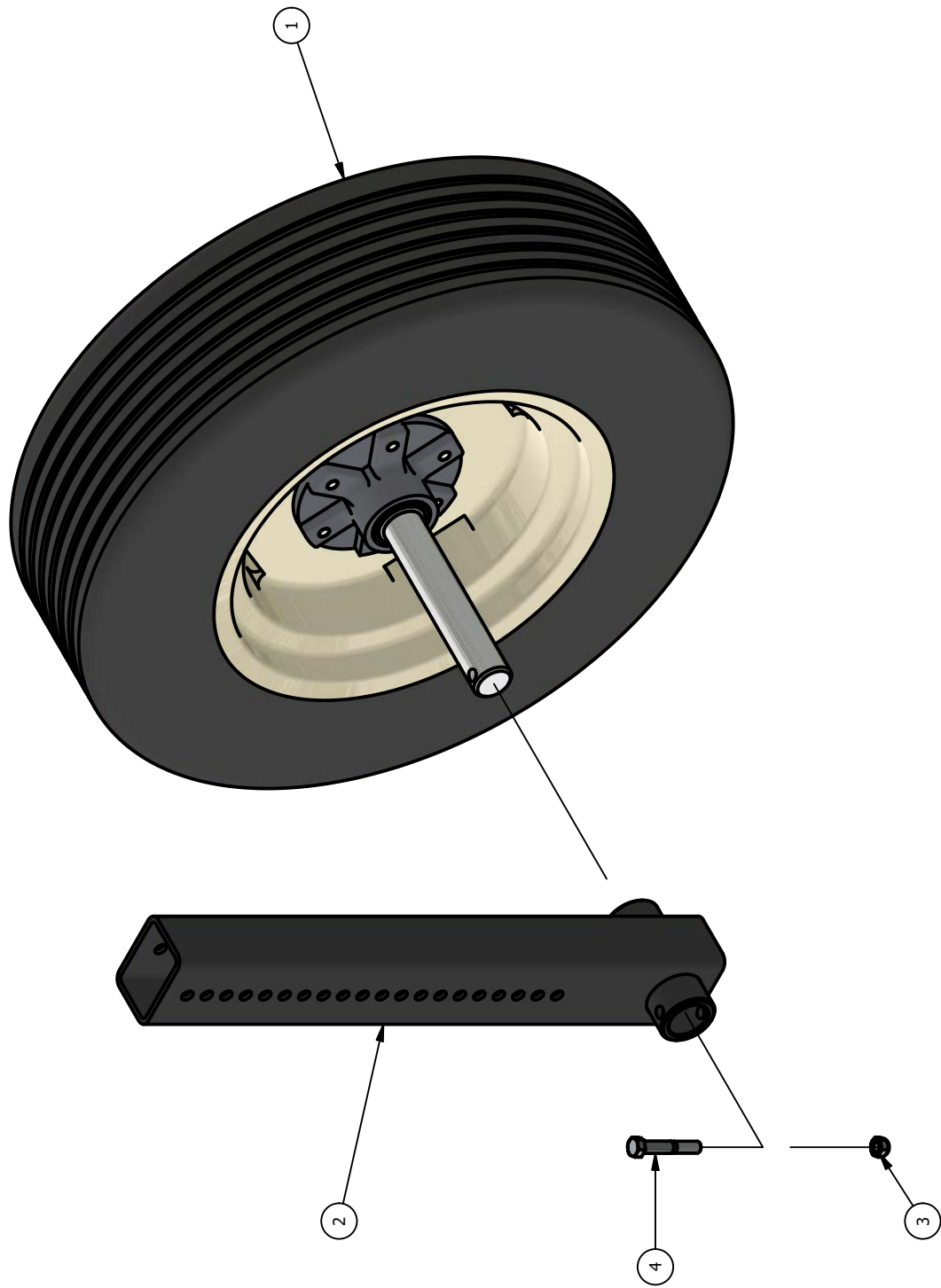
| ITEM | ITEM QTY | PART NUMBER | DESCRIPTION  |
|------|----------|-------------|--|
| 1    | 11       | 0812-2400   | HEX NUT, 3/4                                       |
| 2    | 2        | 1412-1200   | LOCK NUT, 3/8 STOVER ZP                            |
| 3    | 11       | 1602-2400   | LOCK WASHER, 3/4 ZP                                |
| 4    | 2        | 2816-1212   | HEX HEAD BOLT, 3/8 X 1 1/4 GR5 ZP                  |
| 5    | 11       | 2818-2424   | HEX HEAD BOLT, 3/4 X 2 1/2 GR8                     |
| 6    | 1        | 72-001-67   | 6300 SWITCH PLOW - FRONT BOTTOM KIT                |
| 7    | 5        | 72-002-67   | 6300 SWITCH PLOW - FORWARD INTERMEDIATE BOTTOM KIT |
| 8    | 1        | 72-005-67   | 6300 SWITCH PLOW - FORWARD REAR BOTTOM KIT         |
| 9    | 1        | 84-104-67   | 6700 PIVOT PIN ASSEMBLY                            |
| 10   | 1        | 84-113-67   | ADJUSTABLE STOP ASSEMBLY                           |
| 11   | 1        | 85-104-65   | TOOL BAR WELDMENT                                  |
| 12   | 1        | 85-106-67   | PIVOT FRAME WELDMENT                               |

# 84-101-65 HITCH FRAME ASSEMBLY



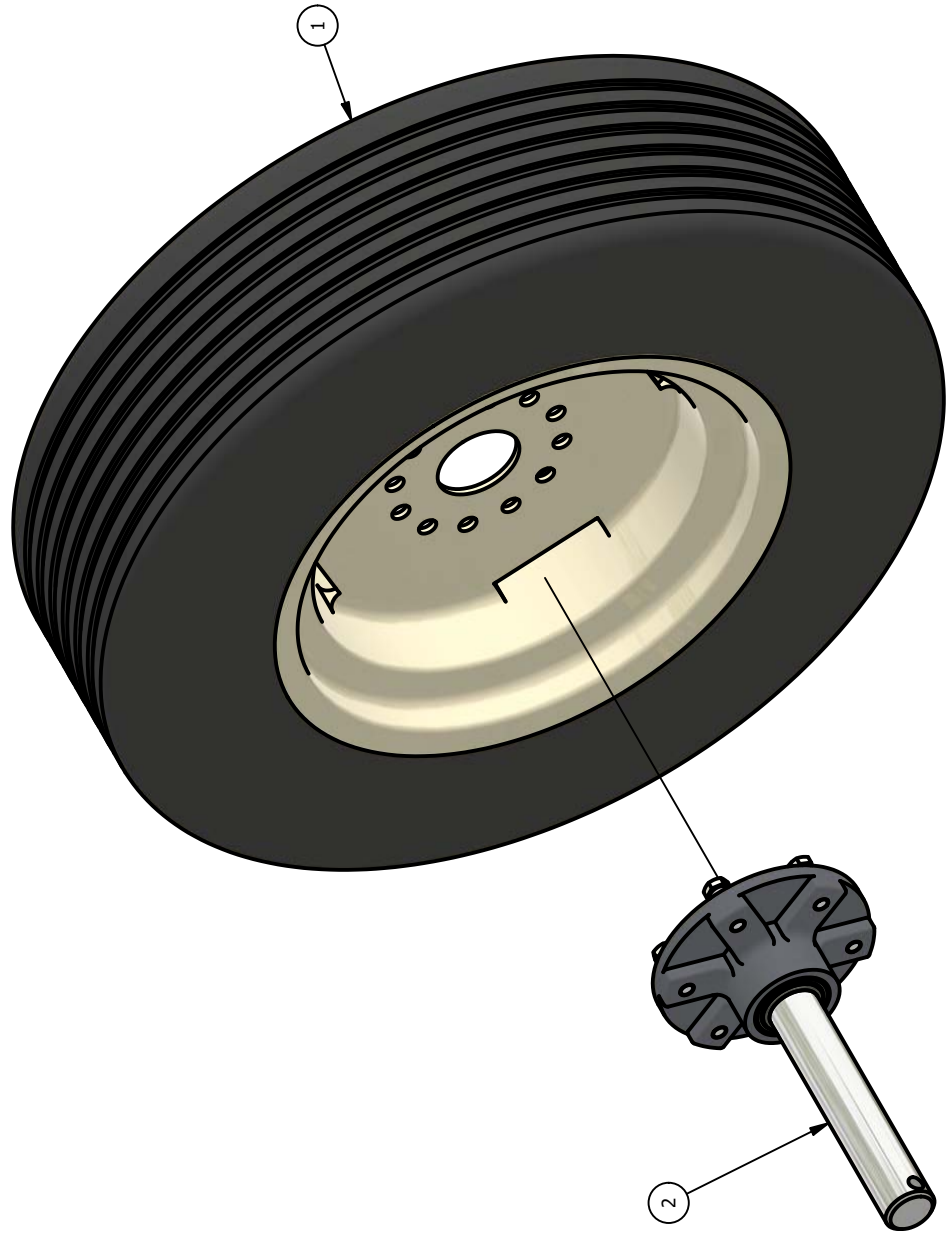
| ITEM | ITEM QTY | PART NUMBER | DESCRIPTION                        |
|------|----------|-------------|------------------------------------|
| 1    | 2        | 84-109-67   | FRONT GAUGE WHEEL ASSEMBLY         |
| 2    | 1        | 85-103-65   | HITCH FRAME WELDMENT               |
| 3    | 1        | 85-110-67   | UPPER HITCH PIN WELDMENT, CAT IV   |
| 4    | 1        | 93-131-67   | FRONT GAUGE WHEEL CLAMP PLATE ROAD |
| 5    | 1        | 93-135-67   | FRONT GAUGE WHEEL CLAMP PLATE CURB |
| 6    | 2        | 96-100-67   | LOWER HITCH PIN, CAT IV            |
| 7    | 4        | 0812-1600   | HEX NUT, 1/2                       |
| 8    | 5        | 1412-1200   | LOCK NUT, 3/8 STOVER ZP            |
| 9    | 4        | 1602-1600   | LOCK WASHER, 1/2 ZP                |
| 10   | 1        | 2816-1222   | HEX HEAD BOLT, 3/8 X 2 1/4 GR5 ZP  |
| 11   | 4        | 2816-1224   | HEX HEAD BOLT, 3/8 X 2 1/2 GR5 ZP  |
| 12   | 4        | 2816-1644   | HEX HEAD BOLT, 1/2 X 4 1/2 GR5 ZP  |

# 84-109-67 FRONT GAUGE WHEEL ASSEMBLY



| ITEM | ITEM QTY | PART NUMBER | DESCRIPTION                           |
|------|----------|-------------|---------------------------------------|
| 1    | 1        | 84-106-67   | TIRE / WHEEL - HUB / SPINDLE ASSEMBLY |
| 2    | 1        | 85-113-67   | FRONT GAUGE WHEEL ARM                 |
| 3    | 1        | 1412-1600   | LOCK NUT, 1/2 STOVER ZP               |
| 4    | 1        | 2816-1630   | HEX HEAD BOLT, 1/2 X 3 GR5 ZP         |

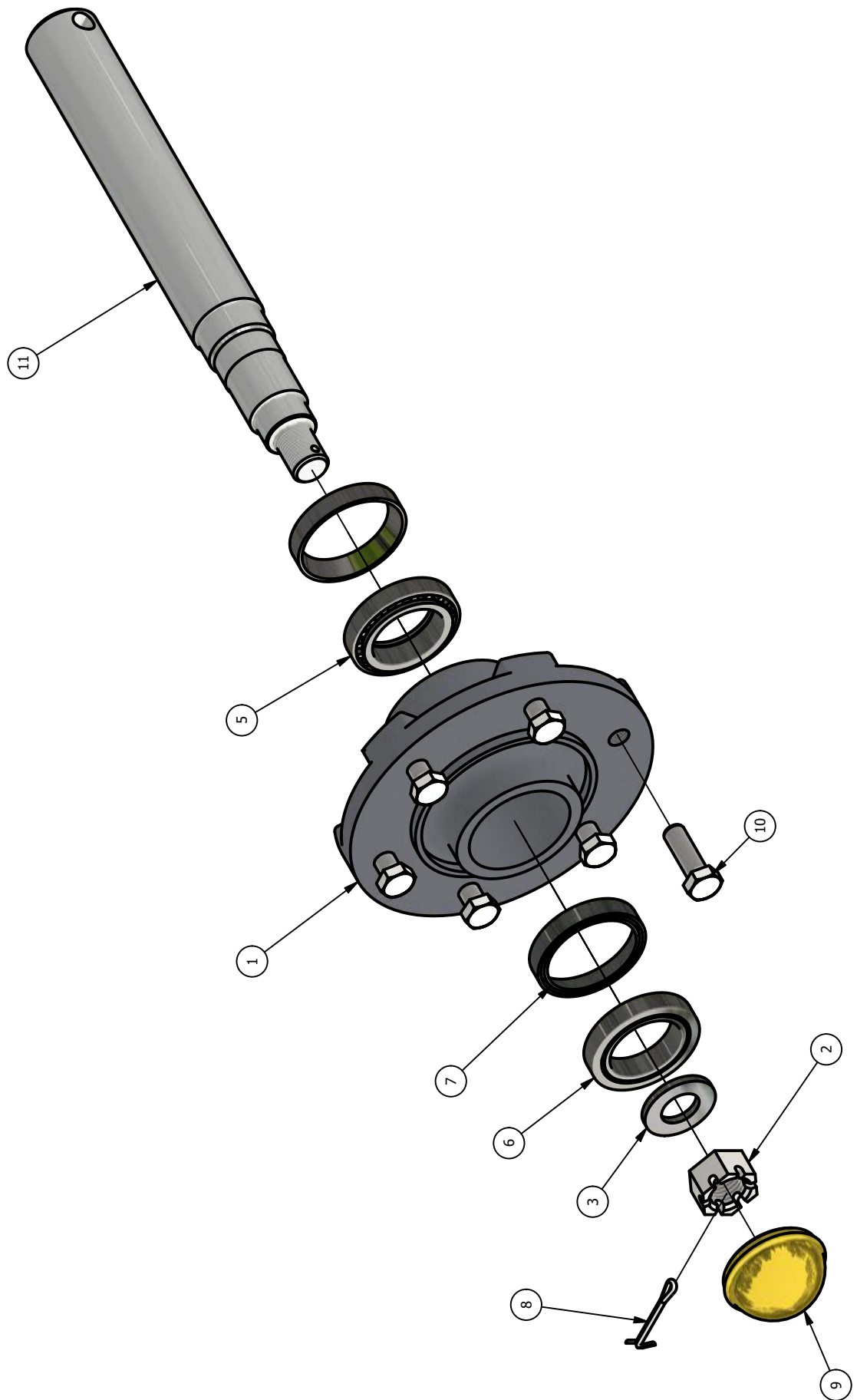
84-106-67  
TIRE / WHEEL - HUB / SPINDLE ASSEMBLY





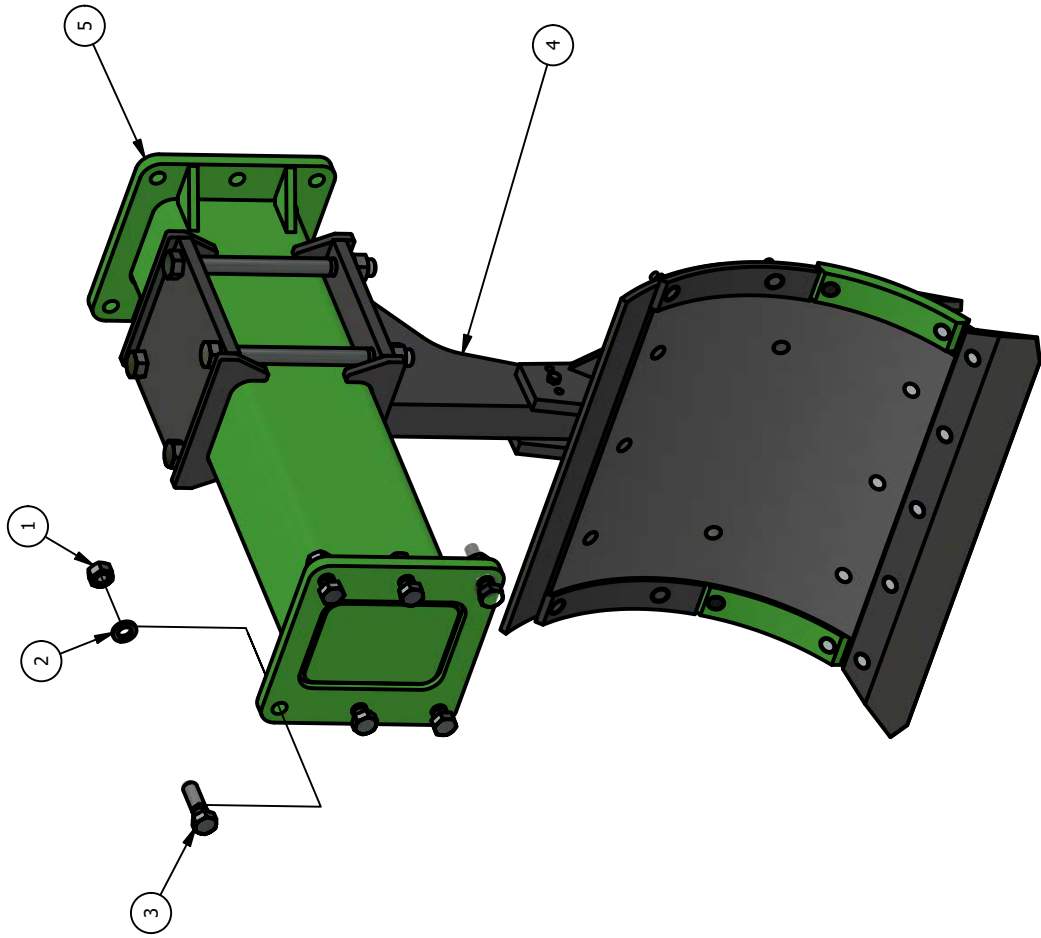
| ITEM | ITEM QTY | PART NUMBER | DESCRIPTION            |
|------|----------|-------------|------------------------|
| 1    | 1        | 84-2804-01  | TIRE / WHEEL ASSEMBLY  |
| 2    | 1        | 84-108-67   | HUB / SPINDLE ASSEMBLY |

# 84-108-67 HUB / SPINDLE ASSEMBLY



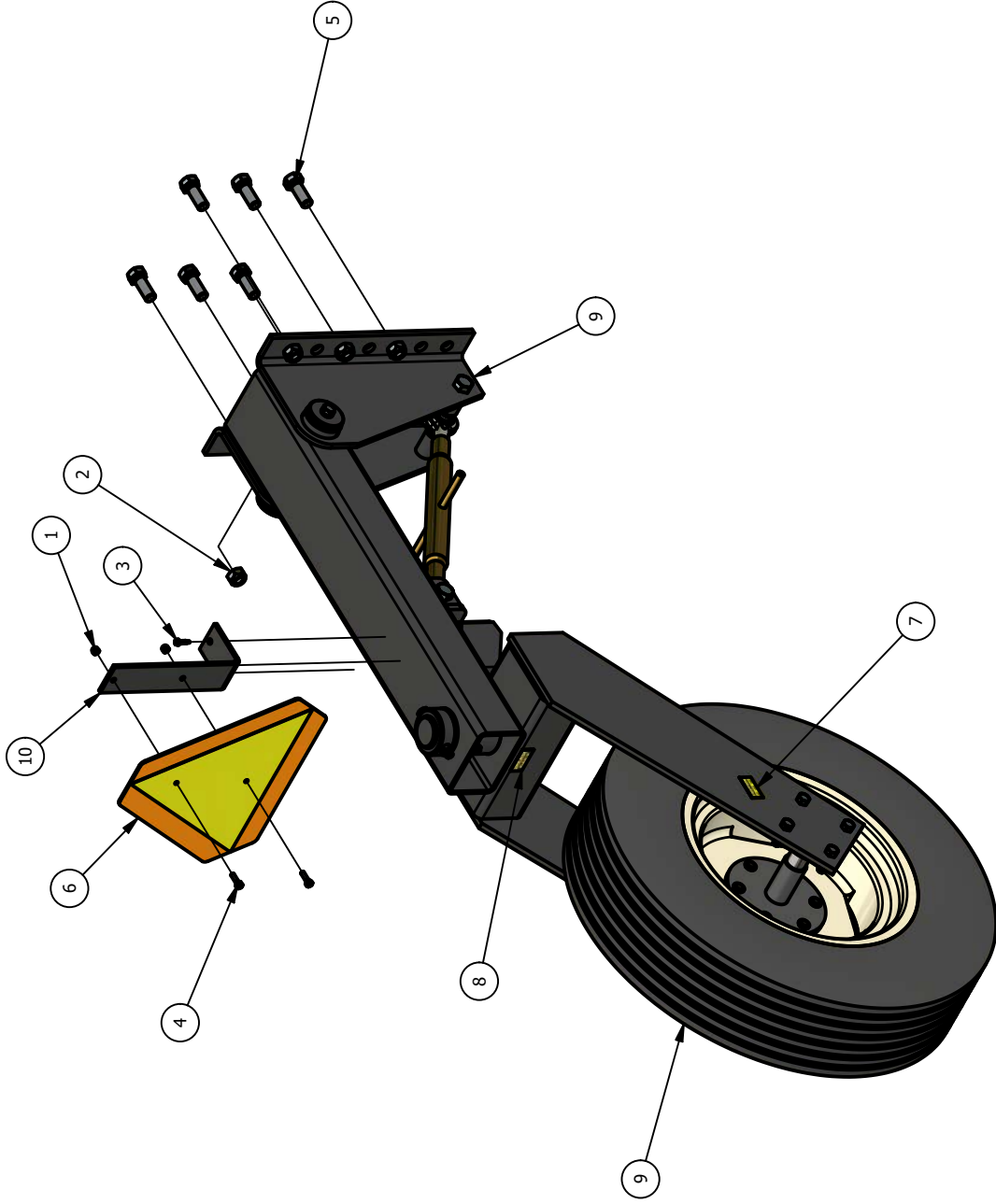
| ITEM | ITEM QTY | PART NUMBER | DESCRIPTION                      |
|------|----------|-------------|----------------------------------|
| 1    | 1        | 77-001-02   | 6 BOLT HUB W/RACES - PICTORIAL   |
| 2    | 1        | 77-004-02   | SPINDLE NUT - PICTORIAL          |
| 3    | 1        | 77-005-02   | SPINDLE WASHER - PICTORIAL       |
| 4    | 1        | 77-006-02   | HUB SEAL - PICTORIAL             |
| 5    | 1        | 77-007-02   | INNER ROLLER BEARING - PICTORIAL |
| 6    | 1        | 77-008-02   | OUTER ROLLER BEARING - PICTORIAL |
| 7    | 1        | 77-010-02   | OUTER RACE - PICTORIAL           |
| 8    | 1        | 77-011-02   | COTTER PIN - PICTORIAL           |
| 9    | 1        | 77-012-02   | DUST CAP - PICTORIAL             |
| 10   | 6        | 77-013-02   | LUG BOLT 1/2-20 - PICTORIAL      |
| 11   | 1        | 96-104-67   | SPINDLE, 6700 FRONT GAUGE WHEEL  |

# 84-111-67 1 BOTTOM EXTENSION



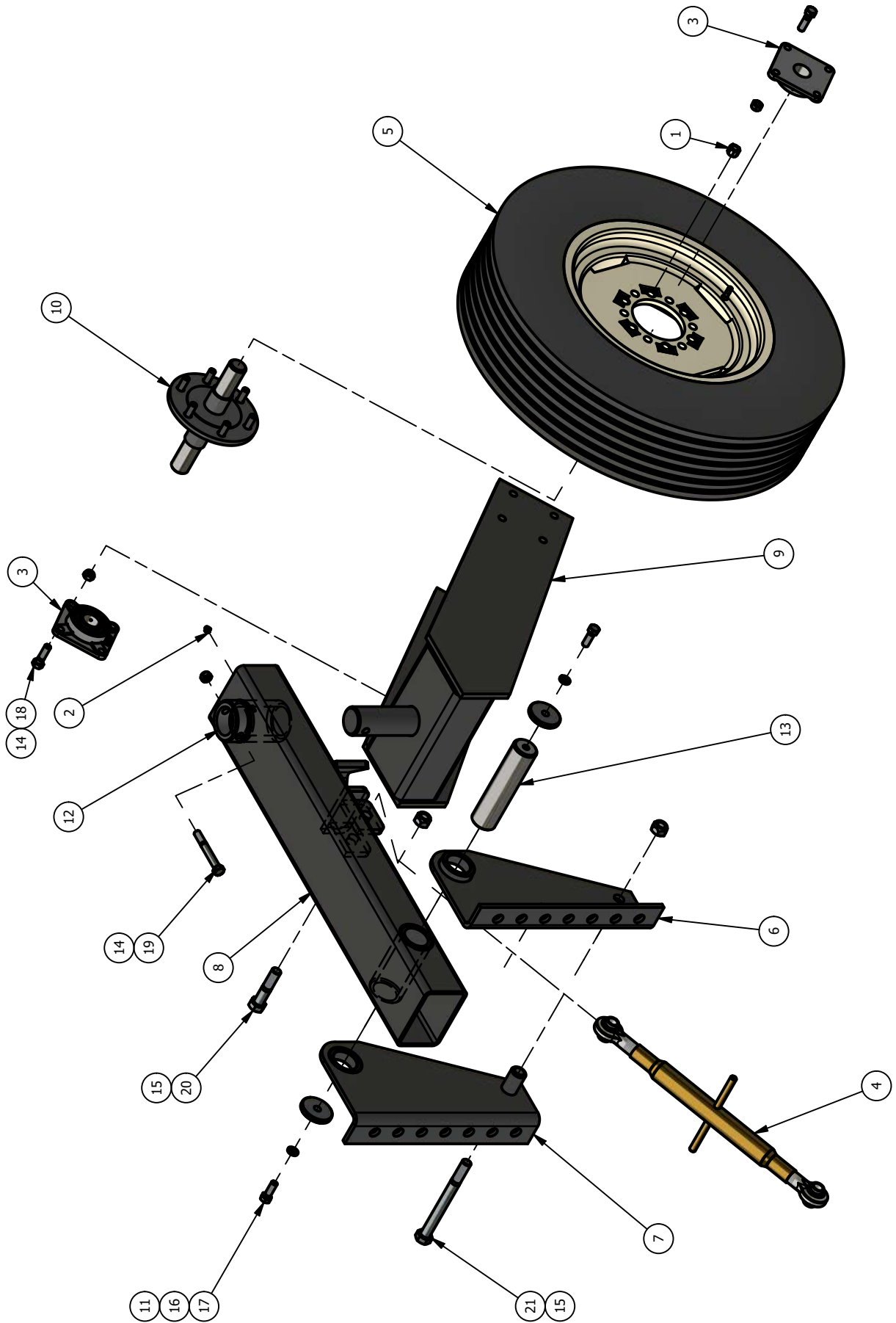
| ITEM | ITEM QTY | PART NUMBER | DESCRIPTION                                |
|------|----------|-------------|--|
| 1    | 6        | 0812-2400   | HEX NUT, 3/4                               |
| 2    | 6        | 1602-2400   | LOCK WASHER, 3/4 ZP                        |
| 3    | 6        | 2818-2424   | HEX HEAD BOLT, 3/4 X 2 1/2 GR8             |
| 4    | 1        | 72-005-67   | 6300 SWITCH PLOW - FORWARD REAR BOTTOM KIT |
| 5    | 1        | 85-119-67   | 1 BOTTOM EXTENSION                         |

83-004-63  
6300, 9400 SWITCH PLOW - REAR GAUGE WHEEL BUNDLE



| ITEM | ITEM QTY | PART NUMBER | DESCRIPTION                             |
|------|----------|-------------|---|
| 1    | 2        | 0912-0800   | LOCK NUT, 1/4 NYLOCK ZP                 |
| 2    | 6        | 1412-2400   | LOCK NUT, 3/4 STOVER ZP                 |
| 3    | 2        | 1913-1010   | SELF TAP SCREW, 12X1                    |
| 4    | 2        | 2816-0810   | HEX HEAD BOLT, 1/4 X 1 GR5 ZP           |
| 5    | 6        | 2816-2420   | HEX HEAD BOLT, 3/4 X 2 GR5 ZP           |
| 6    | 1        | 79-001-01M  | SLOW MOVING VEHICLE SIGN                |
| 7    | 2        | 79-005-DC   | 3" X 5" CAUTION - KEEP LUGS TIGHT DECAL |
| 8    | 1        | 79-006-DC   | 3" X 5" GREASE DAILY DECAL              |
| 9    | 1        | 84-1000-63  | REAR GAUGE WHEEL MAIN ASSEMBLY          |
| 10   | 1        | 93-1020-63  | SMV BRACKET                             |

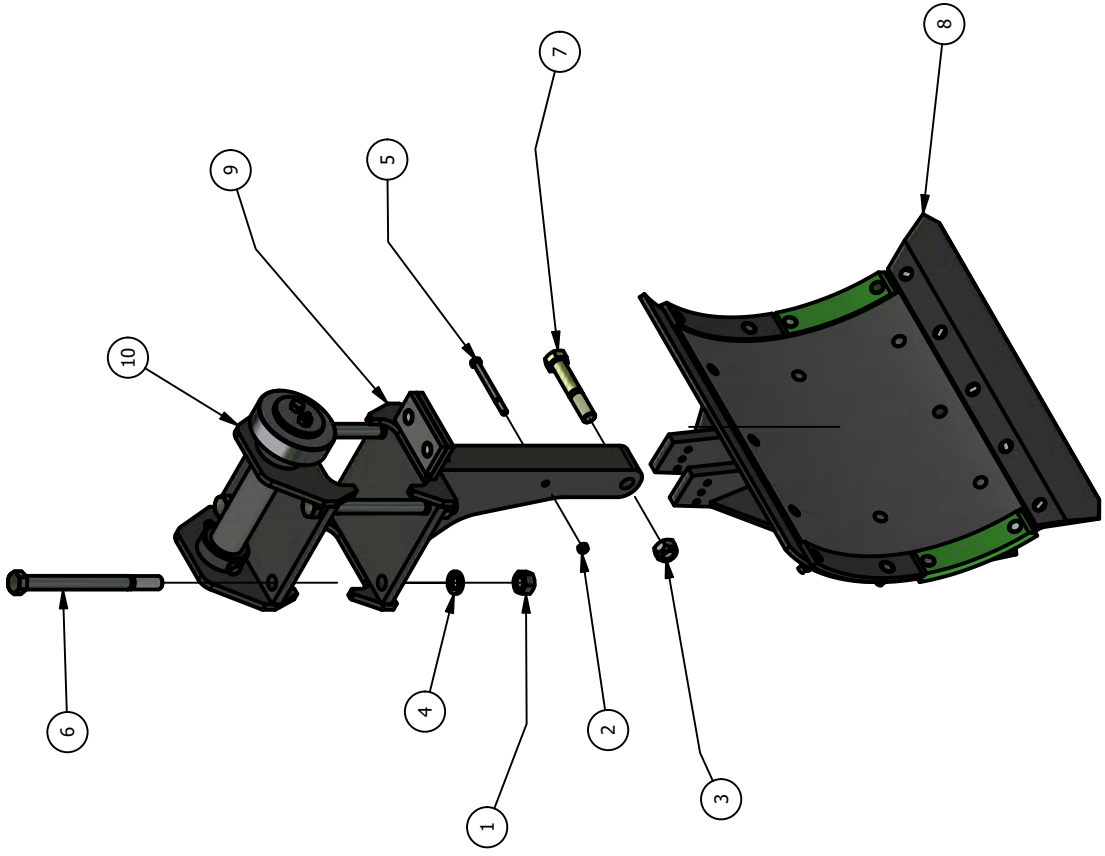
# 84-1000-63 REAR GAUGE WHEEL MAIN ASSEMBLY





| ITEM | ITEM QTY | PART NUMBER | DESCRIPTION  |
|------|----------|-------------|--|
| 1    | 6        | 77-024-88   | 1/2" 90° NUT, SAE GRADE 8                            |
| 2    | 1        | 79-005-38   | 1/8" NPT GREASE FITTING                              |
| 3    | 2        | 79-277-06   | 4 HOLE FLANGE BEARING, 1-7/16" BORE - PICTORIAL      |
| 4    | 1        | 79-297-82   | ADJUSTABLE TOP LINK                                  |
| 5    | 1        | 84-1001-63  | REAR GAUGE WHEEL - TIRE, WHEEL & VALVE STEM ASSEMBLY |
| 6    | 1        | 85-1001-63  | REAR GAUGE WHEEL MOUNT - LH WELDMENT                 |
| 7    | 1        | 85-1002-63  | REAR GAUGE WHEEL MOUNT - RH WELDMENT                 |
| 8    | 1        | 85-1003-63  | REAR GAUGE WHEEL ARM WELDMENT                        |
| 9    | 1        | 85-1004-63  | REAR GAUGE WHEEL YOKE WELDMENT                       |
| 10   | 1        | 85-1005-63  | GAUGE WHEEL HUB & AXLE WELDMENT                      |
| 11   | 2        | 93-1006-63  | GAUGE WHEEL ARM PIN CAP                              |
| 12   | 1        | 94-1002-63  | GAUGE WHEEL & PIVOT ROLLER RETAINER BUSHING          |
| 13   | 1        | 96-1000-63  | GAUGE WHEEL ARM PIN                                  |
| 14   | 9        | 1412-1600   | LOCK NUT, 1/2 STOVER ZP                              |
| 15   | 2        | 1412-2400   | LOCK NUT, 3/4 STOVER ZP                              |
| 16   | 2        | 1602-1600   | LOCK WASHER, 1/2 ZP                                  |
| 17   | 2        | 2816-1614   | HEX HEAD BOLT, 1/2 X 1 1/2 GR5 ZP                    |
| 18   | 8        | 2816-1616   | HEX HEAD BOLT, 1/2 X 1 3/4 GR5 ZP                    |
| 19   | 1        | 2816-1640   | HEX HEAD BOLT, 1/2 X 4 GR5 ZP                        |
| 20   | 1        | 2816-2434   | HEX HEAD BOLT, 3/4 X 3 1/2 GR5 ZP                    |
| 21   | 1        | 2816-2480   | HEX HEAD BOLT, 3/4 X 8 GR5 ZP                        |

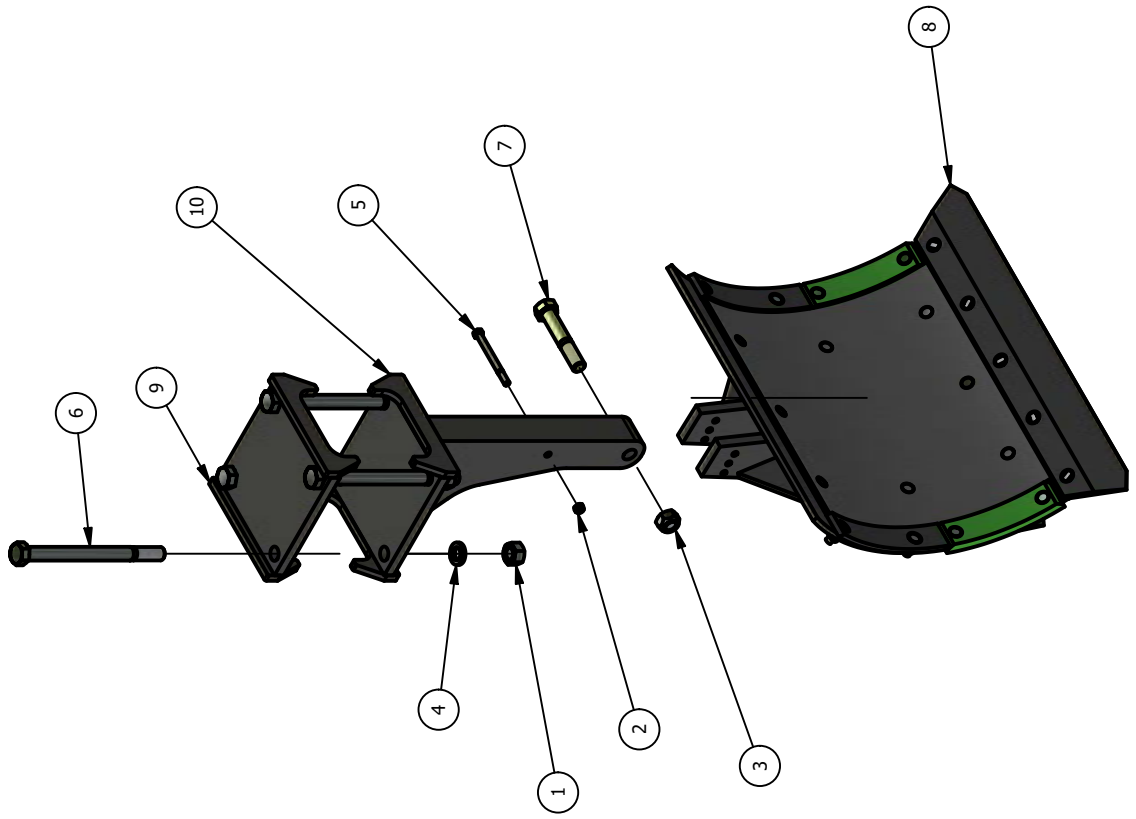
# 72-001-67 6300 SWITCH PLOW - FRONT BOTTOM KIT



| ITEM | ITEM QTY | PART NUMBER | DESCRIPTION                                      |
|------|----------|-------------|--|
| 1    | 4        | 0812-2800   | HEX NUT, 7/8                                     |
| 2    | 1        | 1412-1200   | LOCK NUT, 3/8 STOVER ZP                          |
| 3    | 1        | 1412-2800   | LOCK NUT, 7/8 STOVER ZP                          |
| 4    | 4        | 1602-2800   | LOCK WASHER, 7/8 ZP                              |
| 5    | 1        | 2816-1244   | HEX HEAD BOLT, 3/8 X 4 1/2 GR5 ZP                |
| 6    | 4        | 2816-2811   | 7/8-9 x 11 HEX HEAD BOLT                         |
| 7    | 1        | 2818-2850   | HEX HEAD BOLT, 7/8 X 5 GR 8                      |
| 8    | 1        | 83-003-36   | INTERMEDIATE MOLD BOARD W/ SHORT SLIDES - BUNDLE |
| 9    | 1        | 84-1007-63  | FRONT SHANK ASSEMBLY                             |
| 10   | 1        | 84-214-36   | TOOL BAR PIVOT ROLLER ASSEMBLY                   |

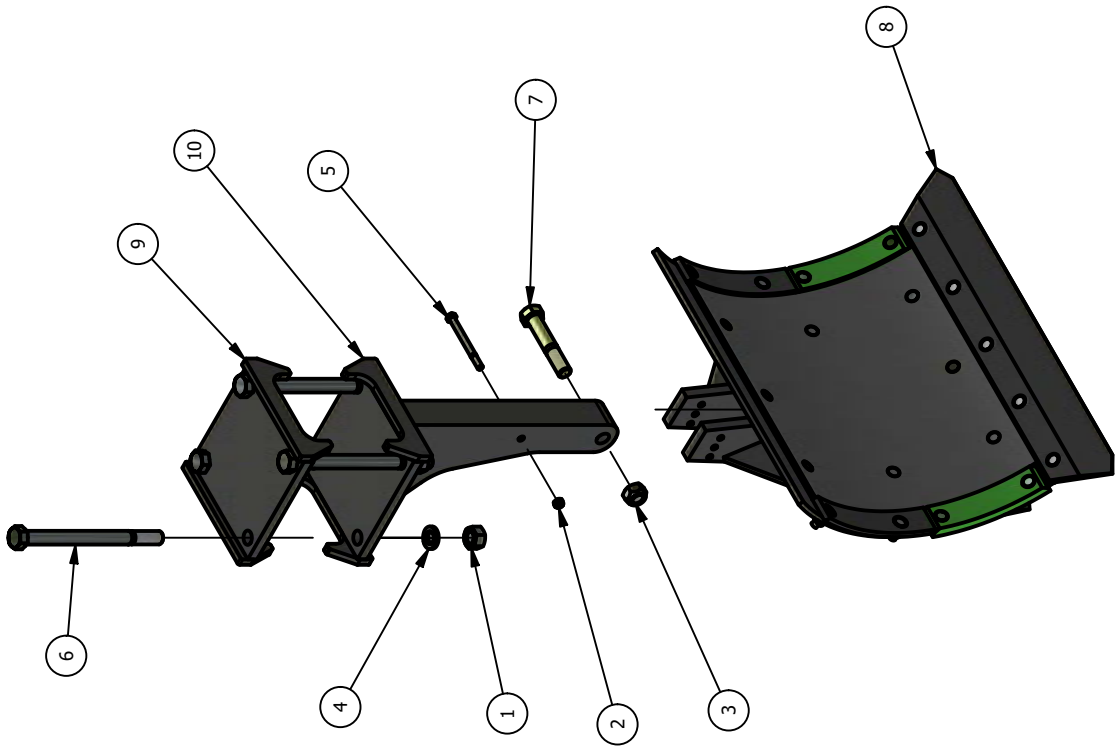
72-002-67

# 6300 SWITCH PLOW - FORWARD INTERMEDIATE BOTTOM KIT



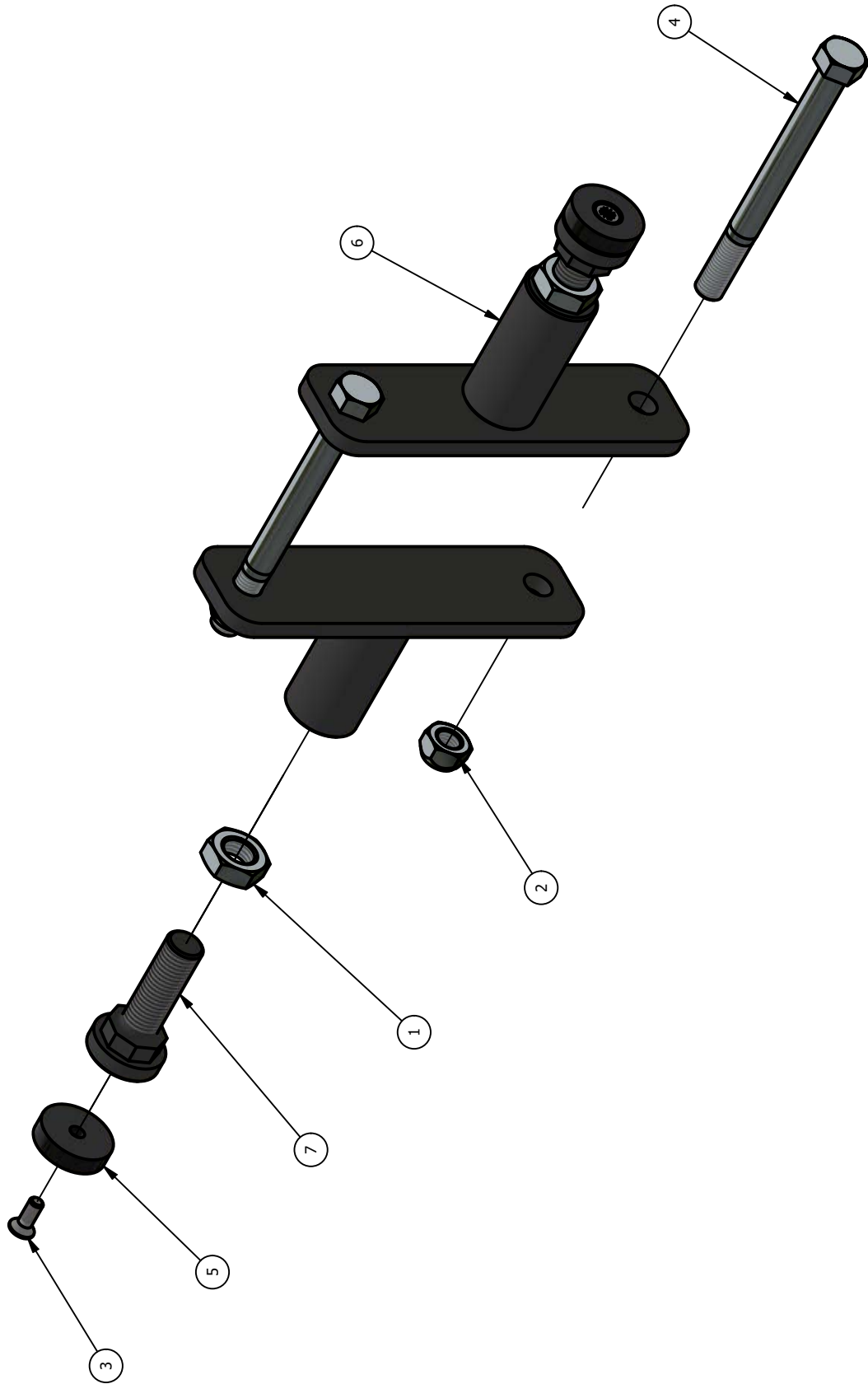
| ITEM | ITEM QTY | PART NUMBER | DESCRIPTION                                      |
|------|----------|-------------|--|
| 1    | 4        | 0812-2800   | HEX NUT, 7/8                                     |
| 2    | 1        | 1412-1200   | LOCK NUT, 3/8 STOVER ZP                          |
| 3    | 1        | 1412-2800   | LOCK NUT, 7/8 STOVER ZP                          |
| 4    | 4        | 1602-2800   | LOCK WASHER, 7/8 ZP                              |
| 5    | 1        | 2816-1244   | HEX HEAD BOLT, 3/8 X 4 1/2 GR5 ZP                |
| 6    | 4        | 2816-2811   | 7/8-9 x 11 HEX HEAD BOLT                         |
| 7    | 1        | 2818-2850   | HEX HEAD BOLT, 7/8 X 5 GR 8                      |
| 8    | 1        | 83-003-36   | INTERMEDIATE MOLD BOARD W/ SHORT SLIDES - BUNDLE |
| 9    | 1        | 85-017-36   | TOP PLATE WELDMENT, 6" TOOL BAR                  |
| 10   | 1        | 85-222-36   | INTERMEDIATE SHANK WELDMENT                      |

# 72-005-67 6300 SWITCH PLOW - FORWARD REAR BOTTOM KIT



| ITEM | ITEM QTY | PART NUMBER | DESCRIPTION                        |
|------|----------|-------------|------------------------------------|
| 1    | 4        | 0812-2800   | HEX NUT, 7/8                       |
| 2    | 1        | 1412-1200   | LOCK NUT, 3/8 STOVER ZP            |
| 3    | 1        | 1412-2800   | LOCK NUT, 7/8 STOVER ZP            |
| 4    | 4        | 1602-2800   | LOCK WASHER, 7/8 ZP                |
| 5    | 1        | 2816-1244   | HEX HEAD BOLT, 3/8 X 4 1/2 GR5 ZP  |
| 6    | 4        | 2816-2811   | 7/8-9 x 11 HEX HEAD BOLT           |
| 7    | 1        | 2818-2850   | HEX HEAD BOLT, 7/8 X 5 GR 8        |
| 8    | 1        | 83-206-36   | MOLD BOARD W/ LONG SLIDES - BUNDLE |
| 9    | 1        | 85-017-36   | TOP PLATE WELDMENT, 6" TOOL BAR    |
| 10   | 1        | 85-222-36   | INTERMEDIATE SHANK WELDMENT        |

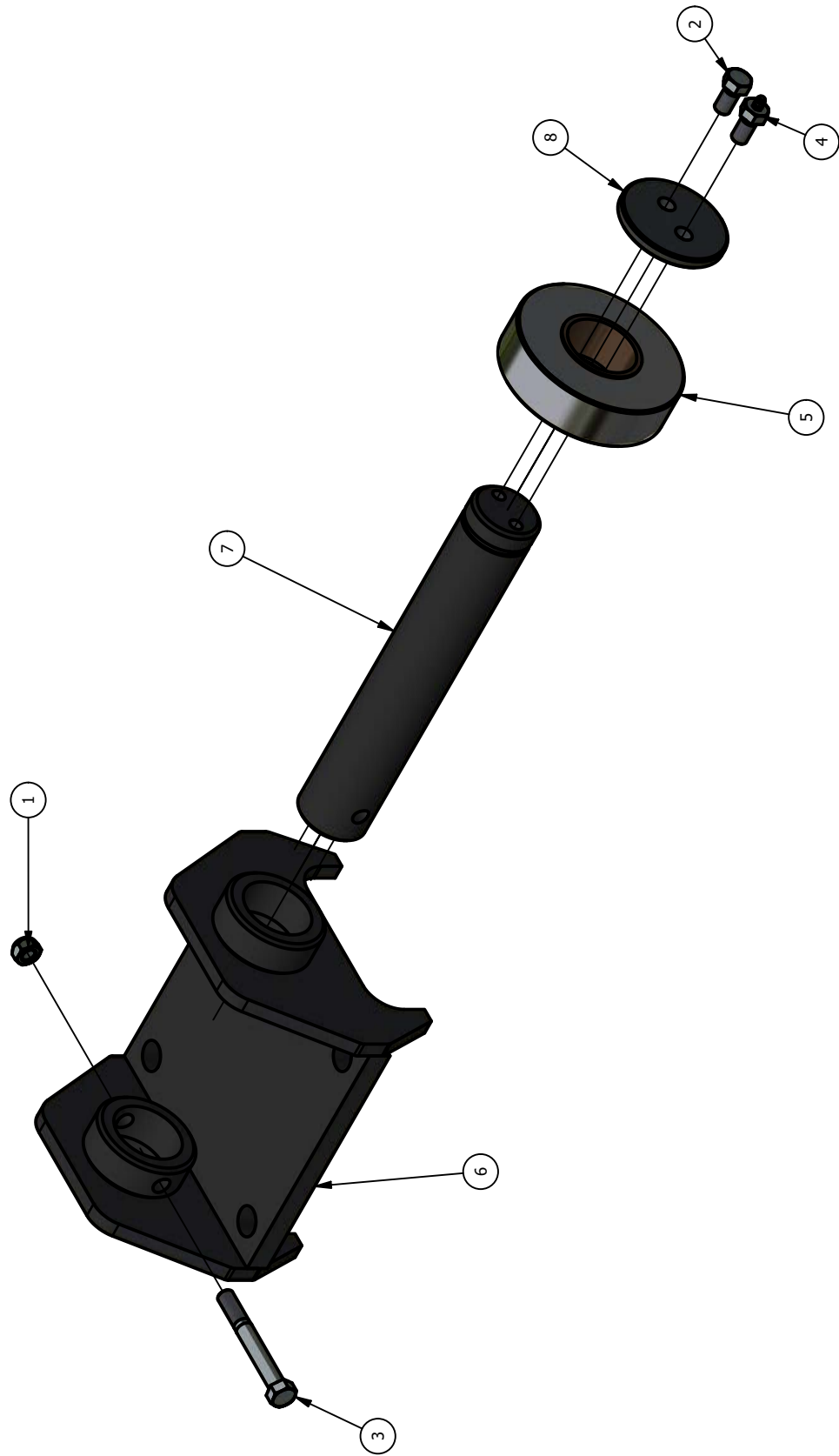
# 84-113-67 ADJUSTABLE STOP ASSEMBLY





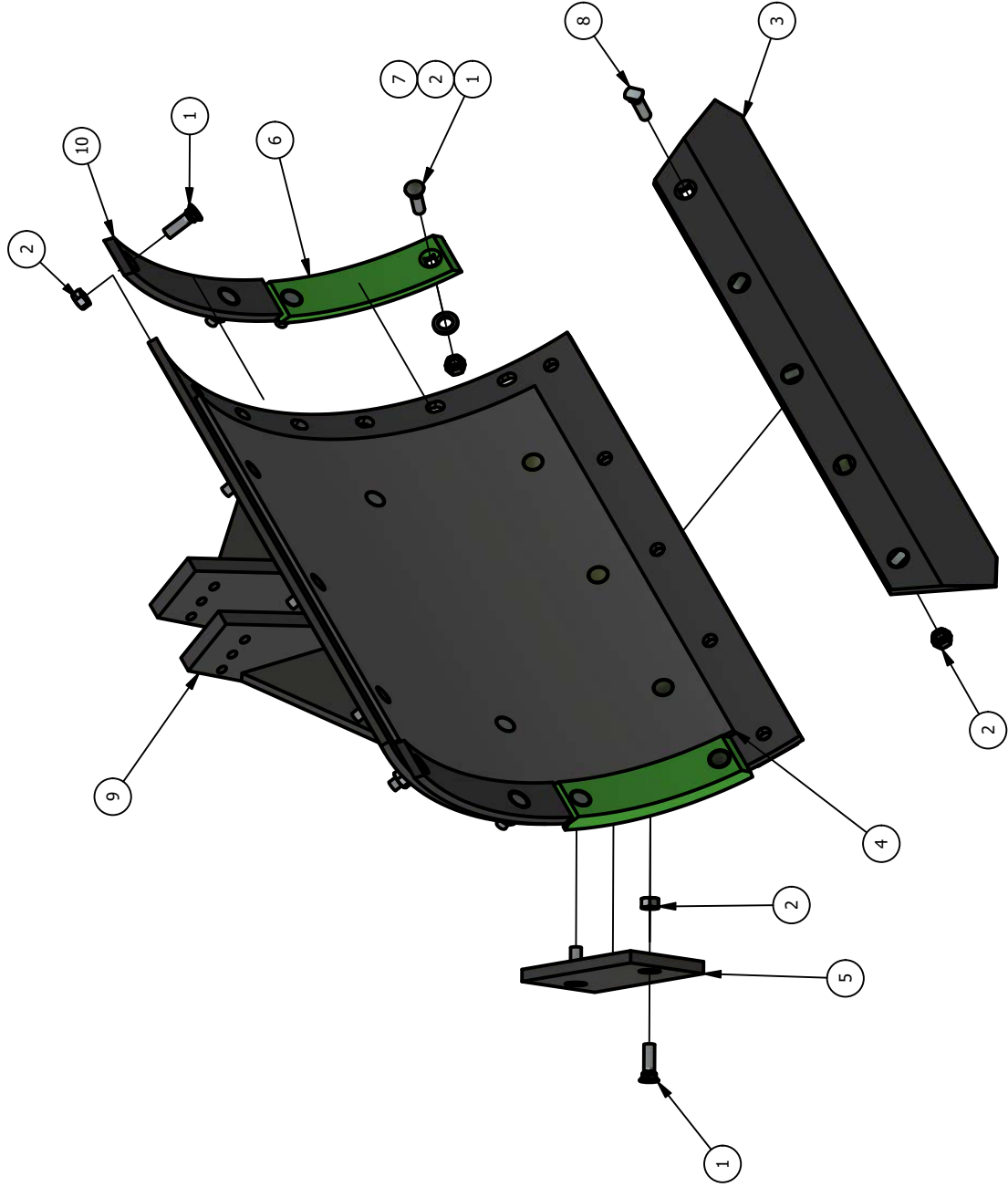
| ITEM | ITEM QTY | PART NUMBER | DESCRIPTION                      |
|------|----------|-------------|----------------------------------|
| 1    | 2        | 1012-3200   | 1-8 JAM NUT                      |
| 2    | 2        | 1412-2400   | LOCK NUT, 3/4 STOVER ZP          |
| 3    | 2        | 2216-1210   | COUNTERSUNK FLAT HEAD 3/8-16 X 1 |
| 4    | 2        | 2816-2480   | HEX HEAD BOLT, 3/4 X 8 GR5 ZP    |
| 5    | 2        | 77-001-67   | STOP PAD                         |
| 6    | 2        | 85-121-67   | ADJ TOOLBAR STOP WELDMENT        |
| 7    | 2        | 96-106-67   | TOOLBAR STOP ADJUSTMENT BAR      |

# 84-214-36 TOOL BAR PIVOT ROLLER ASSEMBLY



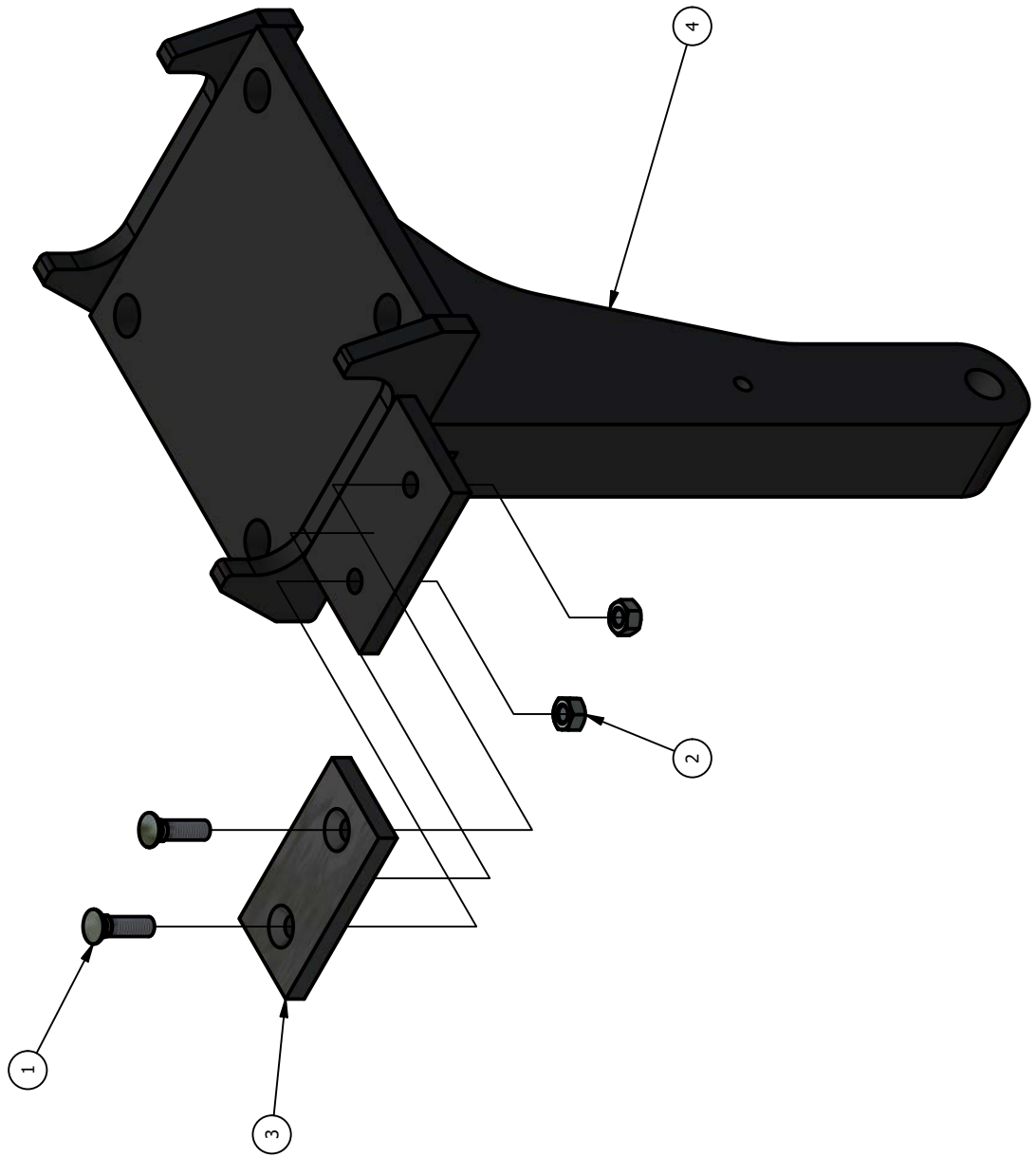
| ITEM | ITEM QTY | PART NUMBER | DESCRIPTION                              |
|------|----------|-------------|--|
| 1    | 1        | 1412-1600   | LOCK NUT, 1/2 STOVER ZP                  |
| 2    | 1        | 2816-1610   | HEX HEAD BOLT, 1/2 X 1 GR5 ZP            |
| 3    | 1        | 2816-1640   | HEX HEAD BOLT, 1/2 X 4 GR5 ZP            |
| 4    | 1        | 84-1015-63  | GREASE BOLT ASSEMBLY                     |
| 5    | 1        | 84-213-36   | ROLLER ASSEMBLY                          |
| 6    | 1        | 85-221-36   | PIVOT BAR ROLLER MOUNTING PLATE WELDMENT |
| 7    | 1        | 96-204-36   | ROLLER SHAFT                             |
| 8    | 1        | 96-205-36   | PIVOT ROLLER PIN CAP                     |

# 83-003-36 INTERMEDIATE MOLD BOARD W/ SHORT SLIDES - BUNDLE



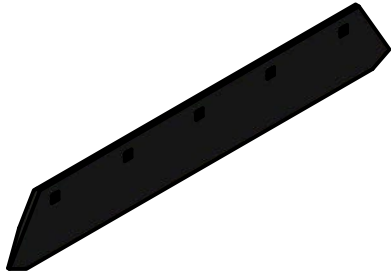
| ITEM | ITEM QTY | PART NUMBER | DESCRIPTION                        |
|------|----------|-------------|------------------------------------|
| 1    | 20       | 0315-1414   | PLOW BOLT, 7/16x1-1/2 Gr5          |
| 2    | 25       | 0812-1400   | HEX NUT, 7/16                      |
| 3    | 1        | 79-006-36   | PLOW SHARE - HEAT TREATED          |
| 4    | 1        | 79-201-36   | 1/4" UHMW PLASTIC WING             |
| 5    | 2        | 79-204-36   | SMALL SLIDE - MULTI LIFE           |
| 6    | 2        | 79-208-36   | LOWER WEAR SHIN                    |
| 7    | 4        | 79-218-36   | OICW - RUBBER WASHER               |
| 8    | 5        | 79-483-36   | PLOW BOLT, 7/16 x 1 3/4, CLIP HEAD |
| 9    | 1        | 85-006-36   | MOLD BOARD WELDMENT                |
| 10   | 2        | 98-207-36   | UPPER WEAR SHIN                    |

# 84-1007-63 FRONT SHANK ASSEMBLY



| ITEM | ITEM QTY | PART NUMBER | DESCRIPTION                    |
|------|----------|-------------|--------------------------------|
| 1    | 2        | 0315-1414   | PLOW BOLT, 7/16x1-1/2 Gr5      |
| 2    | 2        | 0812-1400   | HEX NUT, 7/16                  |
| 3    | 1        | 79-1002-63  | SLIDE WEAR PAD FOR FRONT SHANK |
| 4    | 1        | 85-224-36   | FRONT SHANK WELDMENT           |

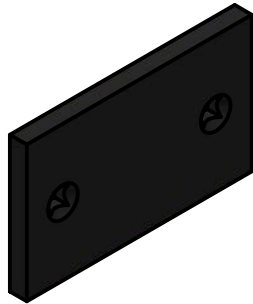
79-006-36  
PLOW SHARE - HEAT TREATED



79-201-36  
1/4" UHMW PLASTIC WING



79-204-36  
SMALL SLIDE - MULTI LIFE



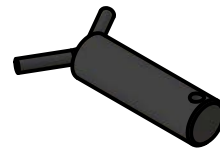
79-208-36  
LOWER WEAR SHIN



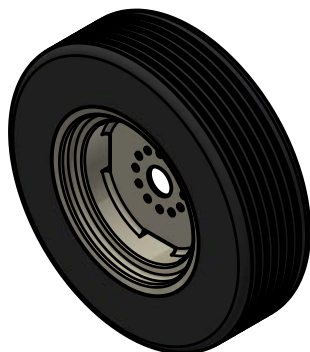
79-218-36  
OICW - RUBBER WASHER



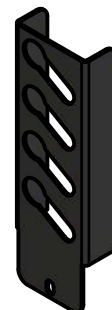
85-110-67  
UPPER HITCH PIN WELDMENT, CAT IV



84-2804-01  
TIRE / WHEEL ASSEMBLY



93-095-55  
HYDRAULIC HOSE END HOLDER





93-131-67  
FRONT GAUGE WHEEL CLAMP PLATE ROAD



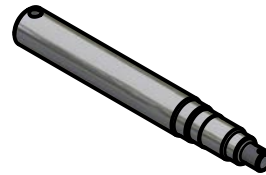
93-135-67  
FRONT GAUGE WHEEL CLAMP PLATE CURB



96-100-67  
LOWER HITCH PIN, CAT IV



96-104-67  
SPINDLE, 6700 FRONT GAUGE WHEEL



79-204-36  
SMALL SLIDE - MULTI LIFE



79-205-36  
LONG SLIDE - MULTI-LIFE

