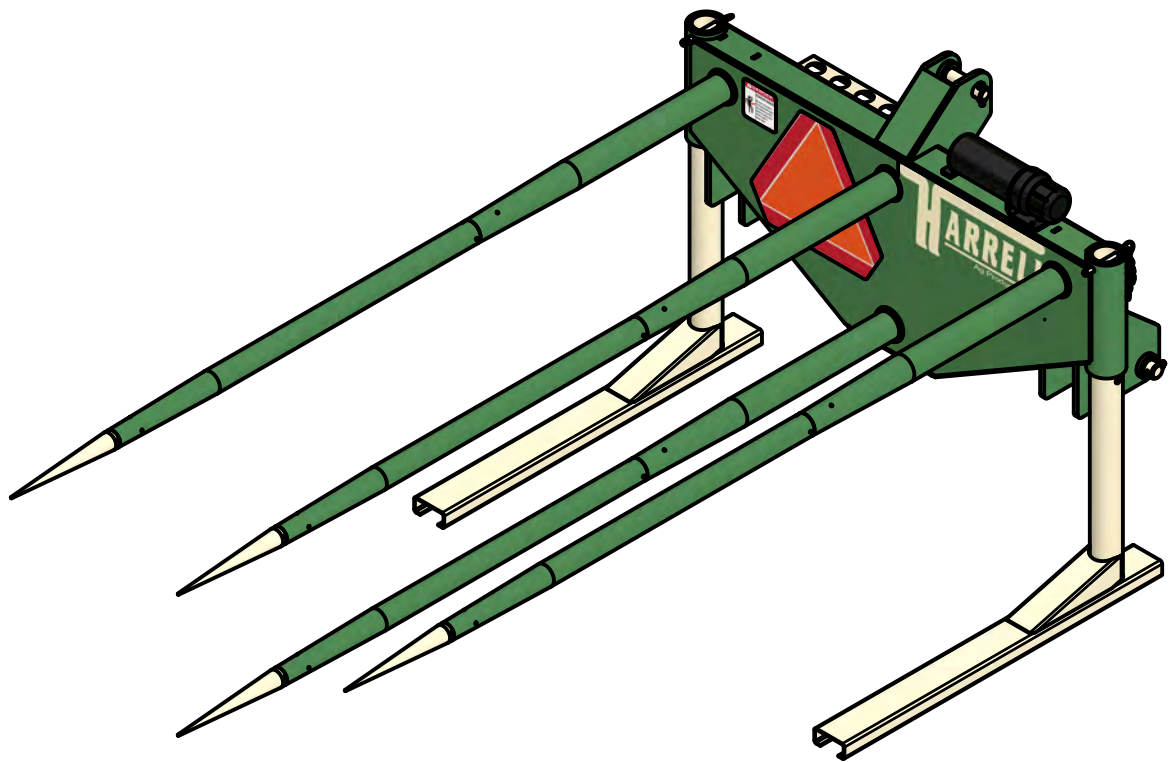




SERIES 43 BALE SPEAR



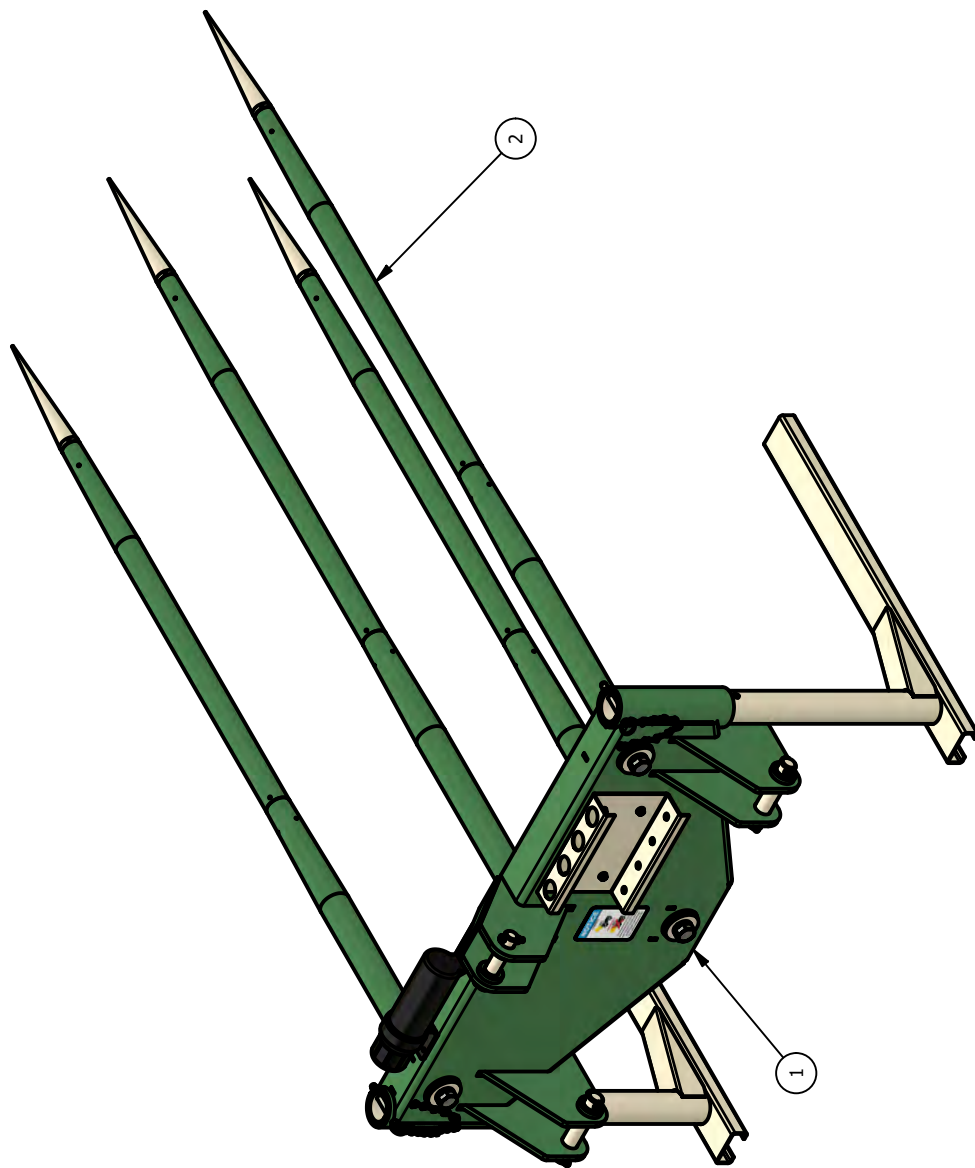
216 INDUSTRIAL BLVD., RAMP 2
BAINBRIDGE, GA 39817
(229) 246-0350
www.harrellag.com

43-PM-002-01

TABLE OF CONTENTS

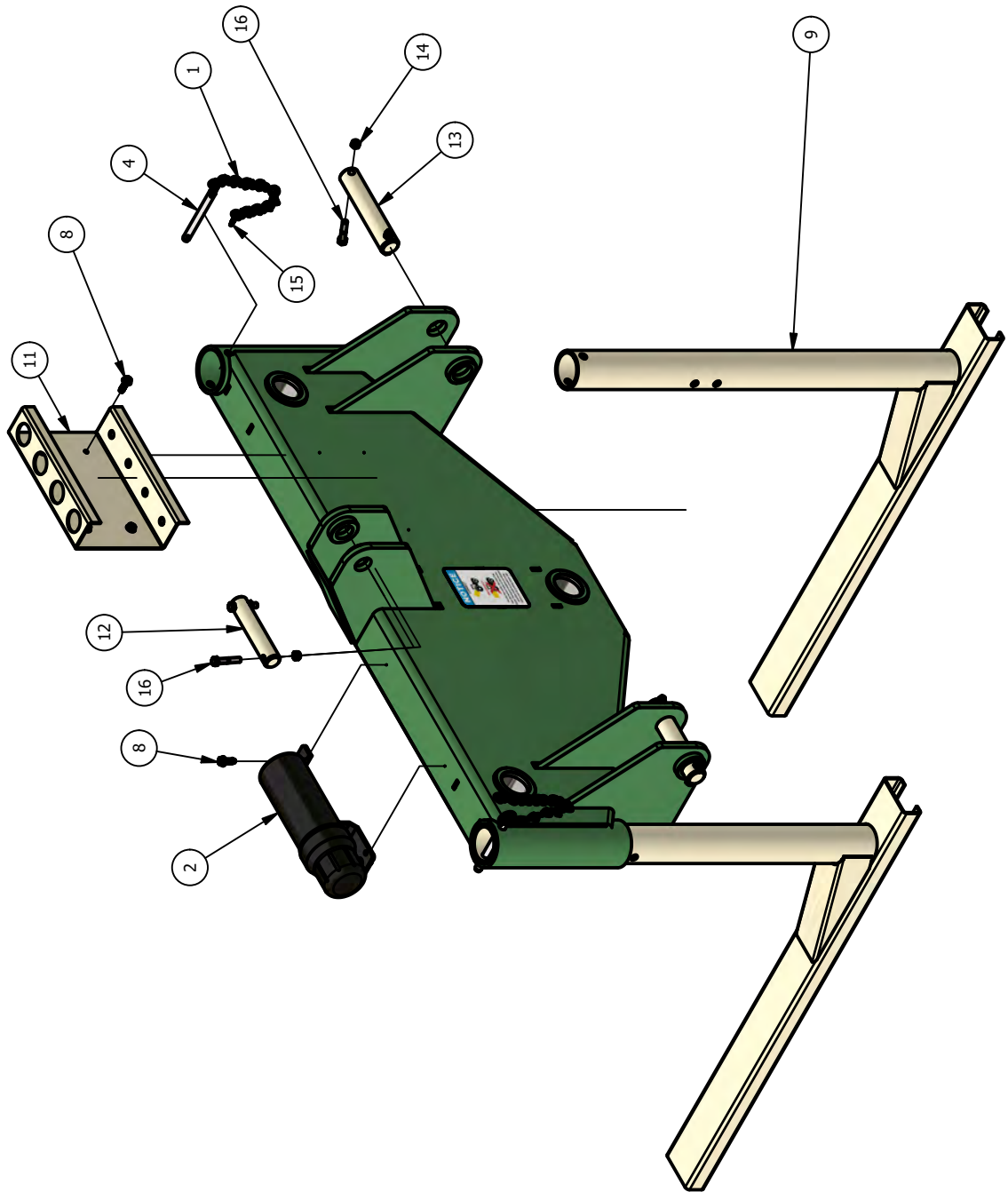
70-002-43..... BALE SPEAR, 4 PRONG..... 4
84-002-43..... BALE SPEAR BODY ASSEMBLY..... 6
83-001-43..... SPEAR KIT 8
84-001-43..... SPEAR ASSEMBLY 10
MISC PARTS.....12

70-002-43
BALE SPEAR, 4 PRONG



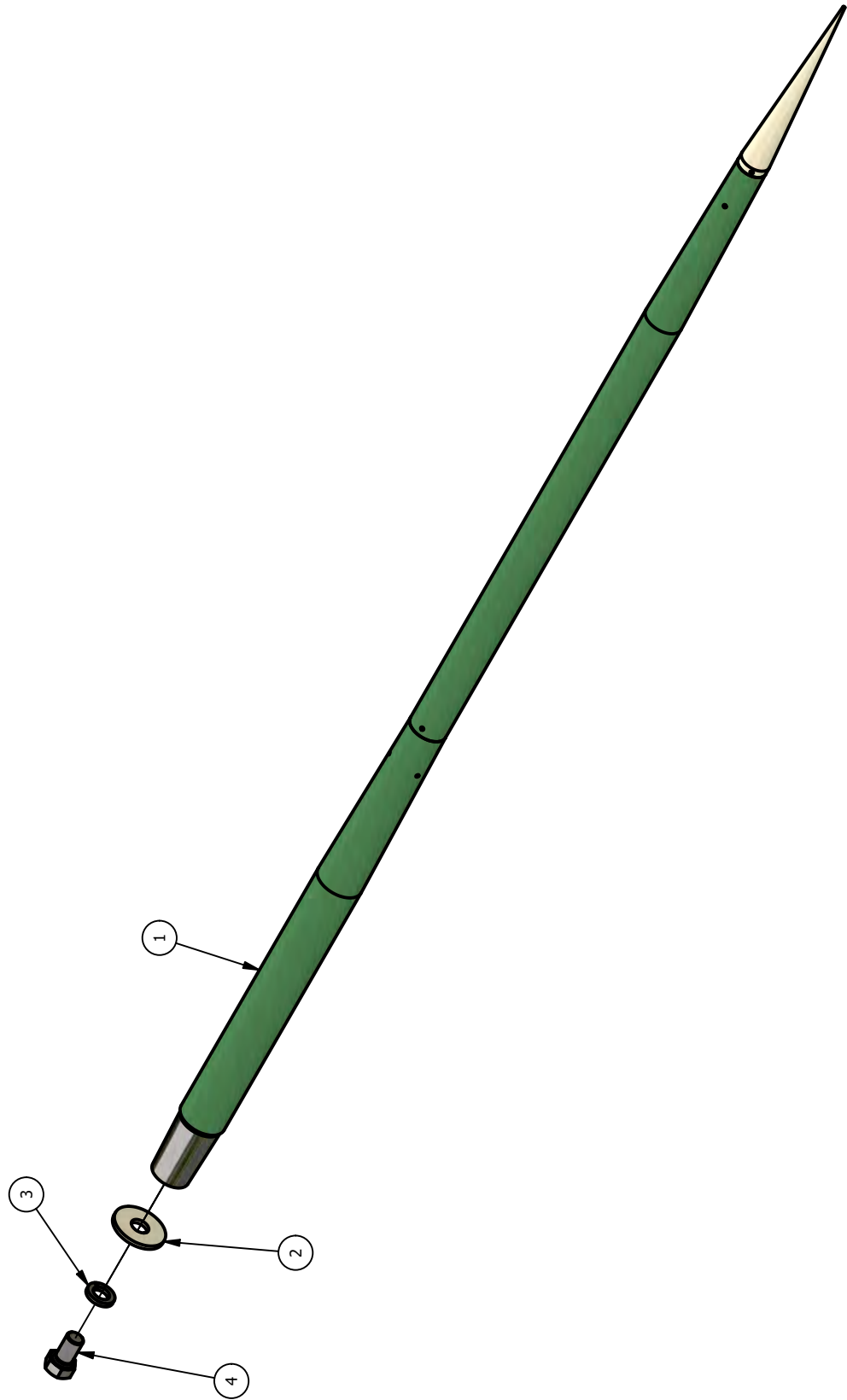
ITEM	ITEM QTY	PART NUMBER	DESCRIPTION
1	1	84-002-73	BALE SPEAR BODY ASSEMBLY
2	4	83-001-43	SPEAR KIT

84-002-73 BALE SPEAR BODY ASSEMBLY



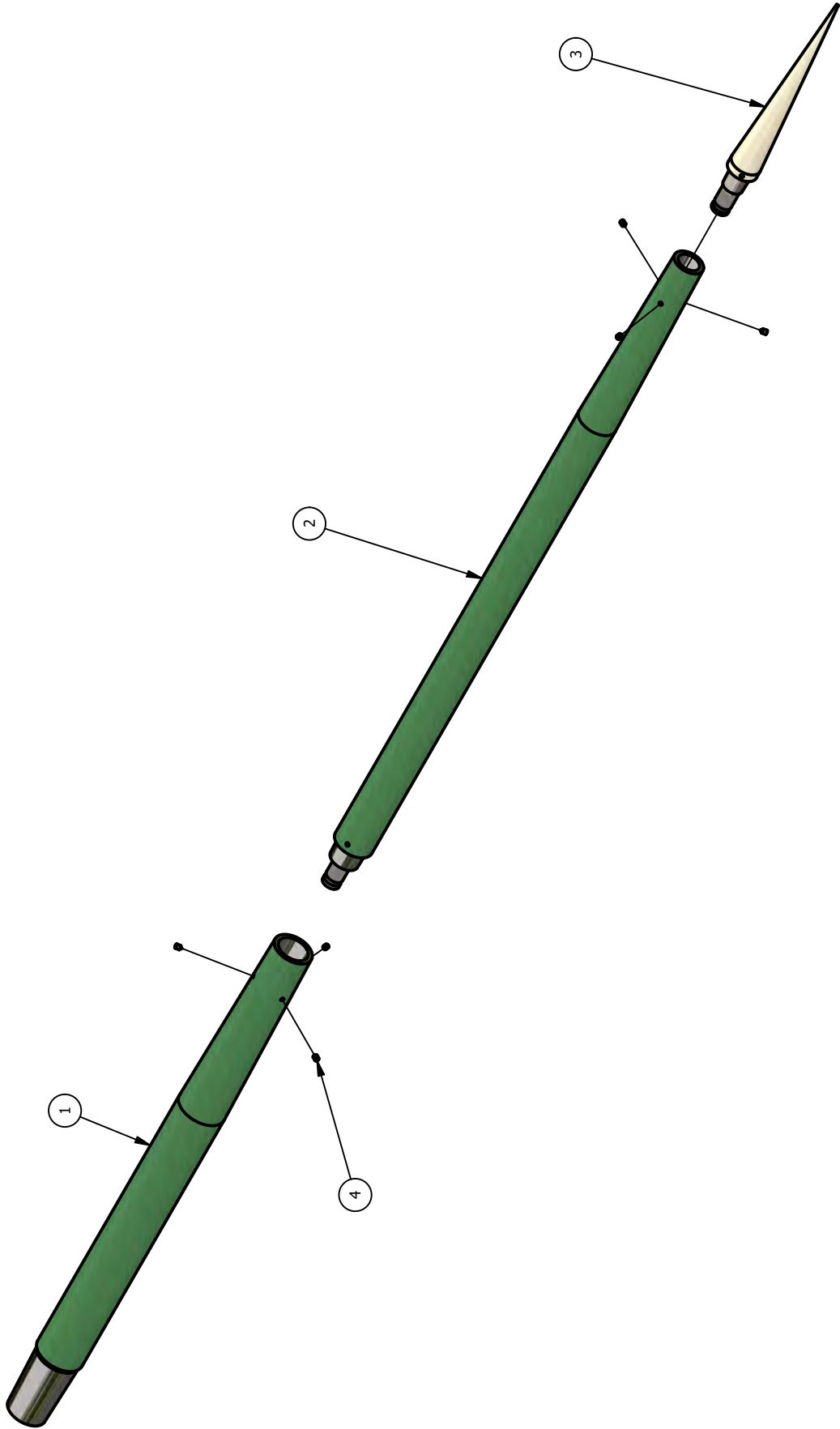
ITEM	ITEM QTY	PART NUMBER	DESCRIPTION
1	2	78-001-43	PIN RETENTION CHAIN
2	1	79-001-00	MANUAL CANISTER
3	1	79-001-01	SLOW MOVING VEHICLE DECAL
4	2	79-001-43	1/2 x 4 PUSH PIN
5	1	79-009-DC	HARRELL AG DECAL 8X18 TAN
6	1	79-014-DC	NOTICE SPEAR OPERATION
7	1	79-015-DC	DANGER PIERCING HAZARD
8	6	79-800-01	5/16-18 x 1 WASHERED HEX HEAD w/ SLOTTED DRIVE, CUTTING, ZP
9	2	85-005-43	STAND LEG WELDMENT
10	1	85-007-43	CARRIER WELDMENT
11	1	93-012-43	SPEAR TIP CARRIER
12	1	96-006-43	UPPER HITCH PIN
13	2	96-007-43	LOWER HITCH PIN
14	6	1412-1200	LOCK NUT, 3/8 STOVER ZP
15	2	1913-1010	SELF TAP SCREW, 12X1
16	6	2816-1220	HEX HEAD BOLT, 3/8 X 2 GR5 ZP

83-001-43
SPEAR KIT



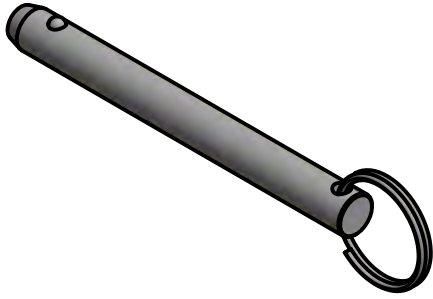
ITEM	ITEM QTY	PART NUMBER	DESCRIPTION
1	1	84-001-43	SPEAR ASSEMBLY
2	1	93-008-43	SHAFT CAP
3	1	1602-3200	LOCK WASHER, 1 ZP
4	1	2836-3216	1-14 x 1-3/4 HEX BOLT

84-001-43
SPEAR ASSEMBLY

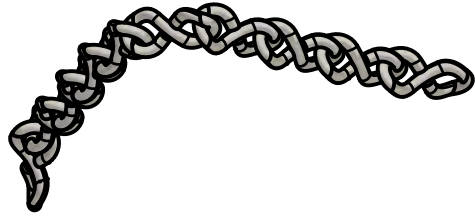


ITEM	ITEM QTY	PART NUMBER	DESCRIPTION
1	1	96-001-43	SPEAR BASE
2	1	96-002-43	SPEAR MID SECTION
3	1	96-003-43	SPEAR TIP
4	6	1811-0802	1/4-20 X 0.375 Hexagon Socket Set Screw - Cone Point

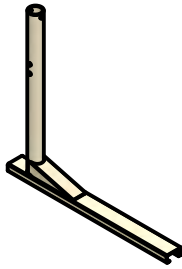
79-001-43
1/2 x 4 PUSH PIN



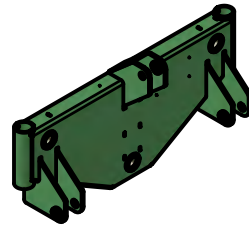
78-001-43
PIN RETENTION CHAIN



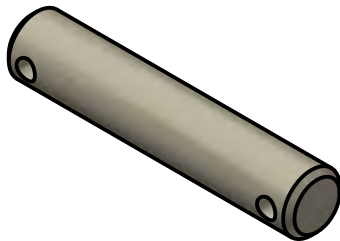
85-005-43
STAND LEG WELDMENT



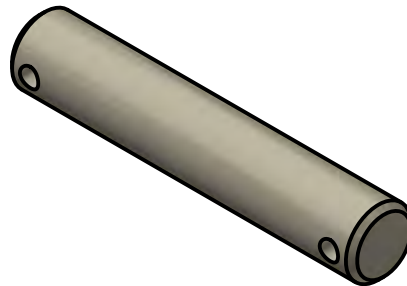
85-007-43
CARRIER WELDMENT



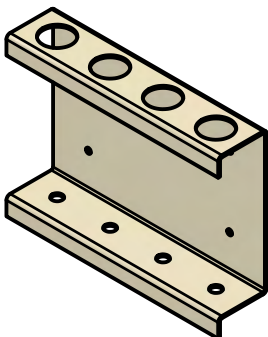
96-006-43
UPPER HITCH PIN



96-007-43
LOWER HITCH PIN



93-012-43
SPEAR TIP CARRIER



93-008-43
SHAFT CAP

